



QC
QUINTESSENZA
— CERAMICHE —



FÄRGBLOCK LUCIDO - MATT

Teklan edition x QC

QUINTESSENZA CERAMICHE S.r.l.

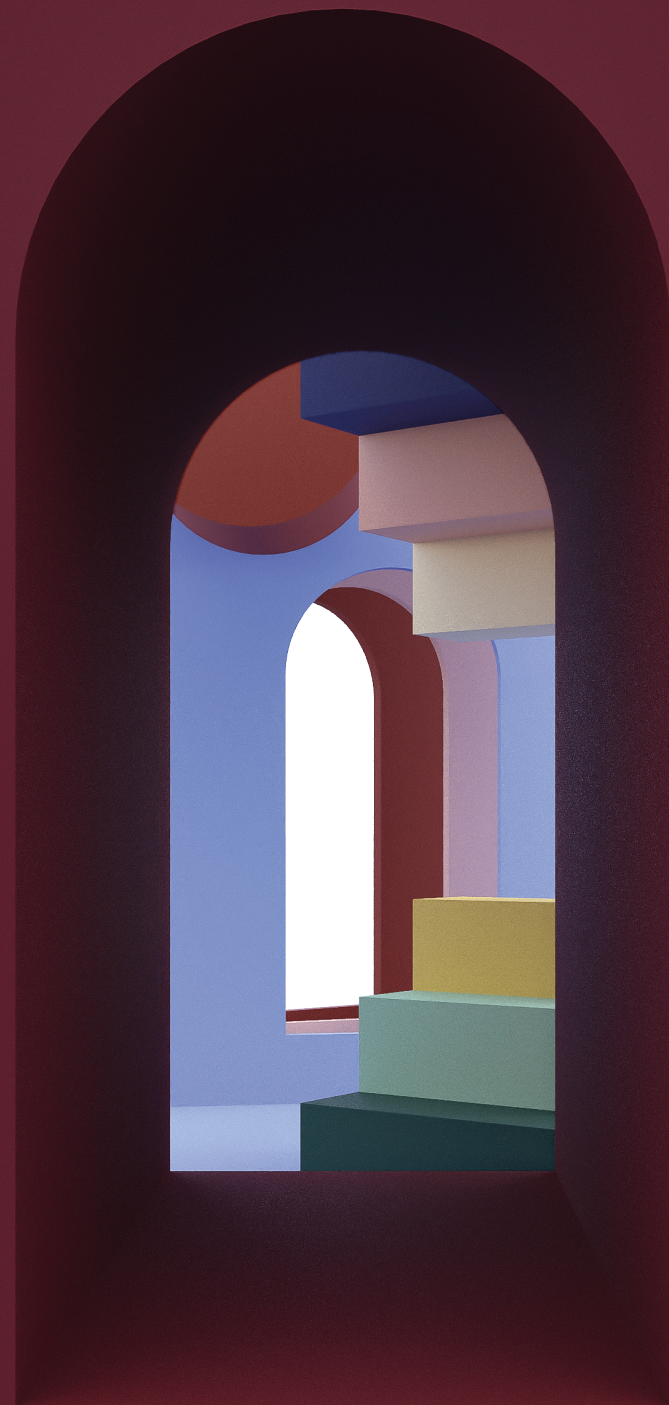
Via Ghiarola Nuova, 140
41042 Fiorano (MO) Italia
tel. +39 0536 91 01 31
info@quintessenzaceramiche.it
www.quintessenzaceramiche.it

FÄRGBLOCK
LUCIDO - MATT



FÄRGBLOCK

LUCIDO - MATT
Teklan edition x QC



Färgblock - colour block in English – is our new ceramic collection developed in collaboration with the designer and colorist Tekla Evelina Severin @teklan.

Tekla was asked to take part in this project due to her extraordinary ability with colour dynamics. In fact, her favourite quotation is: “Colour is never absolute, it is always relative, and it is what you put next to it that defines it’.

Färgblock - in inglese color block
- è la nuova collezione ceramica
sviluppata in collaborazione con
l'interior designer e colorist Tekla
Evelina Severin @teklan.

Tekla è stata coinvolta in questo
progetto per la sua straordinaria
propensione per le dinamiche del
colore, la sua citazione preferita:
“Il colore non è mai assoluto, è
sempre relativo, ed è ciò che ci
metti accanto che lo definisce”.

Färgblock - en anglais color block
- est la nouvelle collection céramique
développée en collaboration avec
l'architecte d'intérieur et coloriste
Tekla Evelina Severin @teklan.

Tekla a été impliquée dans ce projet
pour son extraordinaire passion
pour la dynamique de la couleur, sa
citation préférée : “La couleur n'est
jamais absolue, elle est toujours
relative, et c'est ce que vous y
mettez avec qui la définit”.

Färgblock was born from a desire to create a lively, versatile and highly appealing collection that offers maximum freedom of expression thanks to playful colour effects, contrasts and tone on tone harmonies. The inspiration for developing the colour palette comes, as always with Tekla, from multiple sources: images acquired during travels around the world; historic locations veiled in the positive nostalgia of bygone atmospheres; and natural landscapes where the light creates constantly changing colour nuances according to the time of day.

Färgblock nasce dalla volontà di creare una collezione vivace, versatile e di grande appeal, in grado di offrire massima libertà espressiva grazie a giochi di colori, contrasti o armonie tono su tono. L'ispirazione per lo sviluppo della palette cromatica viene, come sempre per Tekla, da molteplici fonti: immagini acquisite durante viaggi nel mondo; luoghi storici avvolti da atmosfere passate velate da una nostalgia positiva; paesaggi naturali dove la luce, a seconda dell'ora del giorno, crea sfumature cromatiche sempre mutevoli.

L'inspiration pour le développement de la palette de couleurs provient, comme toujours pour Tekla, de multiples sources: images acquises lors de voyages autour du monde; des lieux historiques entourés d'atmosphères passées voilées par une nostalgie positive; des paysages naturels où la lumière, selon l'heure de la journée, crée des nuances de couleurs toujours changeantes. Par ailleurs elle ajoute également que pour tous les êtres humains en général, il est très important de vivre dans un environnement coloré pour se sentir à l'aise et trouver son bien-être psycho-physique.





Gres Porcellanato
Porcelain stoneware

5X15CM
2"X6" 

8MM 

Monocromatico
Monochromatic

Färgblock è disponibile in gres porcellanato nel formato nominale 5x15cm. Il valore aggiunto della collezione è proprio il formato, scelto in quanto la misura dei due lati consente di creare pattern modulari.

Realizzata nella finitura lucida poi arricchita con la nuova finitura matt,

Färgblock, è capace di unire alle performance tecniche del grés, un impatto estetico forte e contemporaneo. Una collezione versatile che può essere inserita sia in contesti residenziali che commerciali, per applicazioni indoor e outdoor.

L'integrazione della finitura matt permette di ottenere una continuità di superficie tra pavimento e rivestimento. L'ampia gamma cromatica, composta da 13 colori lucidi e matt, consente di creare contrasti decisi o delicati accostamenti tono su tono conferendo maggiore movimento sulla parete.

L'alternanza delle due diverse finiture lucido/matt e l'utilizzo di stucchi colorati diventano moltiplicatori di possibilità, veri strumenti a disposizione di designer e progettisti.

Färgblock is available in a 5x15cm porcelain stoneware format. The collection's added value, in fact, is its format, which has been chosen as the lengths of its sides allow modular patterns to be created. Originally released in a gloss finish and later enhanced with a new matt finish, Färgblock combines the technical performance of stoneware with a powerful and contemporary style. It is a versatile collection that can be inserted in indoor and outdoor applications in both residential and retail contexts. The addition of its matt finish also allows a sense of surface continuity to be created between floor and wall tiles. Its wide colour range, consisting of 13 gloss and matt colours, offers decisive contrasts and delicate tone on tone juxtapositions that make walls come alive.

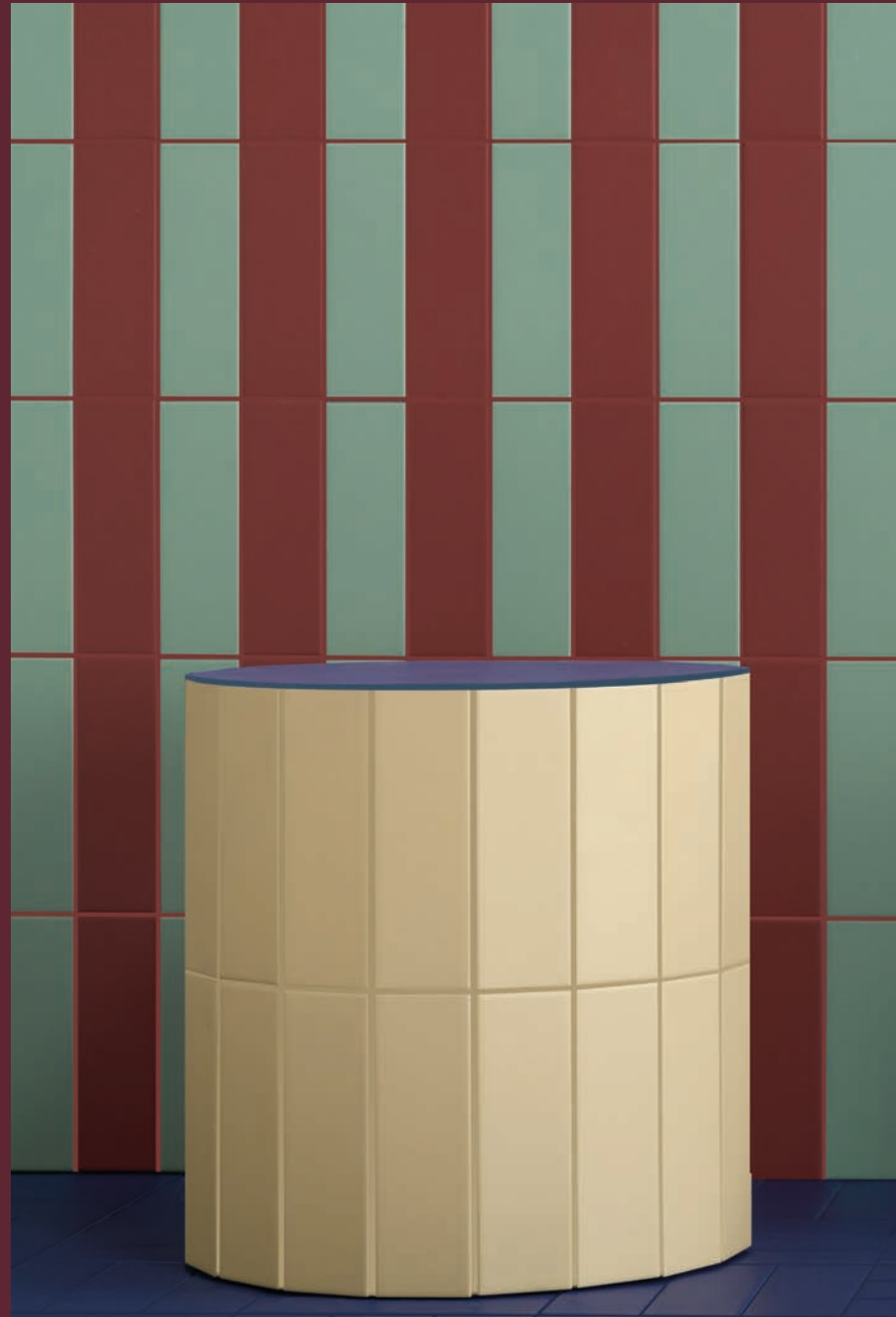
Alternating the two different, gloss and matt finishes and the use of coloured grouts are also important tools that offer planners and designers multiple creative possibilities.

Färgblock est disponible en grés cérame en format 5x15cm.

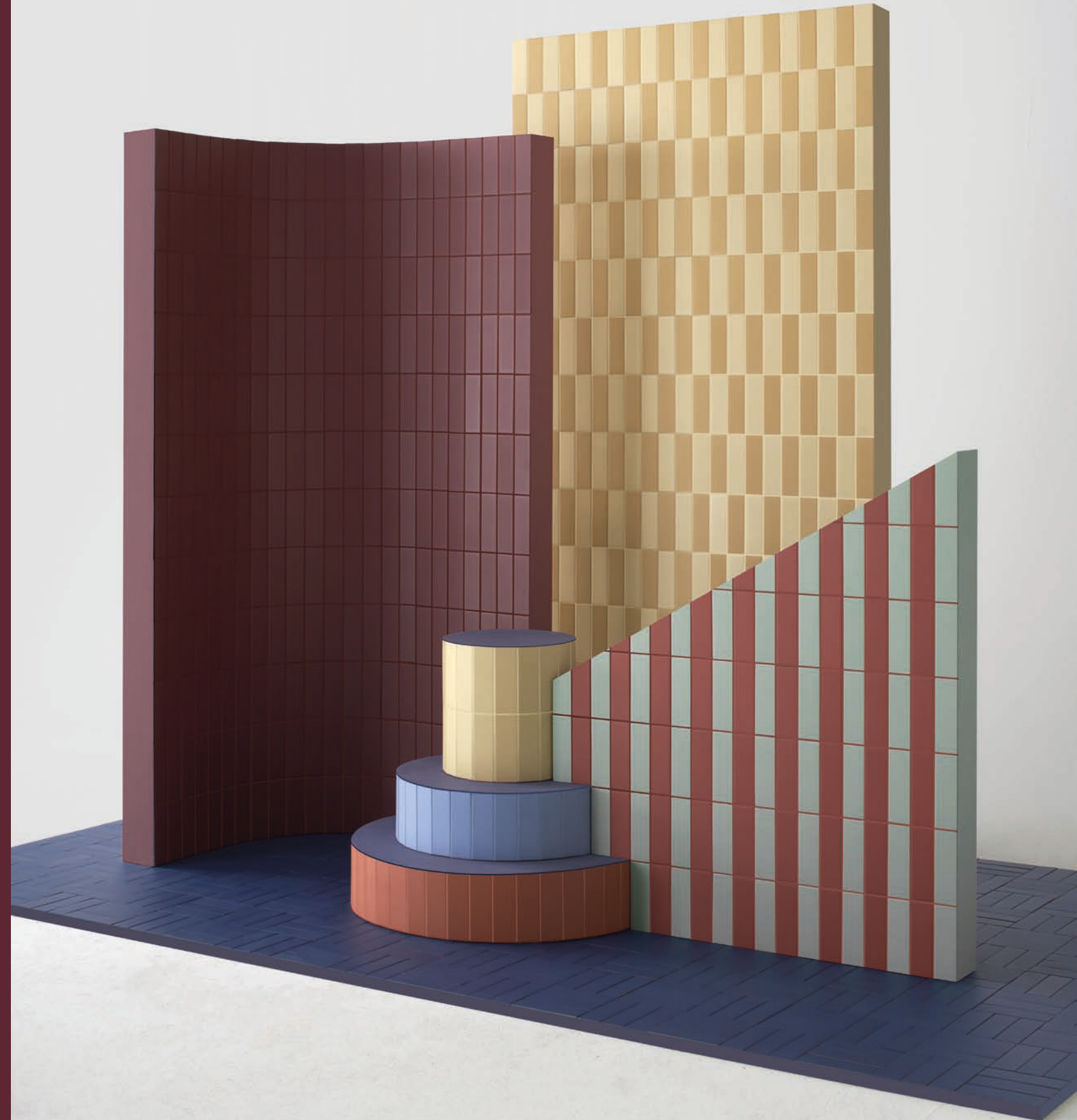
La valeur ajoutée de la collection est précisément le format, choisi car la taille des deux faces permet de créer des motifs modulables.

Fabriqué dans la finition brillante et mat, Färgblock est capable de combiner les performances techniques du grés cérame avec un impact esthétique fort et contemporain. Une collection polyvalente qui peut être insérée dans des contextes résidentiels et commerciaux, ou pour des applications intérieures et extérieures.

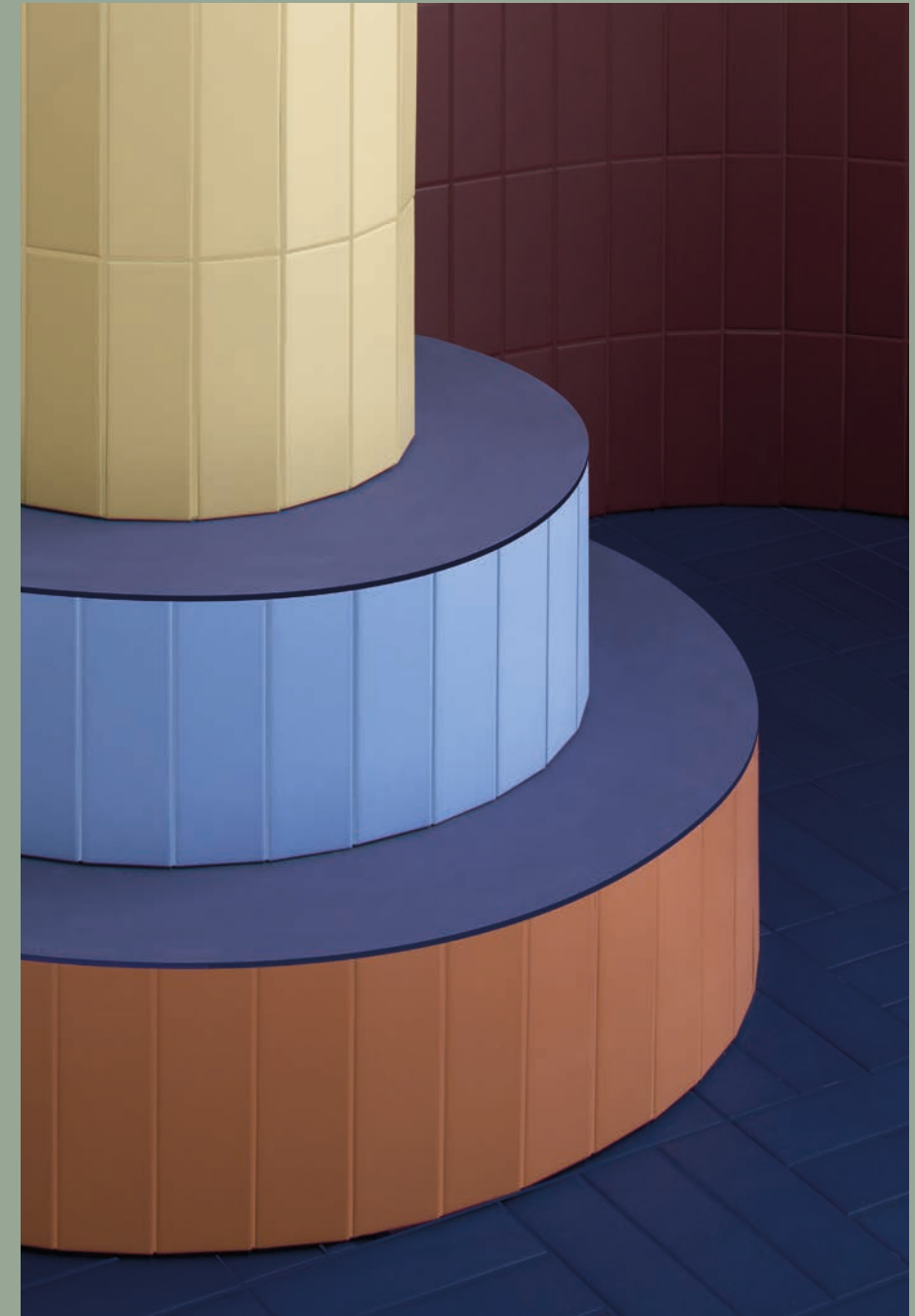
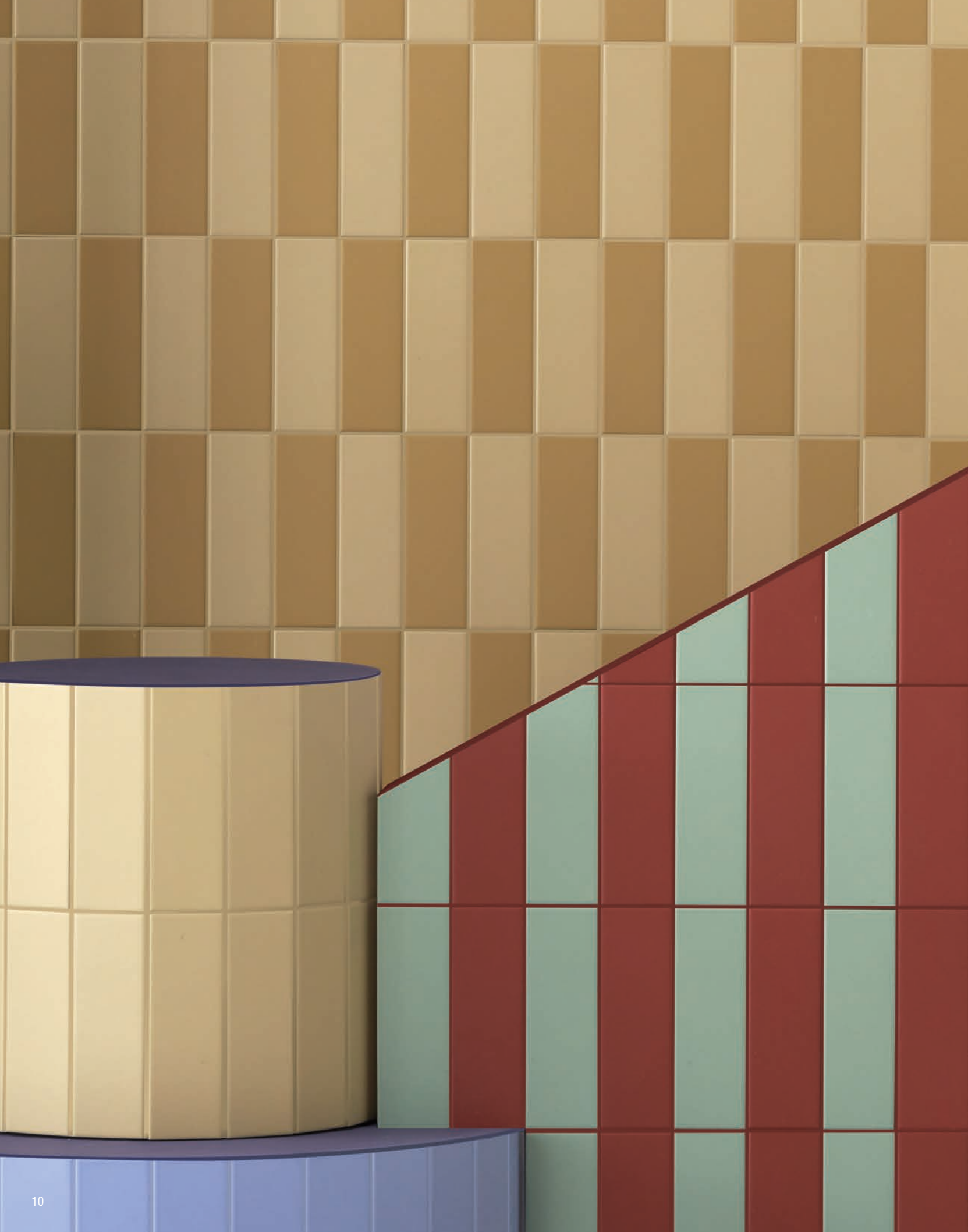
La large gamme chromatique, composée de 13 couleurs, permet de créer des contrastes décisifs ou de délicates combinaisons ton sur ton, dans lesquelles même les joints deviennent des multiplicateurs de possibilités, de véritables outils à la disposition des concepteurs, architectes et intérieur designers.



färgblock menta matt, champagne matt, oceano matt, cannella matt



färgblock borgogna matt, senape matt, champagne matt, cannella matt, menta matt,
cielo matt, arancio matt, oceano matt



färgblock borgogna matt, champagne matt, cielo matt,
arancio matt, oceano matt

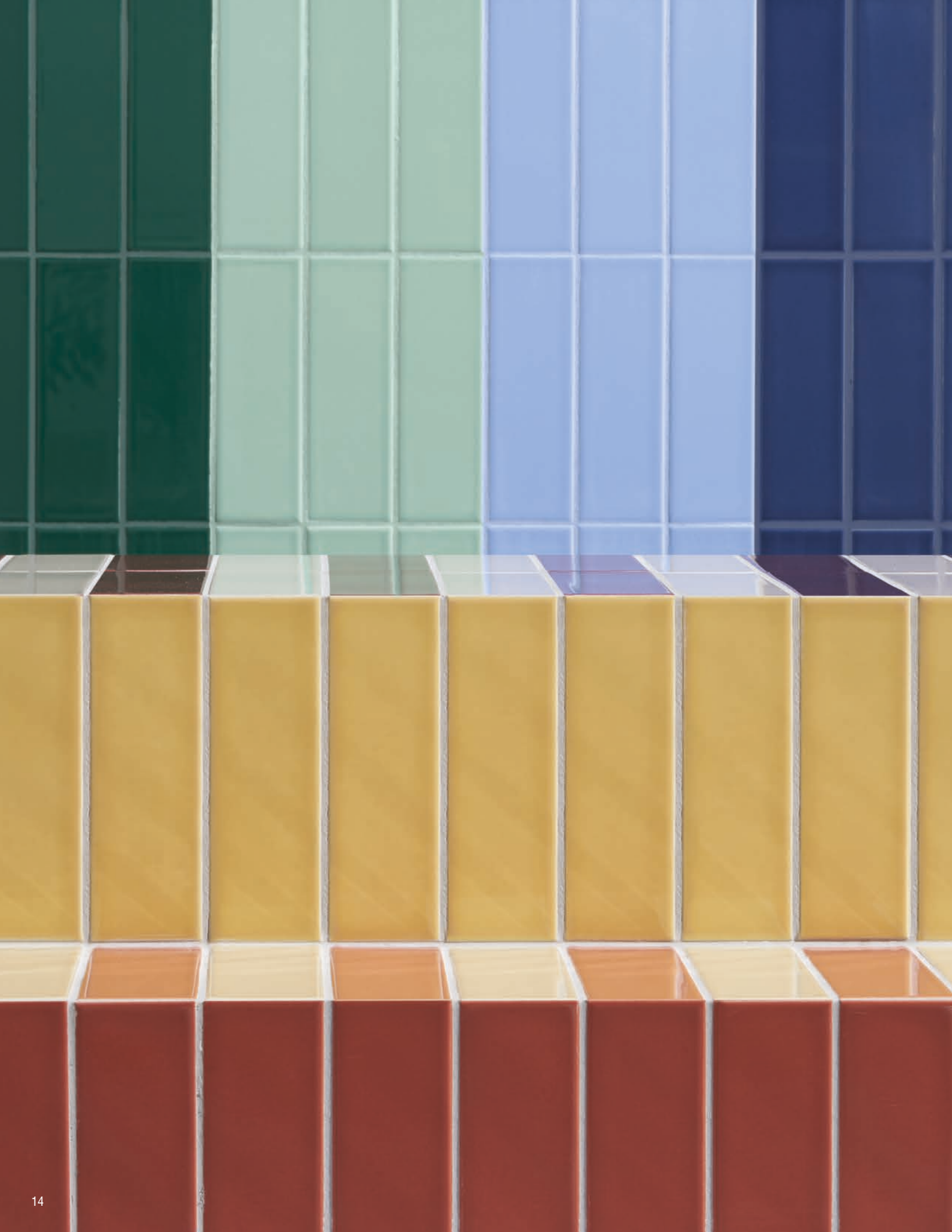
färgblock senape matt, champagne matt, cannella matt,
menta matt, cielo matt,



färgblock oceano lucido, cielo lucido, arancio lucido,
borgogna lucido, menta lucido, cannella lucido

färgblock senape lucido, champagne lucido, cannella lucido, oceano lucido, cielo lucido,
arancio lucido, cipria lucido, borgogna lucido, bianco lucido, cenere lucido, smeraldo lucido, menta lucido





färgblock senape lucido, champagne lucido, cannella lucido, oceano lucido, arancio lucido, cipria lucido, borgogna lucido, bianco lucido, cenere lucido

färgblock senape lucido, champagne lucido, cannella lucido, borgogna lucido, menta lucido, smeraldo lucido, cielo lucido, oceano lucido, arancio lucido



färgblock bianco matt, bianco lucido, senape matt, borgogna matt, champagne matt, oceano matt



färgblock bianco lucido, senape matt, champagne matt, oceano matt

färgblock bianco matt, senape matt, borgogna matt, champagne matt, oceano matt

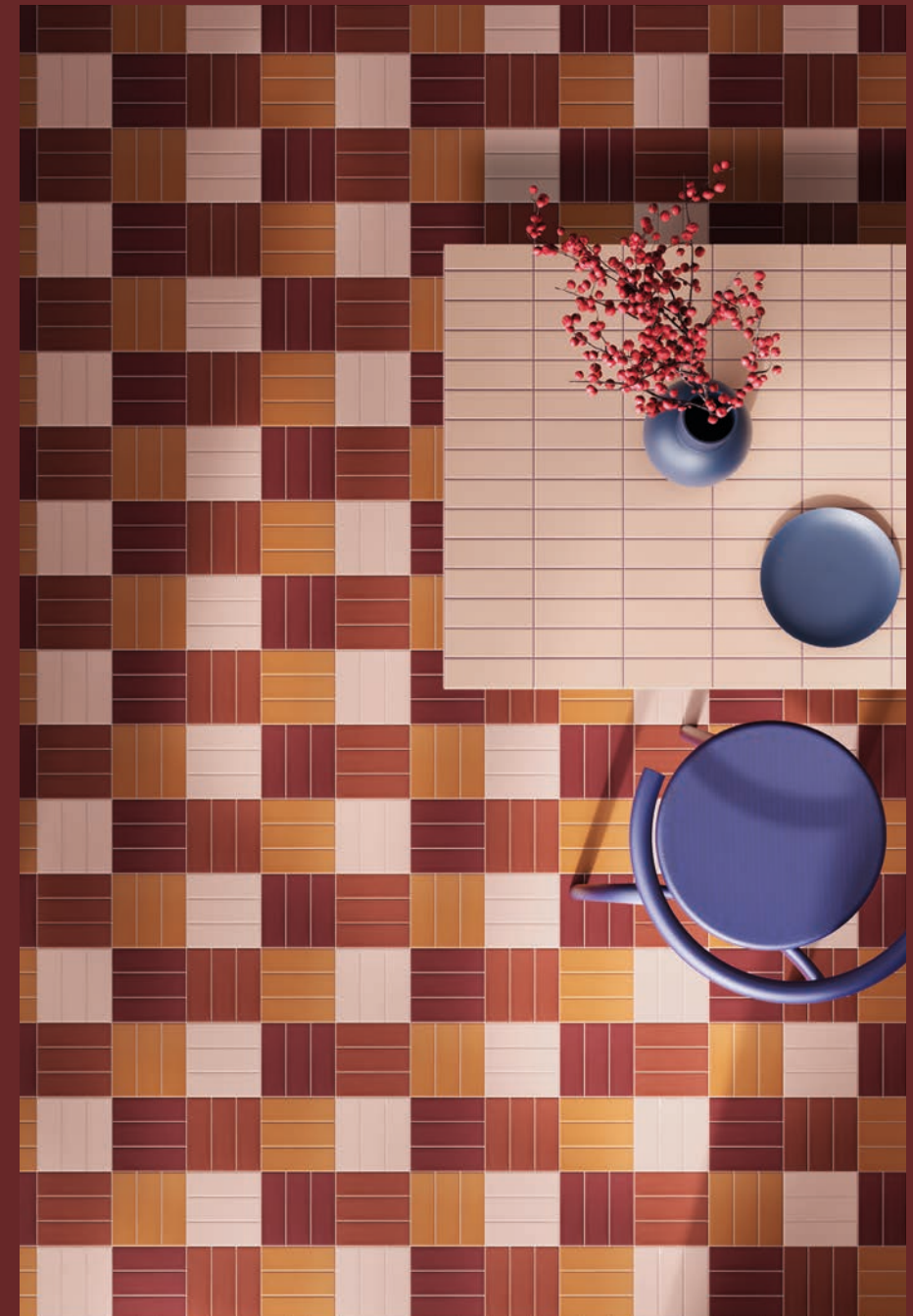


färgblock borgogna matt, senape matt, sabbia matt, cenere matt, cielo lucido



färgblock borgogna matt, senape matt, sabbia matt, cenere matt, cielo lucido

färgblock borgogna matt, senape matt, sabbia matt, cenere matt, cielo lucido



färgblock cannella matt, cipria matt,
arancio matt, borgogna matt

färgblock cielo matt, cielo lucido, cannella matt,
cipria matt, arancio matt, borgogna matt



färgblock menta lucido, smeraldo lucido, arancio lucido, cipria lucido,
bianco lucido, cannella lucido



färgblock menta lucido, smeraldo lucido, arancio lucido, cipria lucido,
bianco lucido, cannella lucido

färgblock arancio lucido, cipria lucido, bianco lucido, cannella lucido



färgblock smeraldo lucido, sabbia lucido, cenere lucido, bianco lucido, champagne lucido
confetti bianco.beige



färgblock smeraldo lucido, sabbia lucido, cenere lucido, champagne lucido
confetti bianco.beige

färgblock sabbia lucido, bianco lucido, cenere lucido
confetti bianco.beige, base Oltre cotto

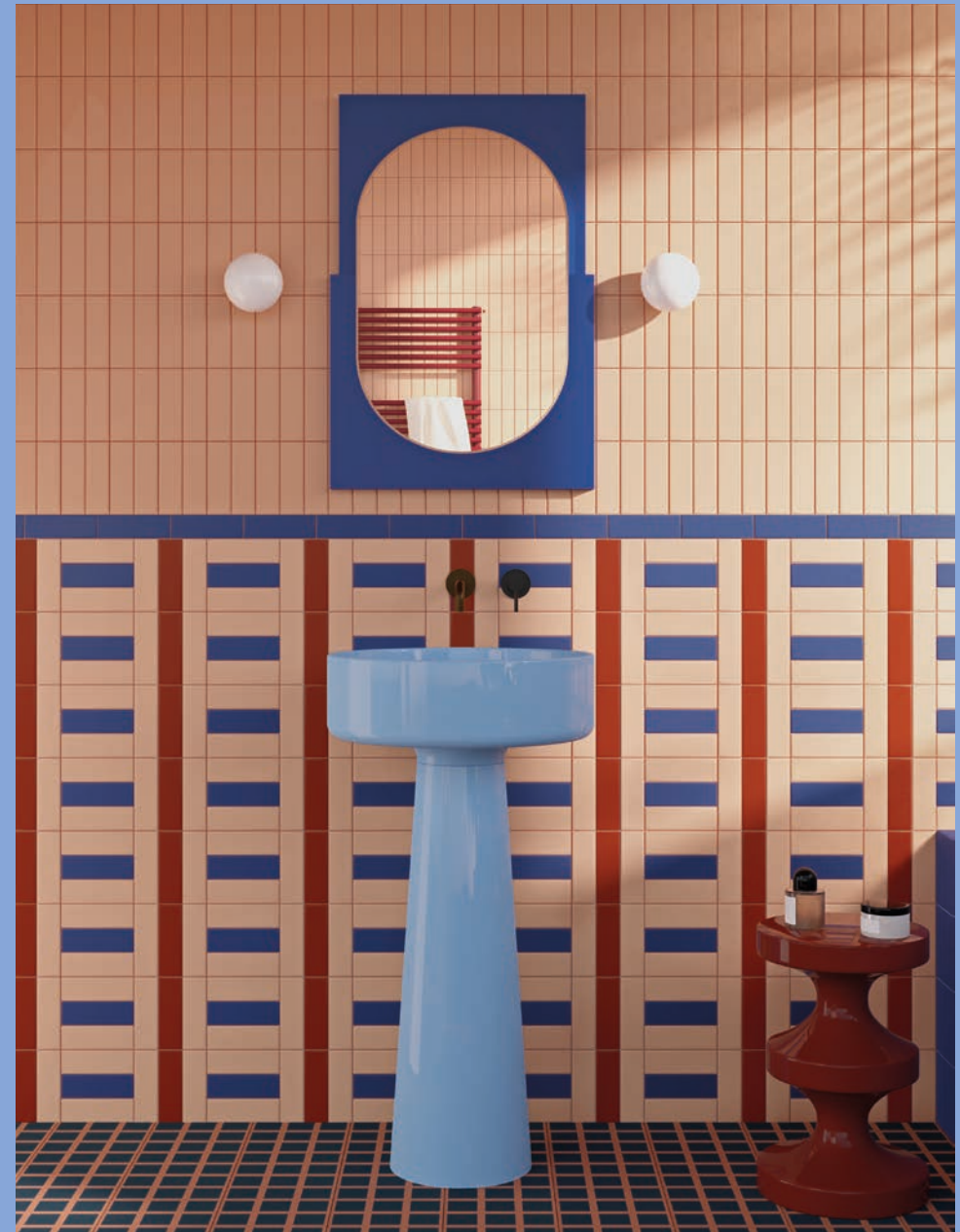
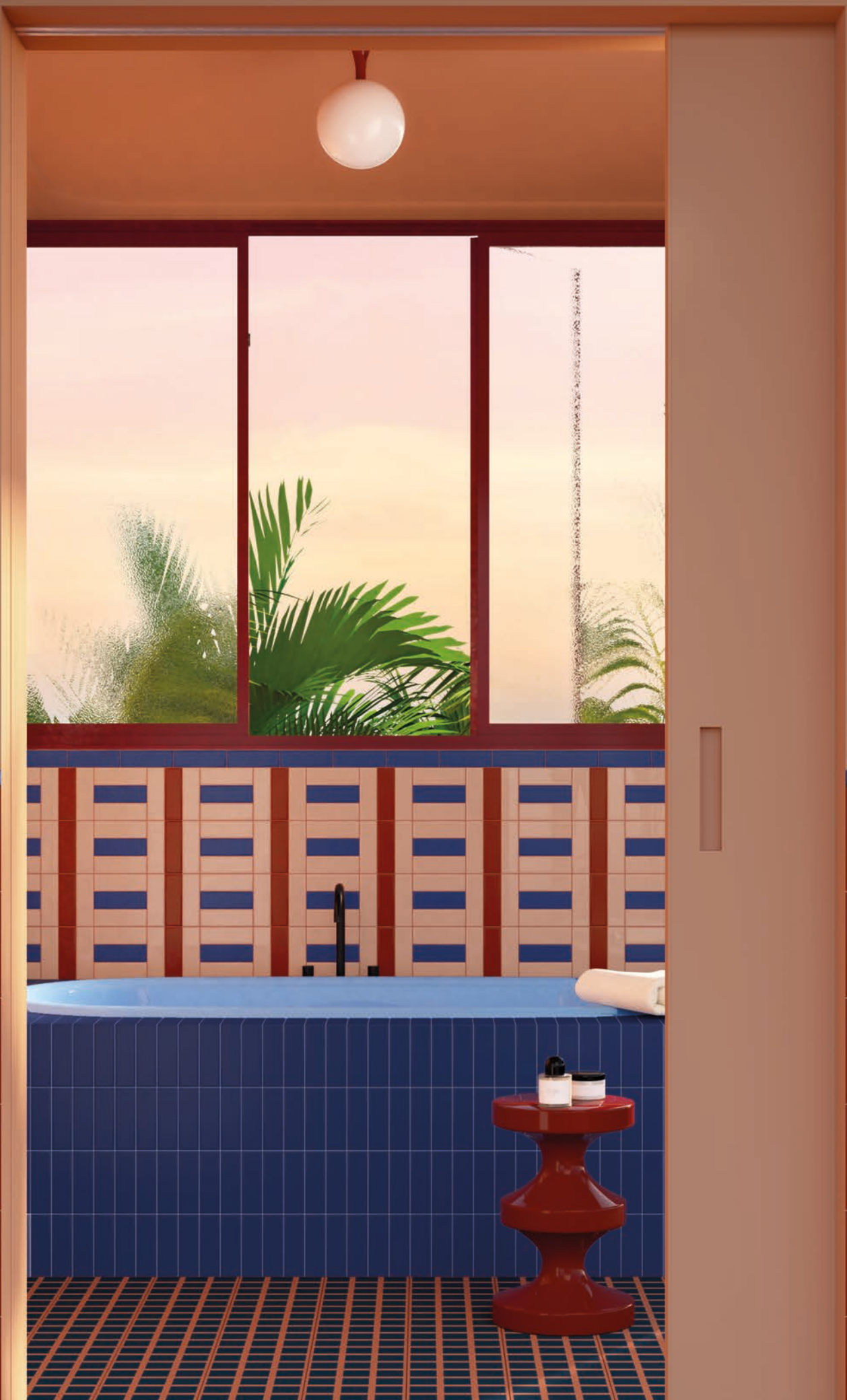


färgblokk smeraldo lucido, menta lucido, cielo lucido, oceano lucido, arancio lucido, senape lucido
oltre9 cotto.blu



färgblock smeraldo lucido, cielo lucido, arancio lucido,
oltre9 cotto.bl

färgblock smeraldo lucido, menta lucido, cielo lucido, oceano lucido, arancio lucido,
oltre9 cotto.bl



färgblock cannella lucido, cipria lucido, oceano lucido,
oltre9 cotto.blu

färgblock cannella lucido, cipria lucido, oceano lucido,
oltre9 cotto.blu



färgblock menta lucido, cipria lucido

färgblock cielo lucido, menta lucido, borgogna lucido, cipria lucido



färgblock menta lucido, cielo lucido

FÄRGBLOCK

Teklan edition x QC

menta
luci do

menta
matt

smeral do
luci do

smeral do
matt

cielo
luci do

cielo
matt

oceano
luci do

oceano
matt

champagne
luci do

champagne
matt

senape
luci do

senape
matt

arancio
luci do

arancio
matt

cipria
luci do

cipria
matt

cannella
luci do

cannella
matt

/ COLOURS

COLORI

cenere
luci do

cenere
matt

sabbia
luci do

sabbia
matt

bi anco
luci do

bi anco
matt

/ NEUTRAL COLOURS

COLORI
NEUTRI

CIELO

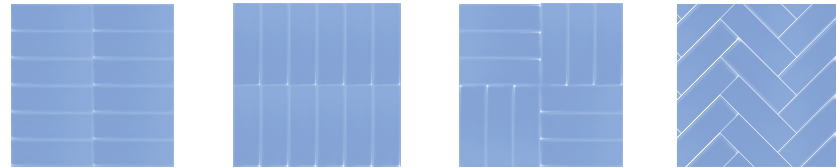
SCHEMI DI POSA LAYING SCHEME

Gres porcellanato
Porcelain stoneware

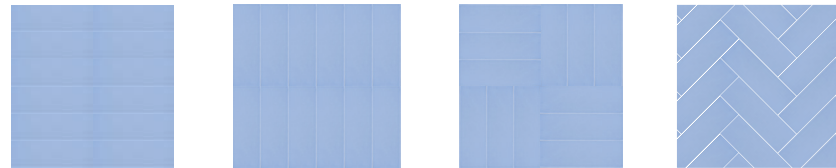
5X15CM
2"X6"

8MM
Monocromatic
Monochromatic

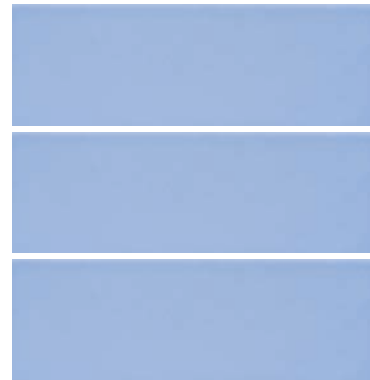
POSE LAYING SCHEME



POSE LAYING SCHEME



CIELO LUCIDO FGB104L ■09



CIELO MATT FGB117M ■09

STUCCHI CONSIGLIATI SUGGESTED GROUTS

Kerakoll

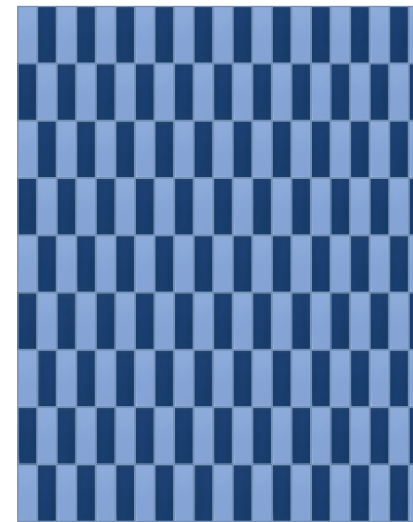
Mapei

Laticrete

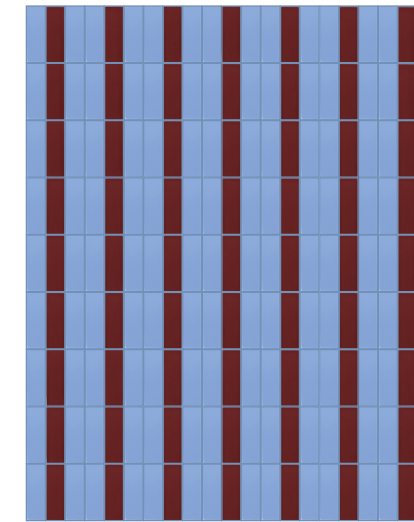
TONO SU TONO
TONE ON TONE



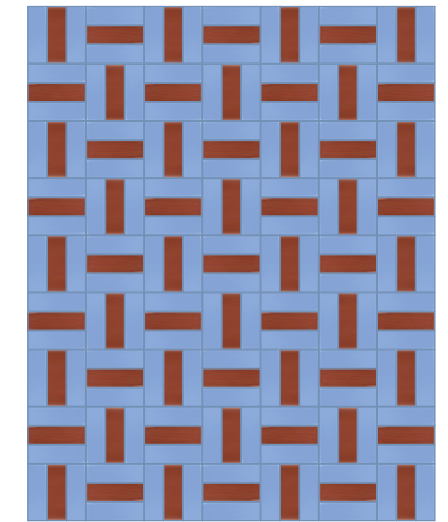
A CONTRASTO
CONTRASTING



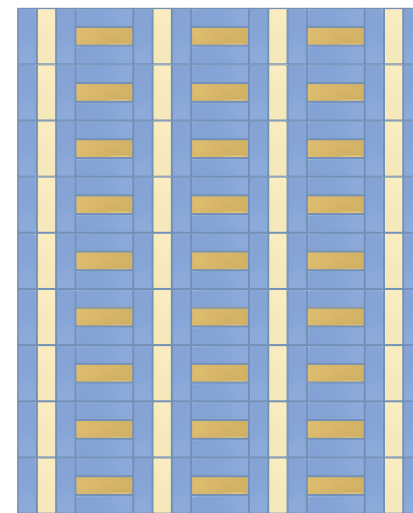
CERULEAN 168
50% CIELO | 50% OCEANO



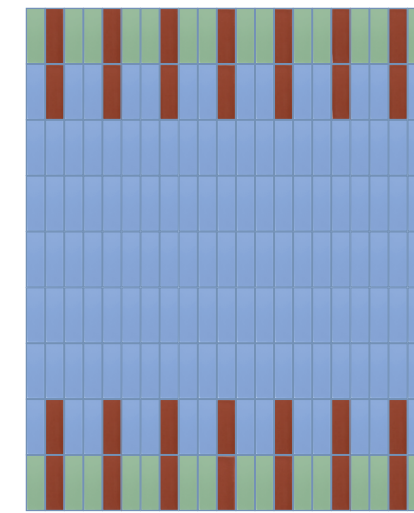
CERULEAN 168
66% CIELO | 34% BORGOGNA



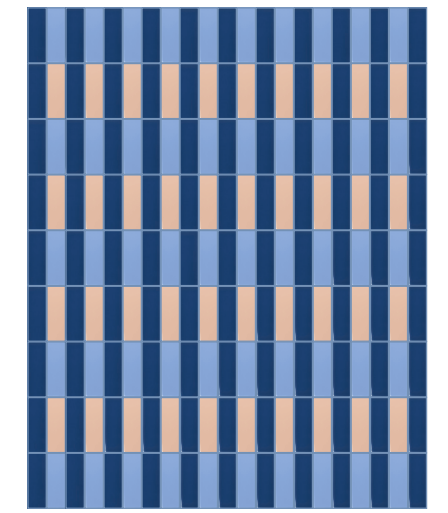
CERULEAN 168
66% CIELO | 34% CANNELLA



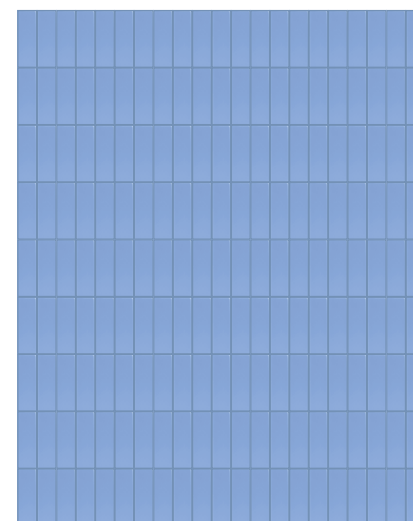
CERULEAN 168
66% CIELO | 19% CHAMPAGNE | 15% SENAPE



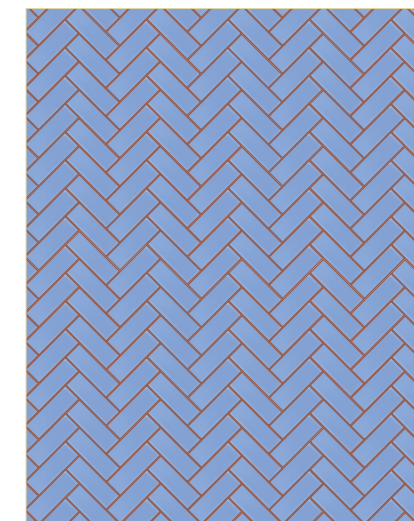
CERULEAN 168
70% CIELO | 15% MENTA | 15% CANNELLA



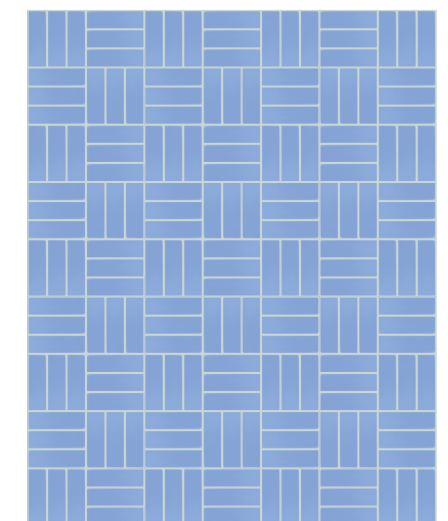
CERULEAN 168
27% CIELO | 20% CIPRIA | 53% OCEANO



CERULEAN 168
100% CIELO



TERRA COTTA 143
100% CIELO



FUGABELLA COLOR 18
100% CIELO

OCEANO

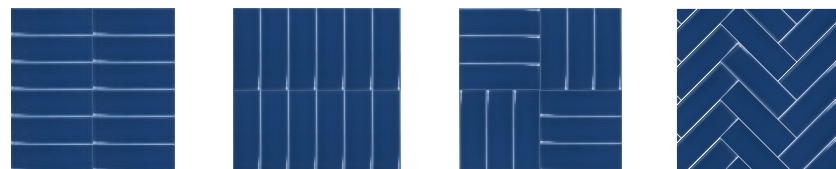
SCHEMI DI POSA LAYING SCHEME

Gres porcellanato
Porcelain stoneware

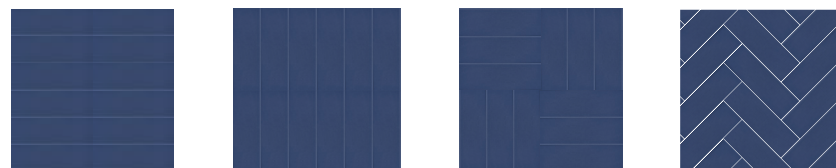
5X15CM
2"X6"

8MM
Monocromatic
Monochromatic

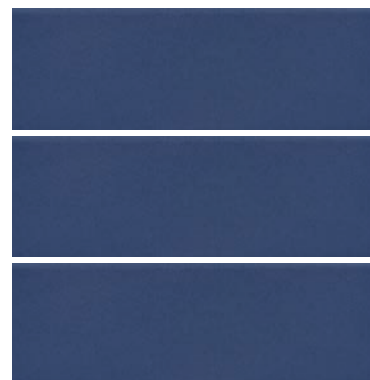
POSE LAYING SCHEME



POSE LAYING SCHEME



OCEANO LUCIDO FGB105L ■10



OCEANO MATT FGB117M ■10

STUCCHI CONSIGLIATI SUGGESTED GROUTS

Kerakoll

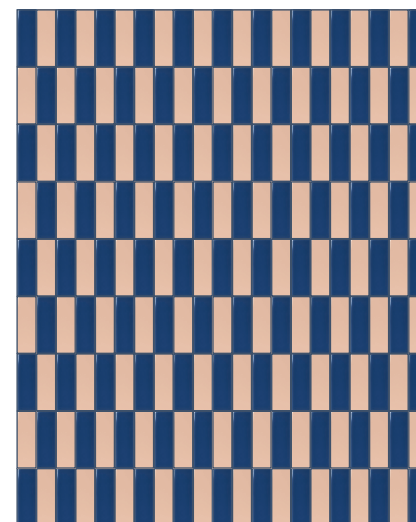
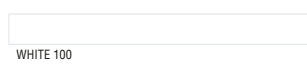
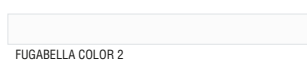
Mapei

Laticrete

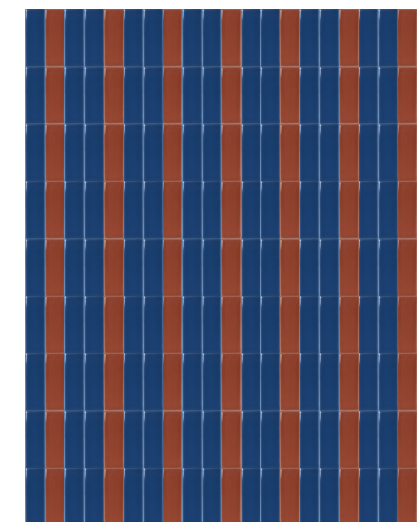
TONO SU TONO
TONE ON TONE



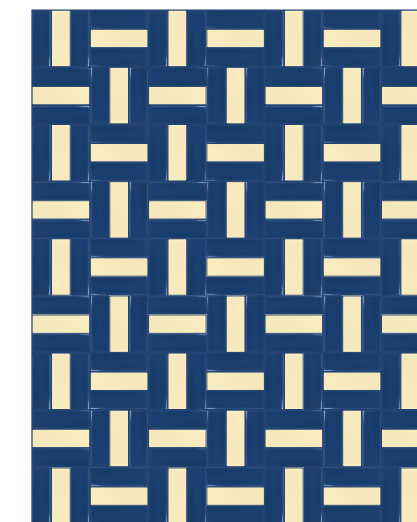
A CONTRASTO
CONTRASTING



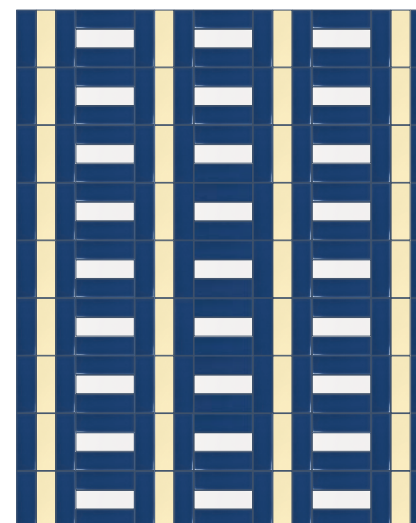
FUGABELLA COLOR 16
50% OCEANO | 50% CIPRIA



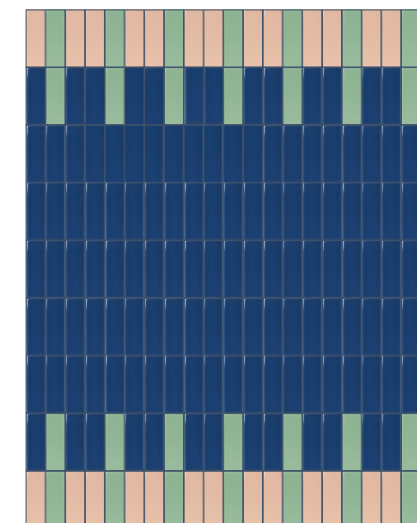
FUGABELLA COLOR 16
66% OCEANO | 34% CANNELLA



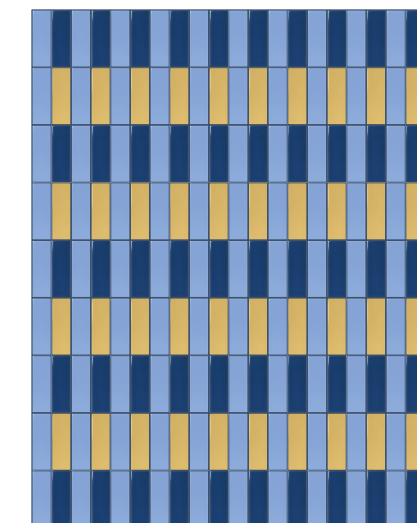
FUGABELLA COLOR 16
66% OCEANO | 34% CHAMPAGNE



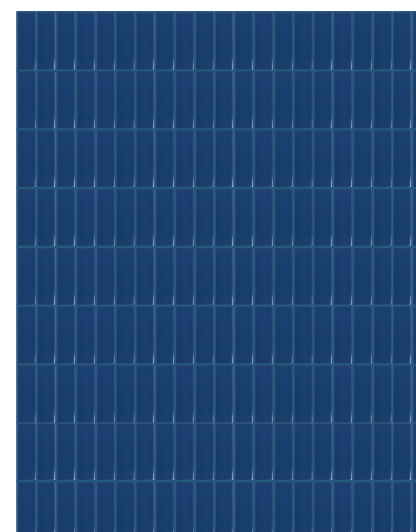
FUGABELLA COLOR 16
66% OCEANO | 19% CHAMPAGNE | 15% BIANCO



FUGABELLA COLOR 16
70% OCEANO | 15% MENTA | 15% CIPRIA



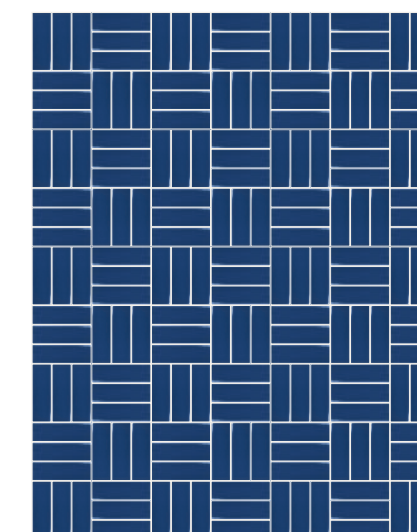
FUGABELLA COLOR 16
27% OCEANO | 20% SENAPE | 53% CIELO



FUGABELLA COLOR 16
100% OCEANO



FUGABELLA COLOR 30
100% OCEANO



FUGABELLA COLOR 2
100% OCEANO

MENTA

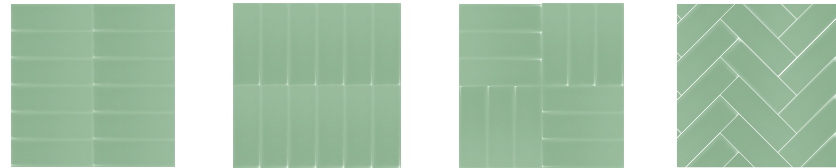
SCHEMI DI POSA LAYING SCHEME

Gres porcellanato
Porcelain stoneware

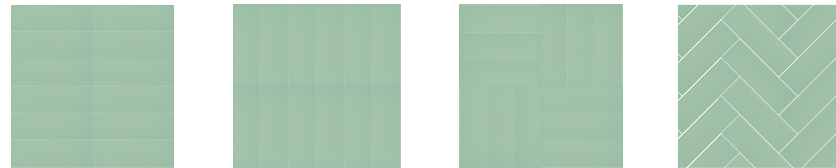
5X15CM
2"X6"

8MM
Monocromatic
Monochromatic

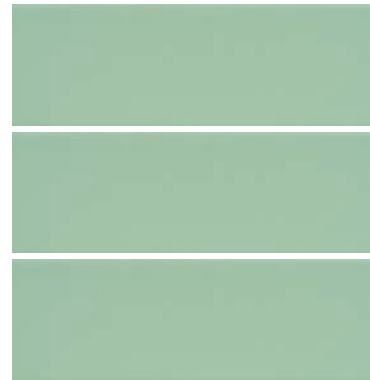
POSE LAYING SCHEME



POSE LAYING SCHEME



MENTA LUCIDO FGB106L ■09



MENTA MATT FGB119M ■09

STUCCHI CONSIGLIATI SUGGESTED GROUTS

Kerakoll

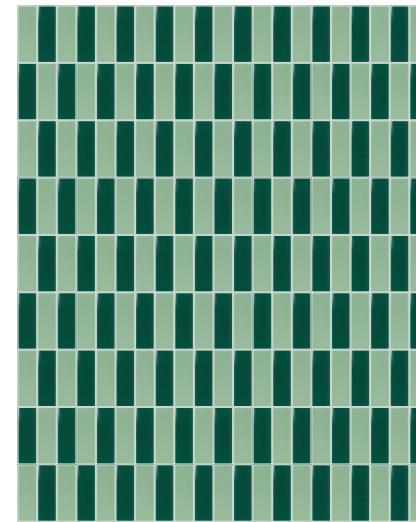
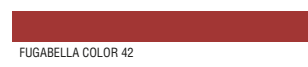
Mapei

Laticrete

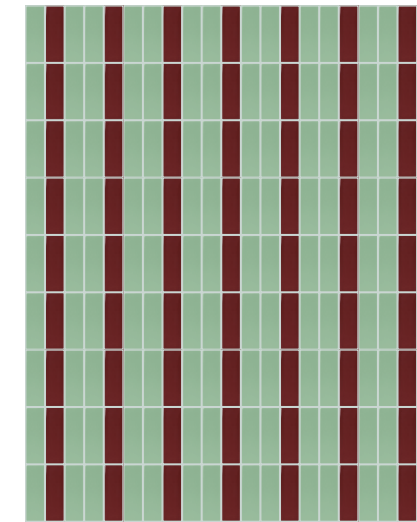
TONO SU TONO
TONE ON TONE



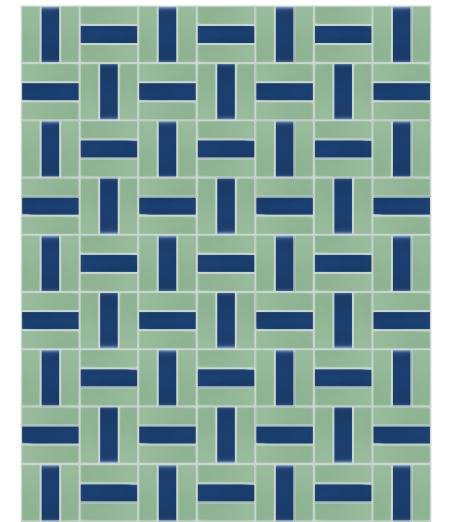
A CONTRASTO
CONTRASTING



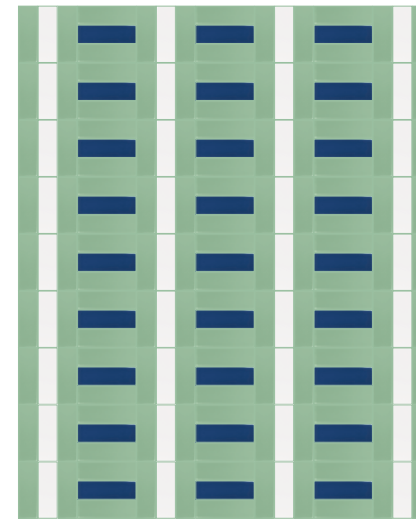
SEA GLASS 50
50% MENTA | 50% SMERALDO



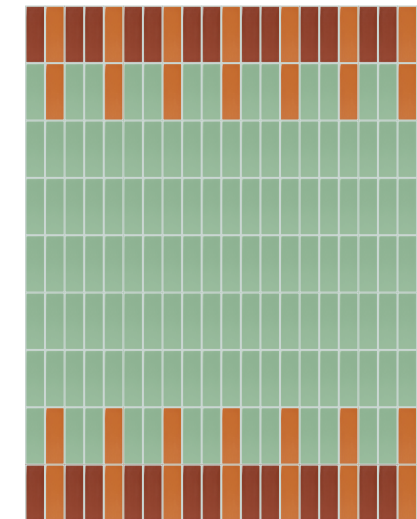
SEA GLASS 50
66% MENTA | 34% BORGOGNA



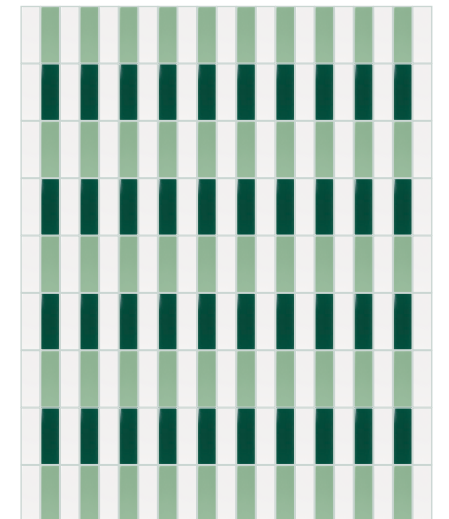
SEA GLASS 50
66% MENTA | 34% OCEANO



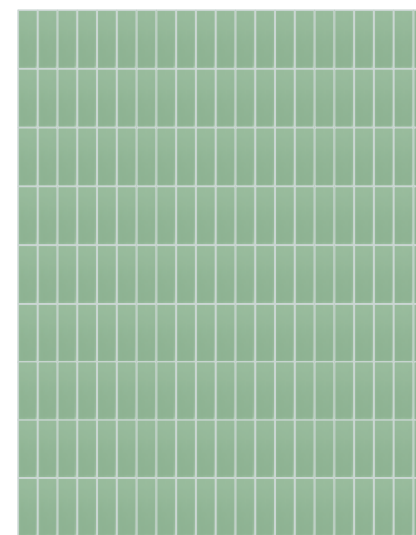
SEA GLASS 50
66% MENTA | 19% BIANCO | 15% OCEANO



SEA GLASS 50
70% MENTA | 15% ARANCIO | 15% CANNELLA



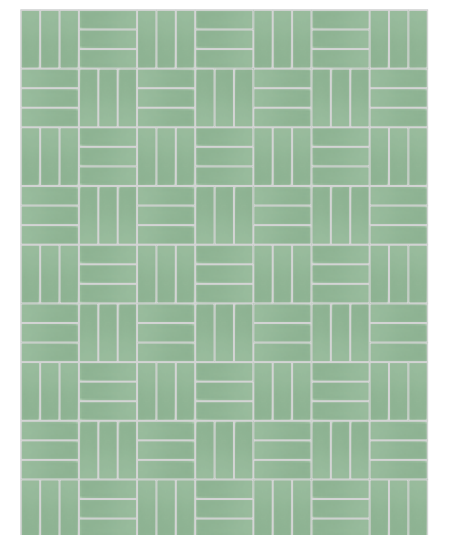
SEA GLASS 50
27% MENTA | 20% SMERALDO | 53% BIANCO



SEA GLASS 50
100% MENTA



FUGABELLA COLOR 42
100% MENTA



MANHATTAN 2000 110
100% MENTA

SMERALDO

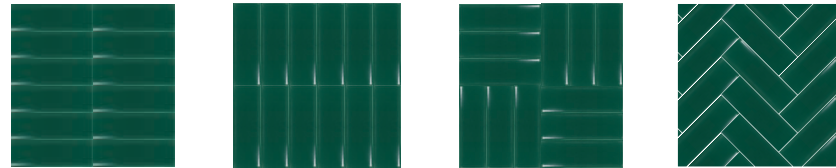
SCHEMI DI POSA LAYING SCHEME

Gres porcellanato
Porcelain stoneware

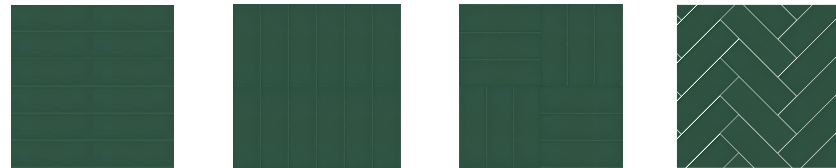
5X15CM
2"X6"

8MM
Monocromatic
Monochromatic

POSE LAYING SCHEME



POSE LAYING SCHEME



SMERALDO LUCIDO FGB107L ■10



SMERALDO MATT FGB120M ■10

STUCCHI CONSIGLIATI SUGGESTED GROUTS

Kerakoll

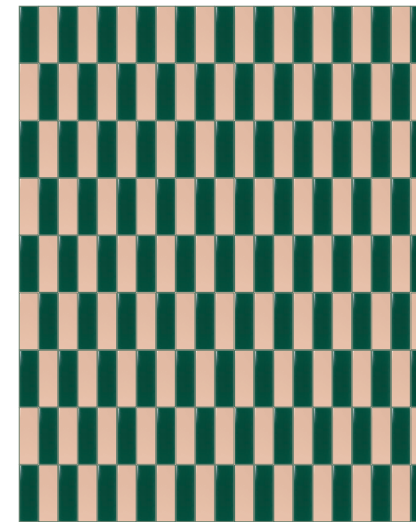
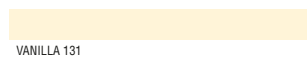
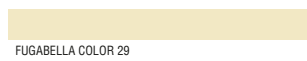
Mapei

Laticrete

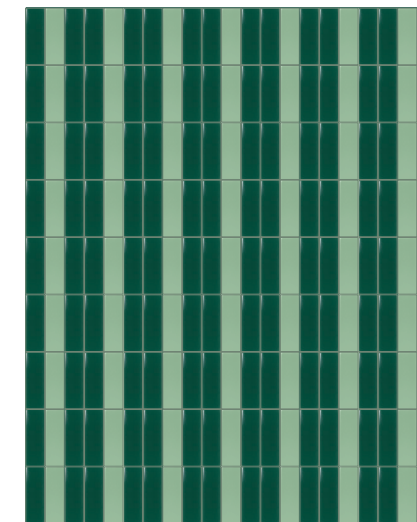
TONO SU TONO
TONE ON TONE



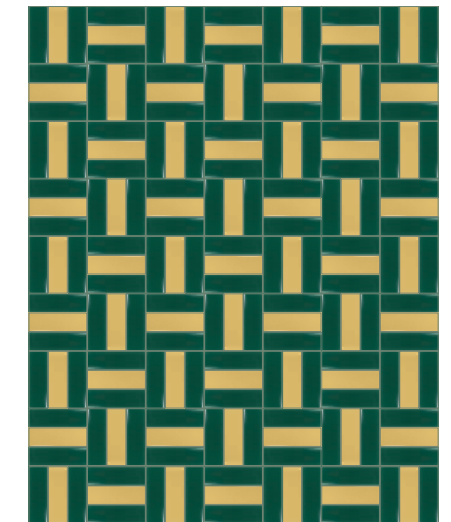
A CONTRASTO
CONTRASTING



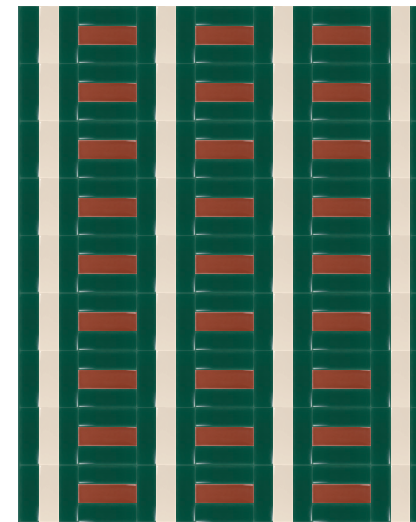
FUGABELLA COLOR 19
50% SMERALDO | 50% CIPRIA



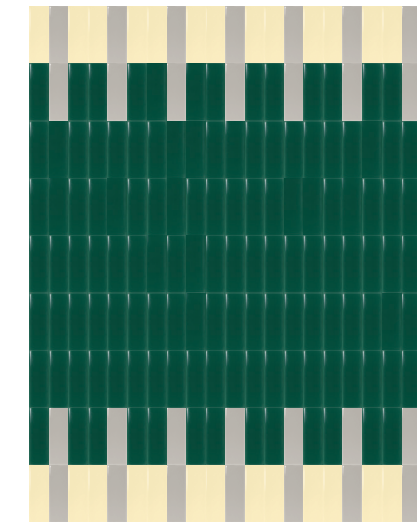
FUGABELLA COLOR 19
66% SMERALDO | 34% MENTA



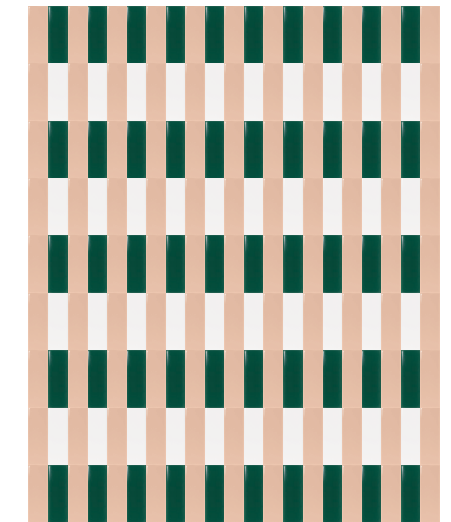
FUGABELLA COLOR 19
66% SMERALDO | 34% SENAPE



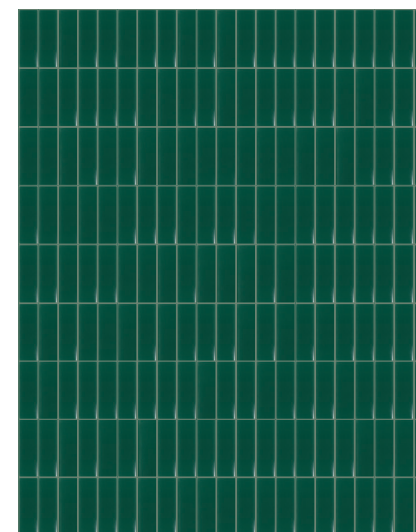
FUGABELLA COLOR 19
66% SMERALDO | 19% SABBIA | 15% CANNELLA



FUGABELLA COLOR 19
70% SMERALDO | 15% CHAMPAGNE | 15% CENERE



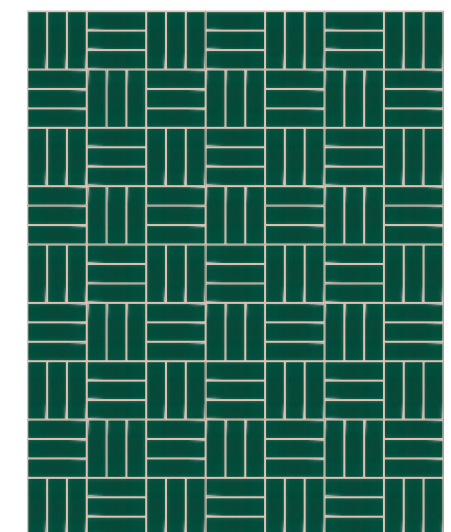
FUGABELLA COLOR 19
27% SMERALDO | 20% BIANCO | 53% CIPRIA



FUGABELLA COLOR 19
100% SMERALDO



KASHMIRE 41
100% SMERALDO



FUGABELLA COLOR 39
100% SMERALDO

CIPRIA

SCHEMI DI POSA LAYING SCHEME

Gres porcellanato
Porcelain stoneware

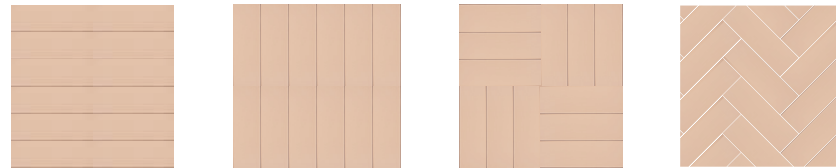
5X15CM
2"X6"

8MM
Monocromatic
Monochromatic

POSE LAYING SCHEME



POSE LAYING SCHEME



CIPRIA LUCIDO FGB108L ■09



CIPRIA MATT FGB121M ■09

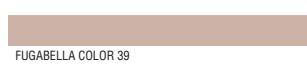
STUCCHI CONSIGLIATI SUGGESTED GROUTS

Kerakoll

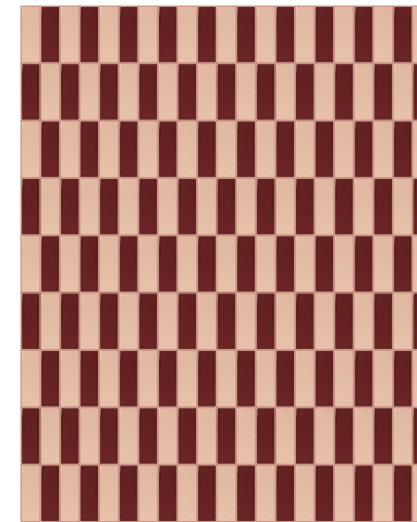
Mapei

Laticrete

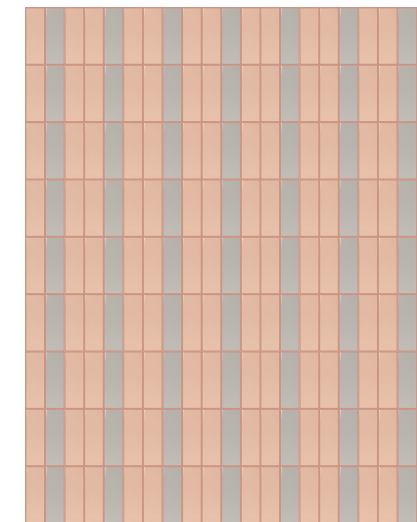
TONO SU TONO
TONE ON TONE



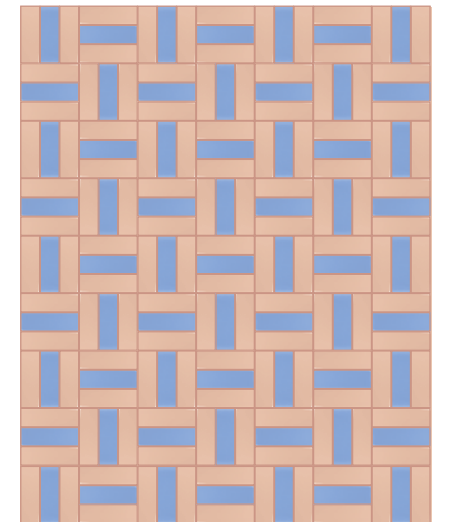
A CONTRASTO
CONTRASTING



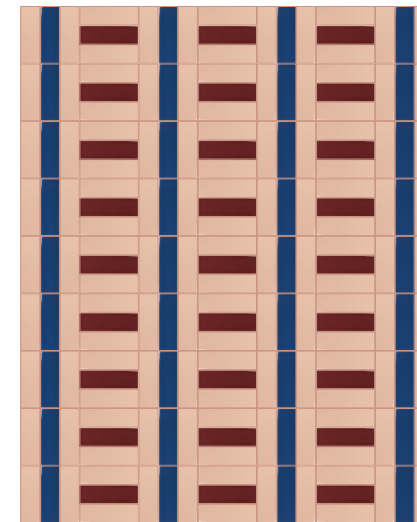
SALTILLO 92
50% CIPRIA | 50% BORGOGNA



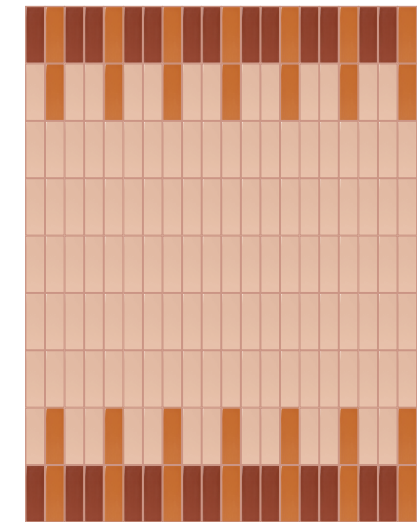
SALTILLO 92
66% CIPRIA | 34% CENERE



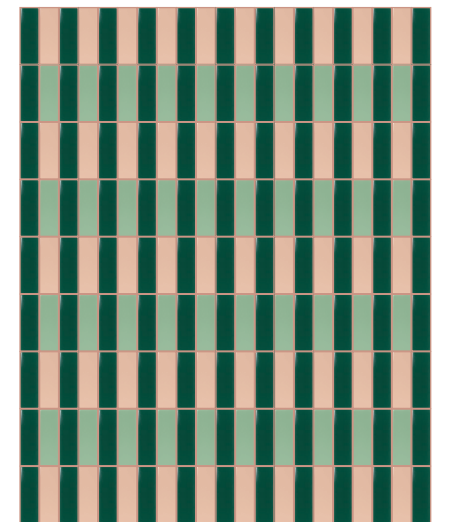
SALTILLO 92
66% CIPRIA | 34% CIELO



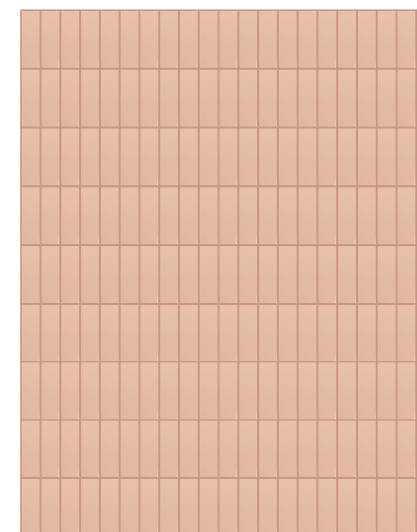
SALTILLO 92
66% CIPRIA | 19% OCEANO | 15% BORGOGNA



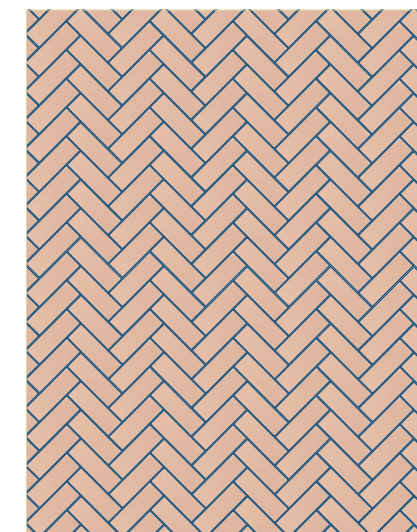
SALTILLO 92
70% CIPRIA | 15% ARANCIO | 15% CANNELLA



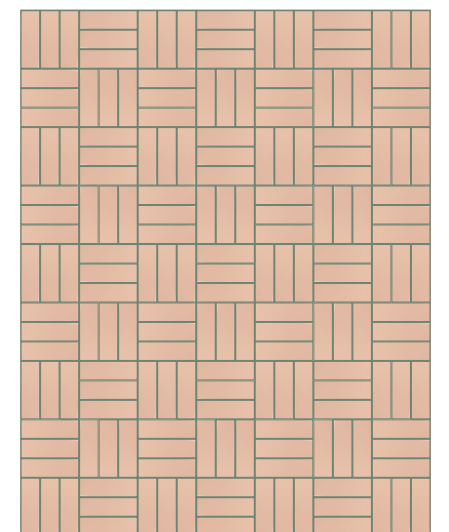
SALTILLO 92
27% CIPRIA | 20% MENTA | 53% SMERALDO



SALTILLO 92
100% CIPRIA



CHAMBRAY 37
100% CIPRIA



FUGABELLA COLOR 19
100% CIPRIA

ARANCIO

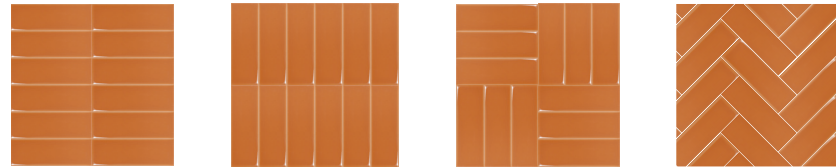
SCHEMI DI POSA LAYING SCHEME

Gres porcellanato
Porcelain stoneware

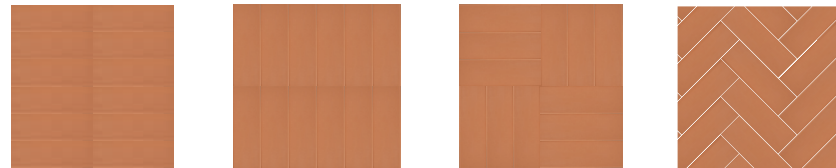
5X15CM
2"X6"

8MM
Monocromatic
Monochromatic

POSE LAYING SCHEME



POSE LAYING SCHEME



ARANCIO LUCIDO FGB109L ■09



ARANCIO MATT FGB122M ■09

STUCCHI CONSIGLIATI SUGGESTED GROUTS

Kerakoll

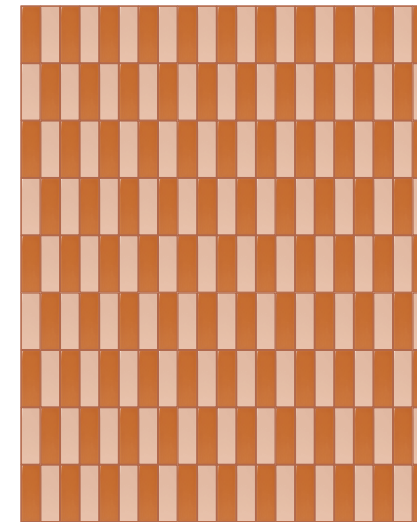
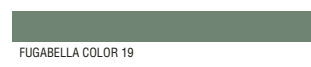
Mapei

Laticrete

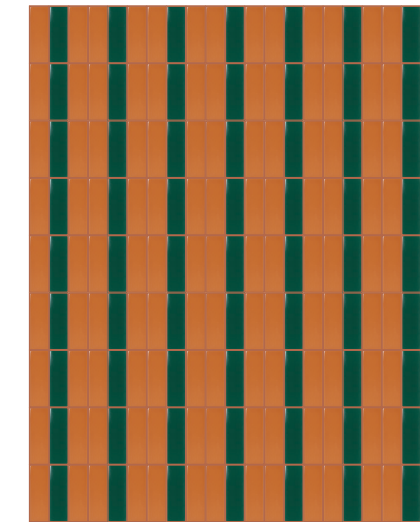
TONO SU TONO
TONE ON TONE



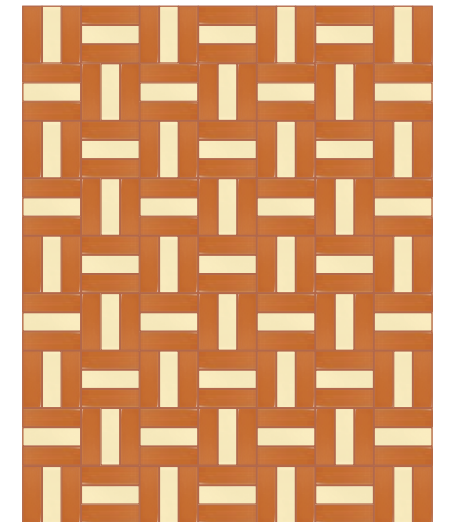
A CONTRASTO
CONTRASTING



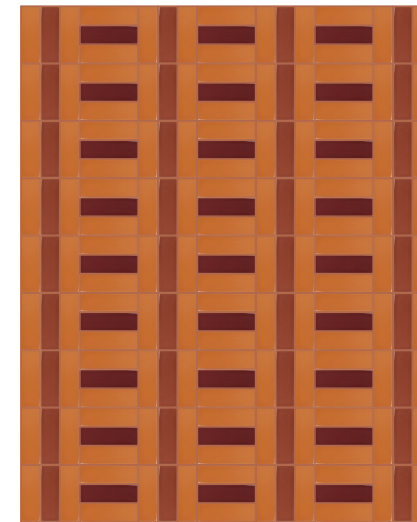
CINNAMON 47
50% ARANCIO | 50% CIPRIA



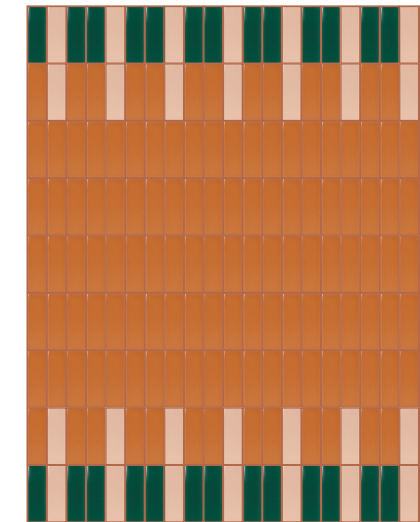
CINNAMON 47
66% ARANCIO | 34% SMERALDO



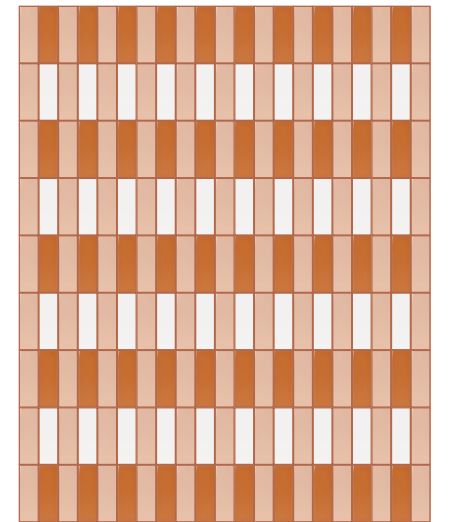
CINNAMON 47
66% ARANCIO | 34% CHAMPAGNE



CINNAMON 47
66% ARANCIO | 19% CANNELLA | 15% BORGOGNA



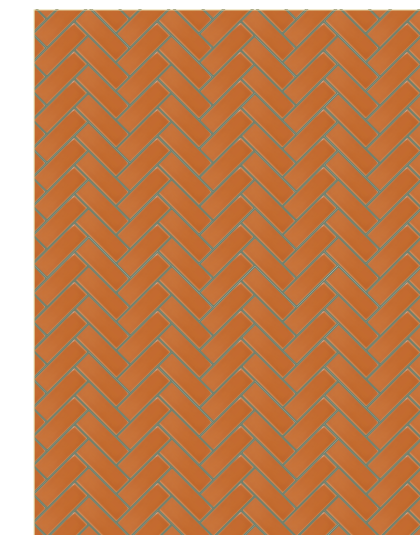
CINNAMON 47
70% ARANCIO | 15% CIPRIA | 15% SMERALDO



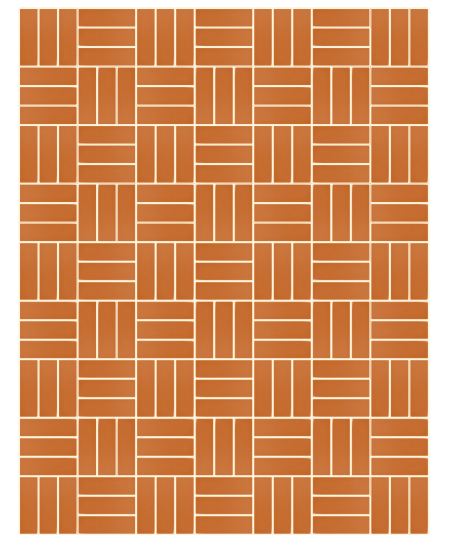
CINNAMON 47
27% ARANCIO | 20% BIANCO | 53% CIPRIA



CINNAMON 47
100% ARANCIO



BOSTON FERN 33
100% ARANCIO



VANILLA 131
100% ARANCIO

CANNELLA

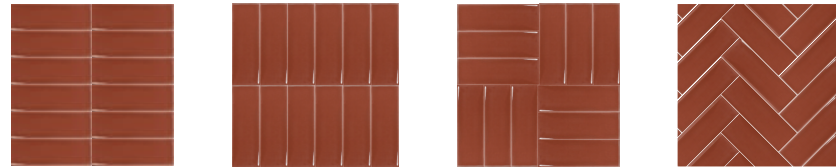
SCHEMI DI POSA LAYING SCHEME

Gres porcellanato
Porcelain stoneware

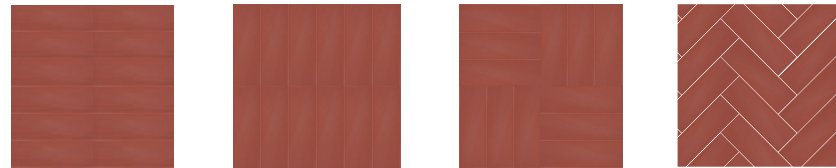
5X15CM
2"X6"

8MM
Monocromatic
Monochromatic

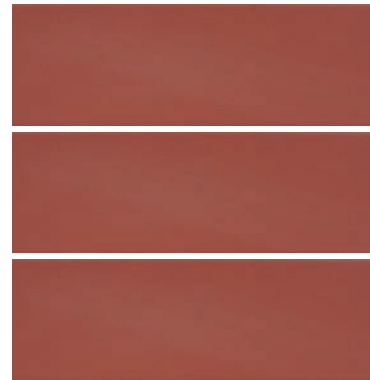
POSE LAYING SCHEME



POSE LAYING SCHEME



CANNELLA LUCIDO FGB110L ■10



CANNELLA MATT FGB123M ■10

STUCCHI CONSIGLIATI SUGGESTED GROUTS

Kerakoll

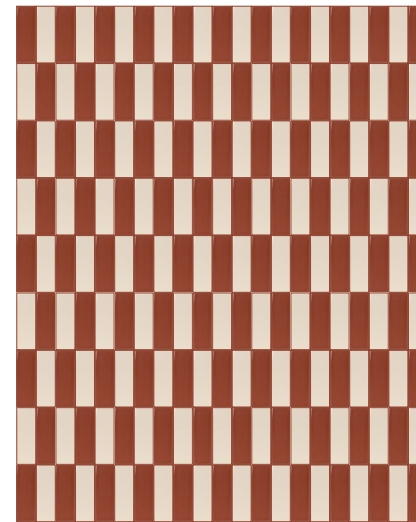
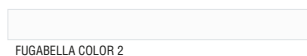
Mapei

Laticrete

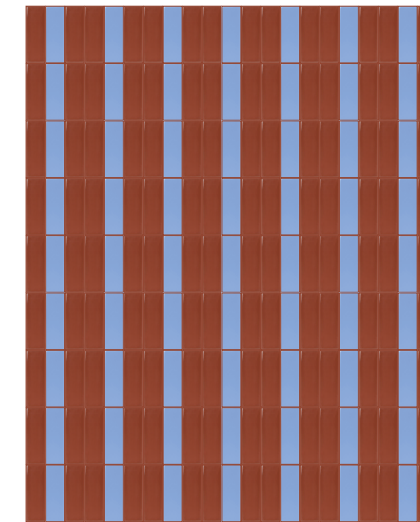
TONO SU TONO
TONE ON TONE



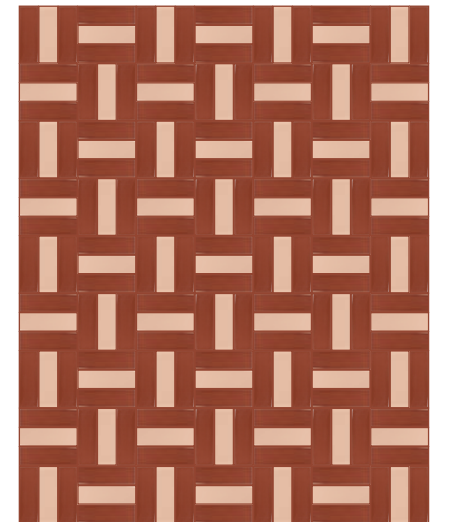
A CONTRASTO
CONTRASTING



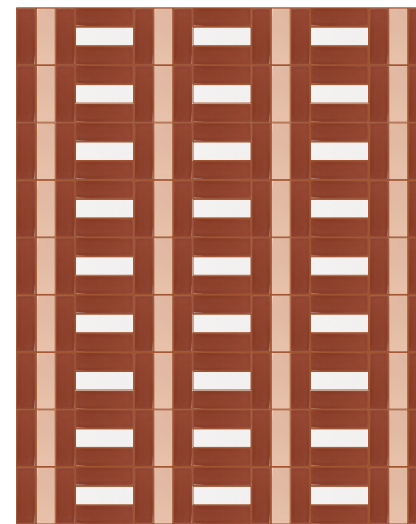
COPPER BEECH 36
50% CANNELLA | 50% SABBIA



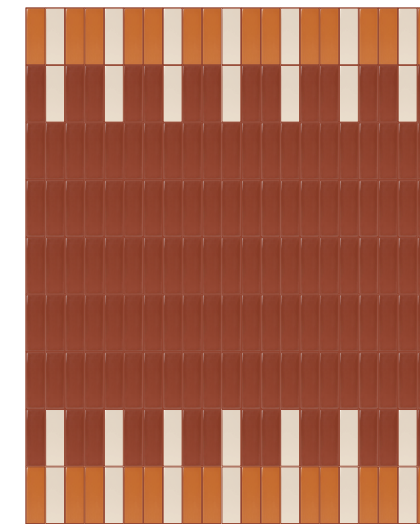
COPPER BEECH 36
66% CANNELLA | 34% CIELO



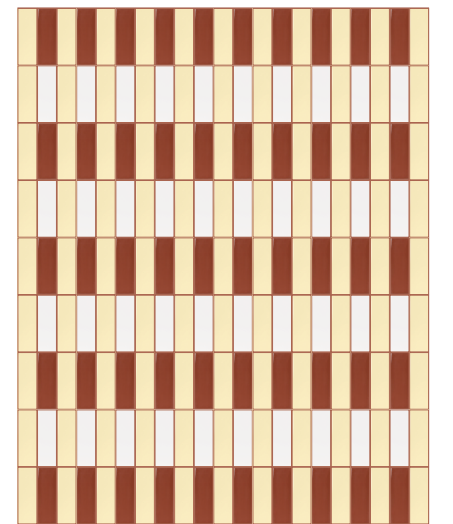
COPPER BEECH 36
66% CANNELLA | 34% CIPRIA



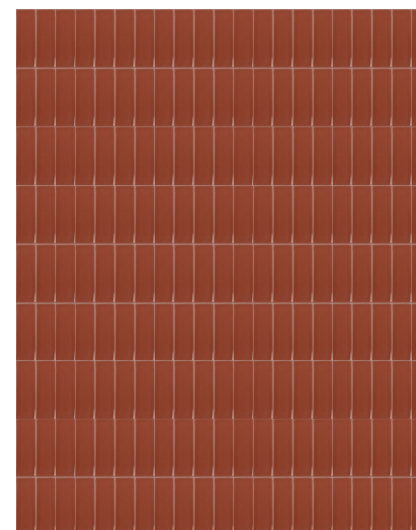
COPPER BEECH 36
66% CANNELLA | 19% CIPRIA | 15% BIANCO



COPPER BEECH 36
70% CANNELLA | 15% ARANCIO | 15% SABBIA



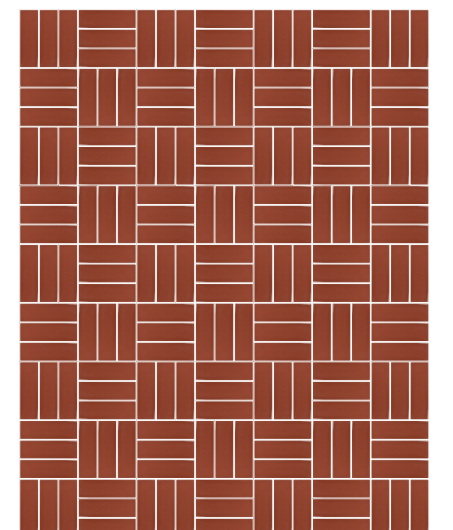
COPPER BEECH 36
27% CANNELLA | 20% BIANCO | 53% CHAMPAGNE



COPPER BEECH 36
100% CANNELLA



CERULEAN 168
100% CANNELLA



FUGABELLA COLOR 2
100% CANNELLA

BORGOGNA

SCHEMI DI POSA LAYING SCHEME

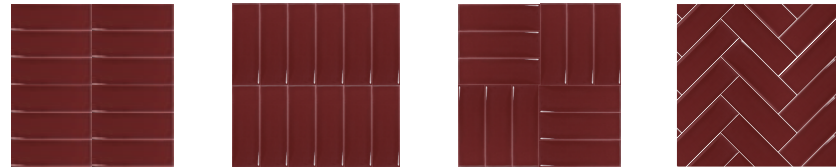
Gres porcellanato
Porcelain stoneware

5X15CM
2"X6"

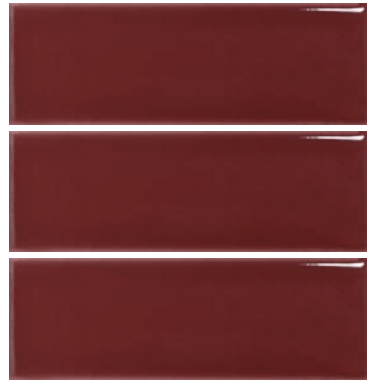
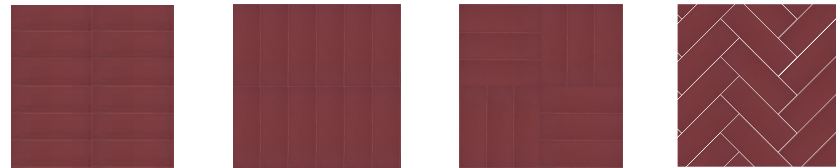
8MM

Monocromatic
Monochromatic

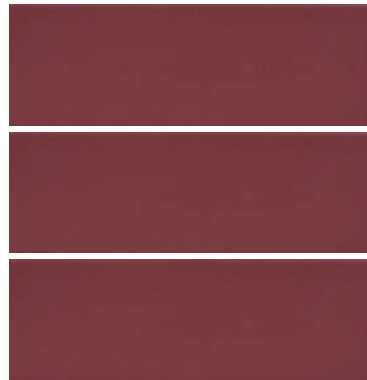
POSE LAYING SCHEME



POSE LAYING SCHEME



BORGOGNA LUCIDO FGB111L ■10



BORGOGNA MATT FGB124M ■10

STUCCHI CONSIGLIATI SUGGESTED GROUTS

Kerakoll

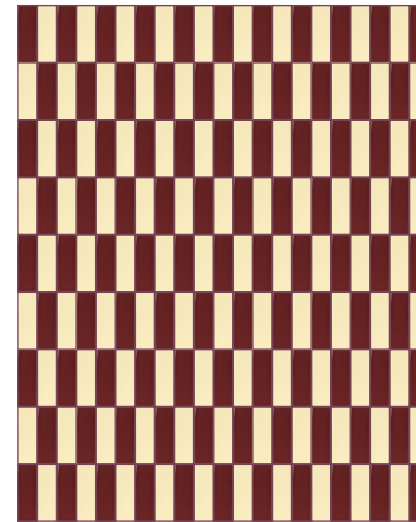
Mapei

Laticrete

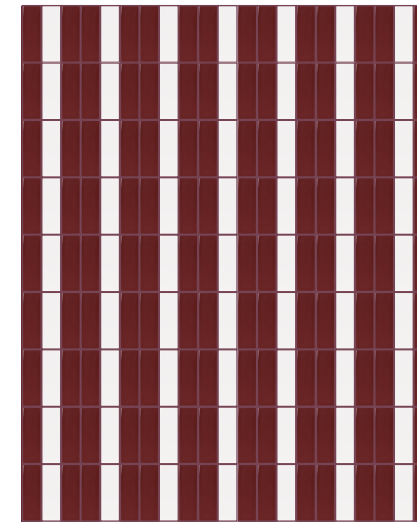
TONO SU TONO
TONE ON TONE



A CONTRASTO
CONTRASTING



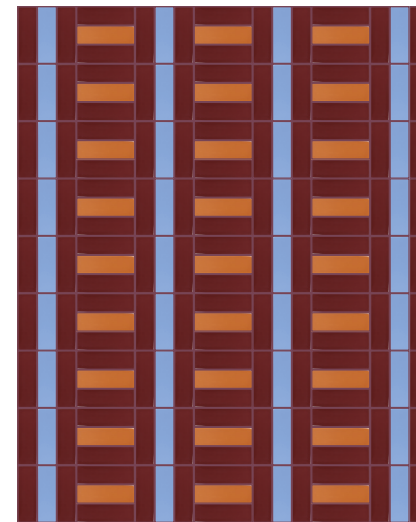
QUARRY RED 46
50% BORGOGNA | 50% CHAMPAGNE



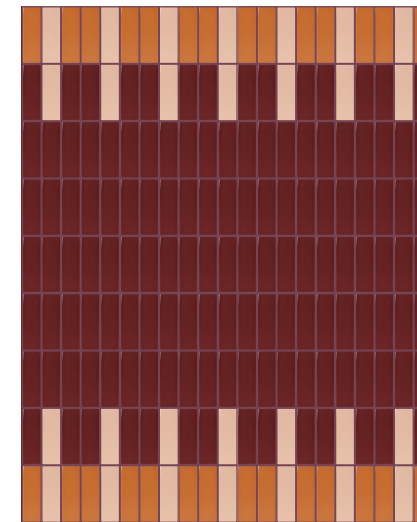
QUARRY RED 46
66% BORGOGNA | 34% BIANCO



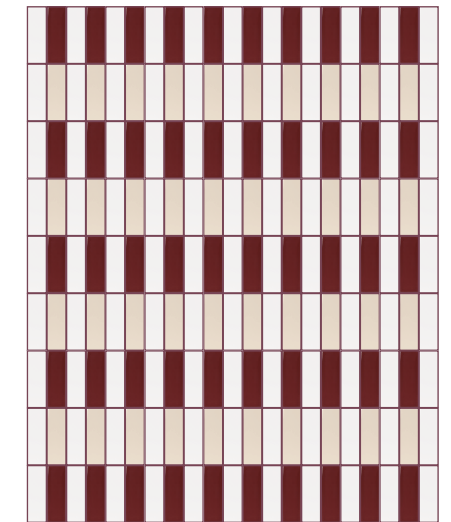
QUARRY RED 46
66% BORGOGNA | 34% CENERE



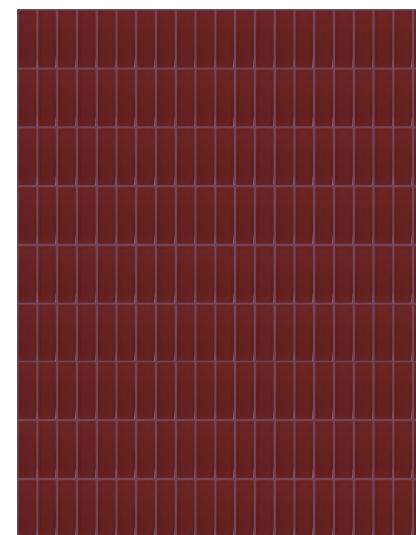
QUARRY RED 46
66% BORGOGNA | 19% CIELO | 15% ARANCIO



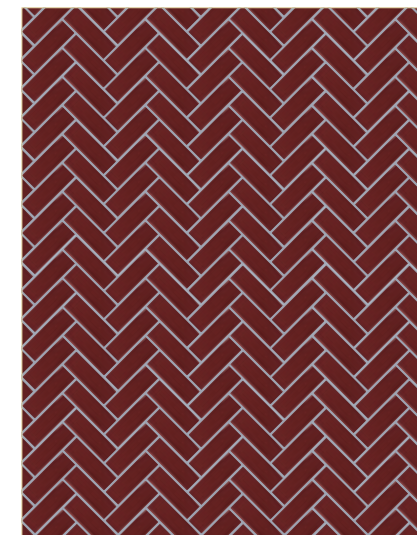
QUARRY RED 46
70% BORGOGNA | 15% CIPRIA | 15% ARANCIO



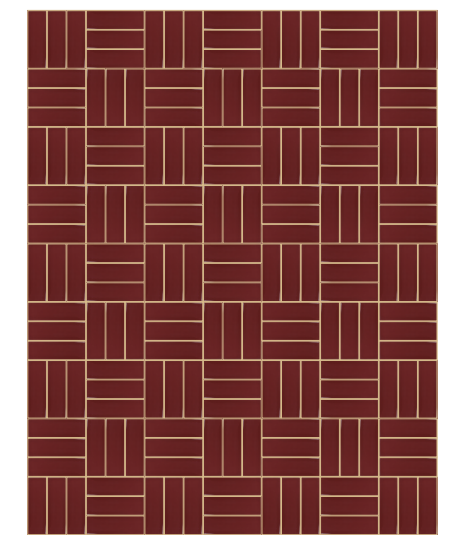
QUARRY RED 46
27% BORGOGNA | 20% SABBIA | 53% BIANCO



QUARRY RED 46
100% BORGOGNA



FUGABELLA COLOR 13
100% BORGOGNA



KASHMIRE 41
100% BORGOGNA

CHAMPAGNE

SCHEMI DI POSA LAYING SCHEME

Gres porcellanato
Porcelain stoneware

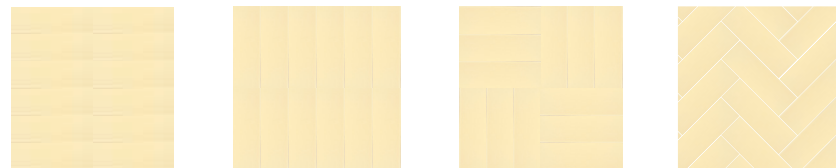
5X15CM
2"X6"

8MM
Monocromatic
Monochromatic

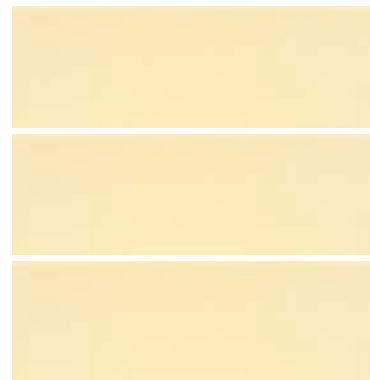
POSE LAYING SCHEME



POSE LAYING SCHEME



CHAMPAGNE LUCIDO FGB112L ■09



CHAMPAGNE MATT FGB125M ■09

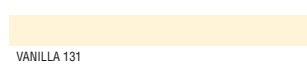
STUCCHI CONSIGLIATI SUGGESTED GROUTS

Kerakoll

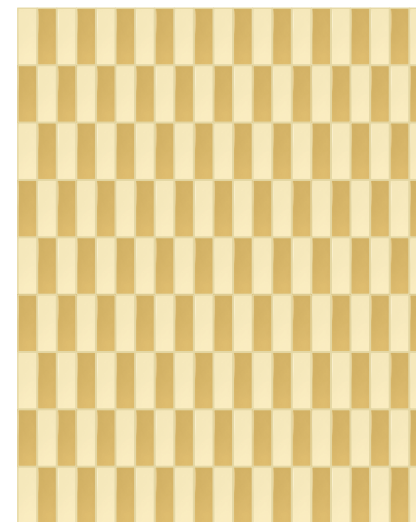
Mapei

Laticrete

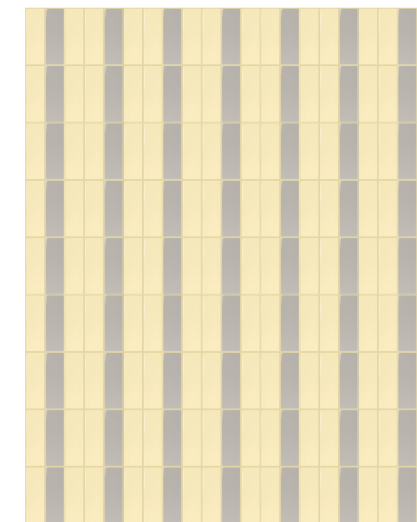
TONO SU TONO
TONE ON TONE



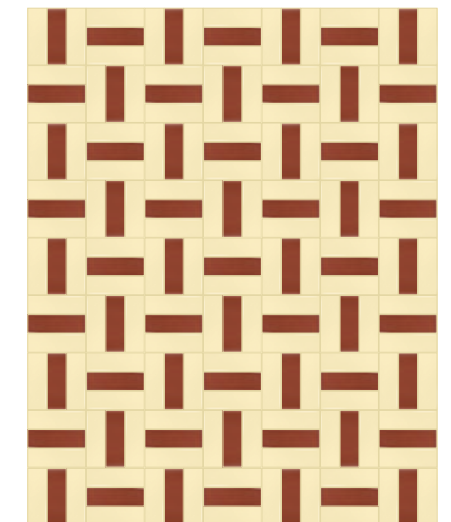
A CONTRASTO
CONTRASTING



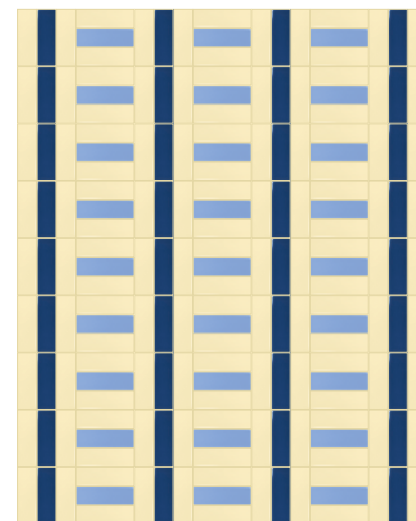
FUGABELLA COLOR 29
50% CHAMPAGNE | 50% SENAPE



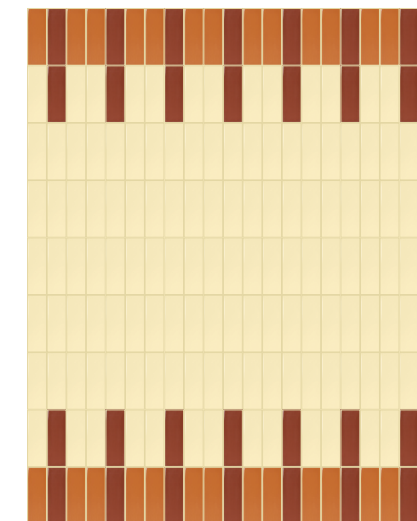
FUGABELLA COLOR 29
66% CHAMPAGNE | 34% CENERE



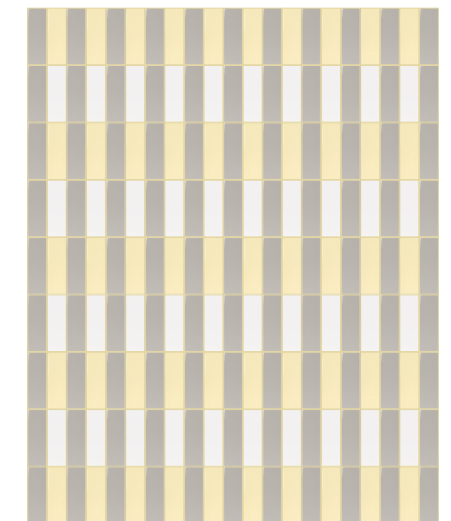
FUGABELLA COLOR 29
66% CHAMPAGNE | 34% CANNELLA



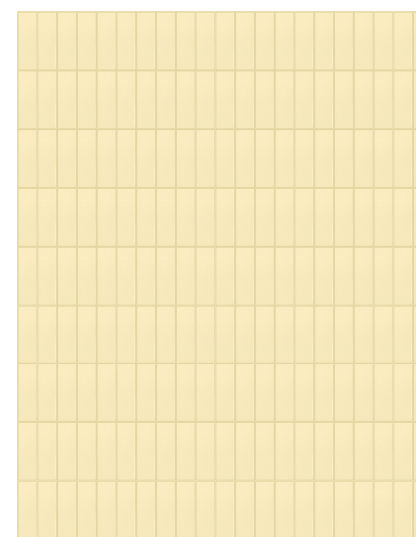
FUGABELLA COLOR 29
66% CHAMPAGNE | 19% OCEANO | 15% CIELO



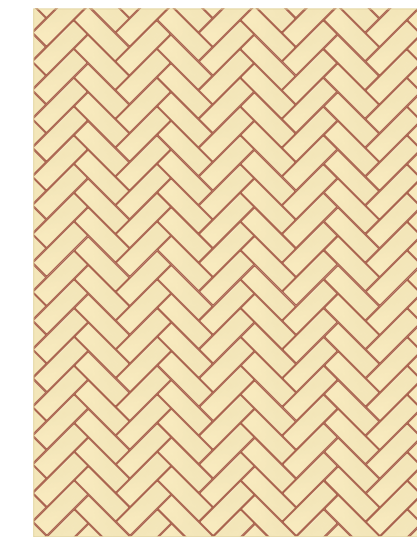
FUGABELLA COLOR 29
70% CHAMPAGNE | 15% CANNELLA | 15% ARANCIO



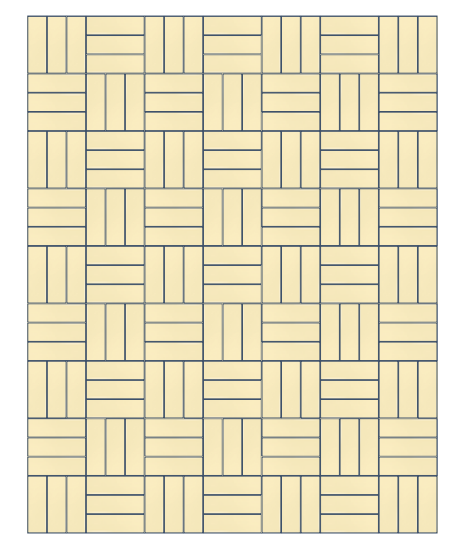
FUGABELLA COLOR 29
27% CHAMPAGNE | 20% BIANCO | 53% CENERE



FUGABELLA COLOR 29
100% CHAMPAGNE



COPPER BEECH 36
100% CHAMPAGNE



FUGABELLA COLOR 16
100% CHAMPAGNE

SENAPE

SCHEMI DI POSA LAYING SCHEME

Gres porcellanato
Porcelain stoneware

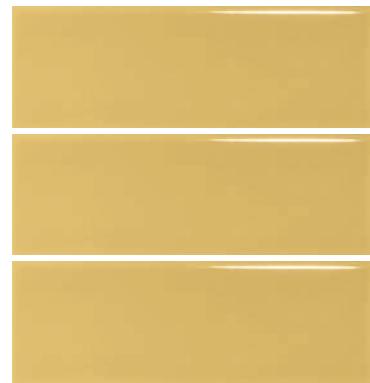
5X15CM
2"X6"

8MM
Monocromatic
Monochromatic

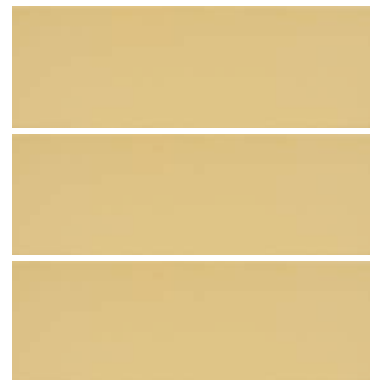
POSE LAYING SCHEME



POSE LAYING SCHEME



SENAPE LUCIDO FGB113L ■09



SENAPE MATT FGB126M ■09

STUCCHI CONSIGLIATI SUGGESTED GROUTS

Kerakoll

Mapei

Laticrete

TONO SU TONO
TONE ON TONE



FUGABELLA COLOR 30



ALMOND 138



KASHMIRE 41

A CONTRASTO
CONTRASTING



FUGABELLA COLOR 16



SPACE BLUE 172



CHAMBRA 37



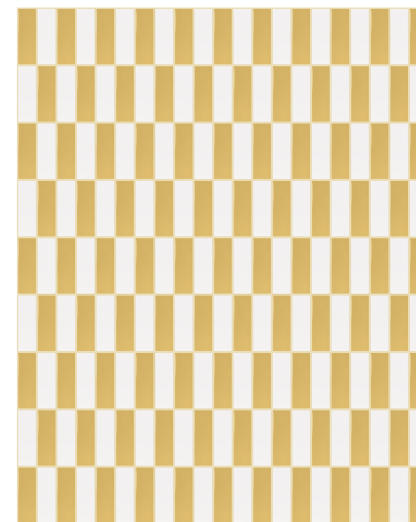
FUGABELLA COLOR 19



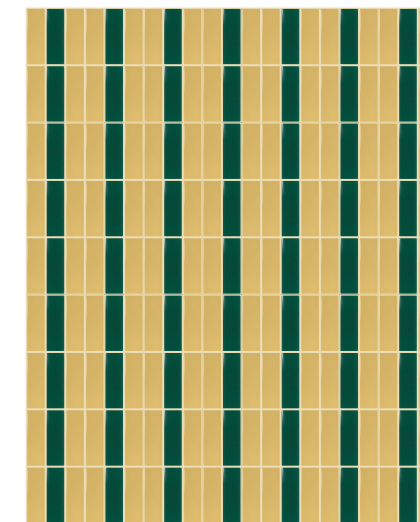
TORNADO 174



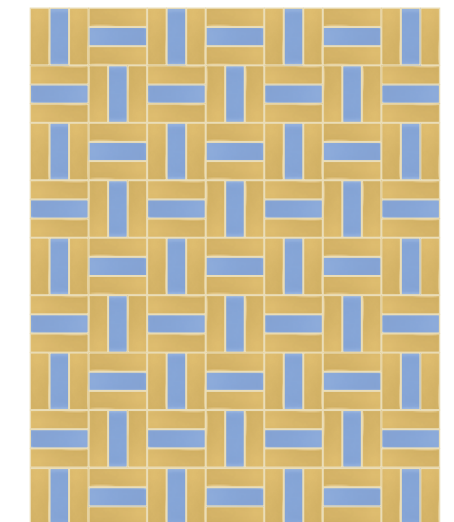
BOSTON FERN 33



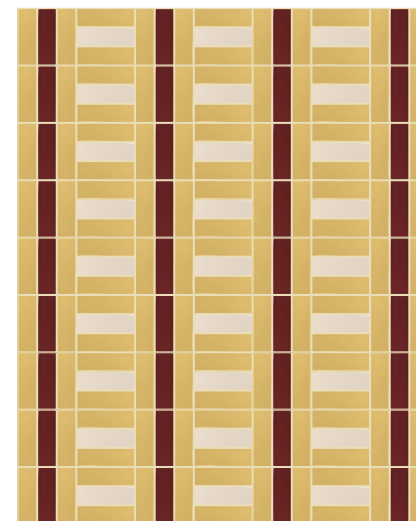
ALMOND 138
50% SENAPE | 50% BIANCO



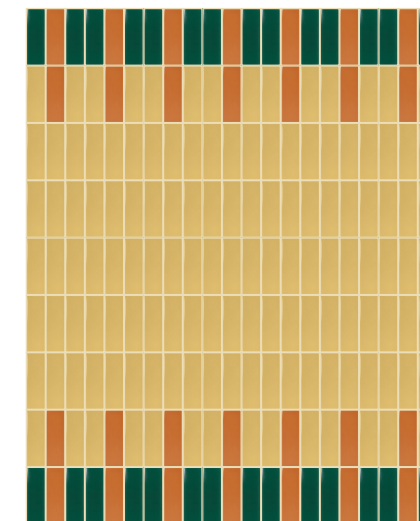
ALMOND 138
66% SENAPE | 34% SMERALDO



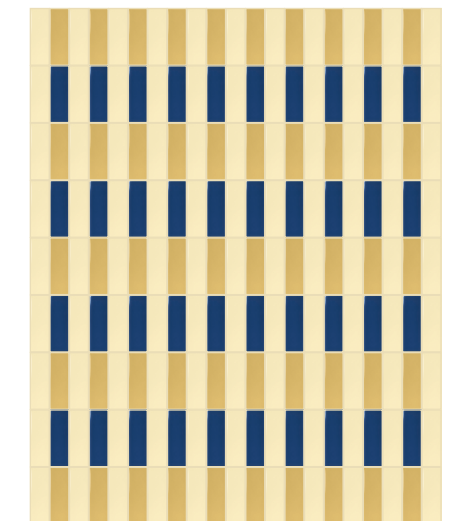
ALMOND 138
66% SENAPE | 34% CIELO



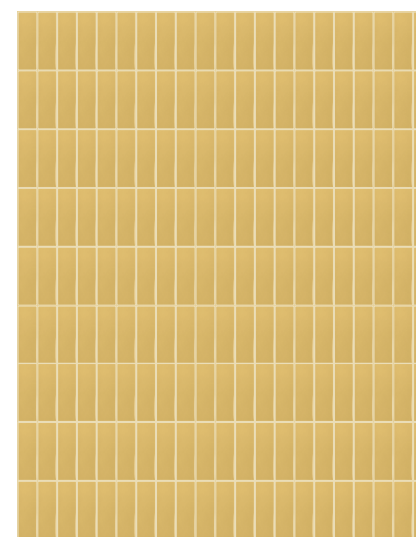
ALMOND 138
66% SENAPE | 19% BORGOGNA | 15% SABBIA



ALMOND 138
70% SENAPE | 15% SMERALDO | 15% ARANCIO



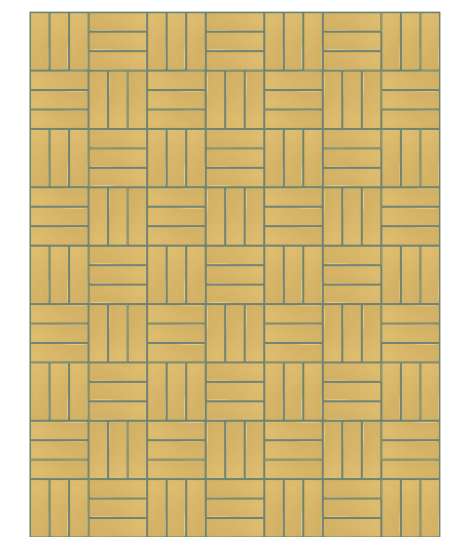
ALMOND 138
27% SENAPE | 20% OCEANO | 53% CHAMPAGNE



ALMOND 138
100% SENAPE



CHAMBRA 37
100% SENAPE



FUGABELLA COLOR 19
100% SENAPE

SABBIA

SCHEMI DI POSA LAYING SCHEME

Gres porcellanato
Porcelain stoneware

5X15CM
2"X6"

8MM
Monocromatic
Monochromatic

POSE LAYING SCHEME



POSE LAYING SCHEME



SABBIA LUCIDO FGB102L ■09



SABBIA MATT FGB115M ■09

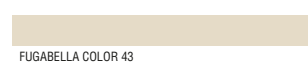
STUCCHI CONSIGLIATI SUGGESTED GROUTS

Kerakoll

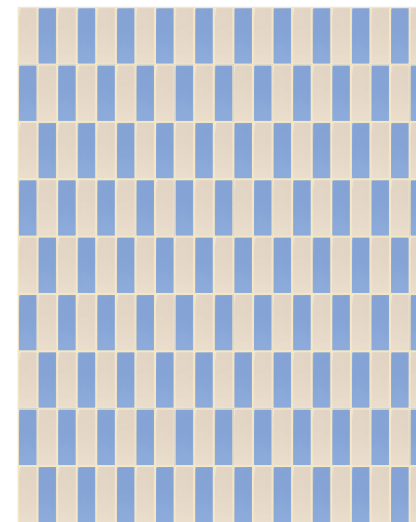
Mapei

Laticrete

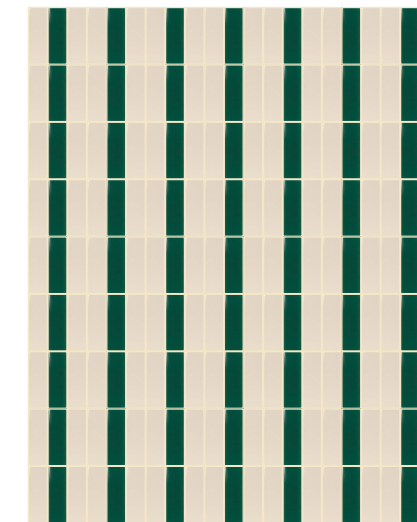
TONO SU TONO
TONE ON TONE



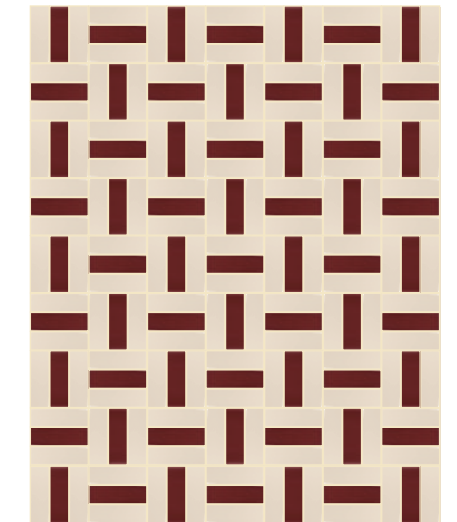
A CONTRASTO
CONTRASTING



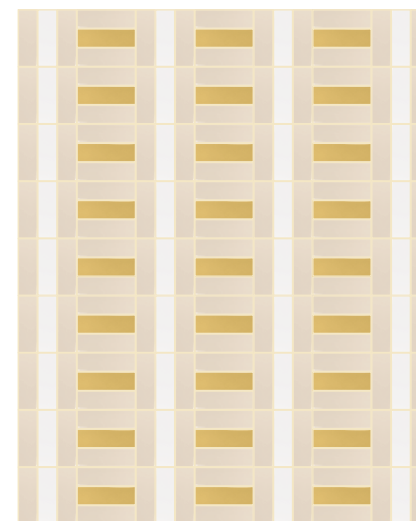
MUSHROOM 39
50% SABBIA | 50% CIELO



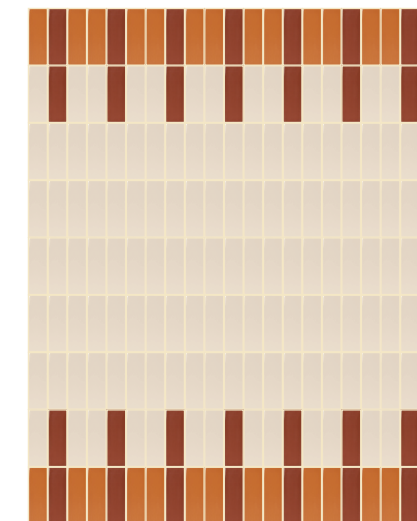
MUSHROOM 39
66% SABBIA | 34% SMERALDO



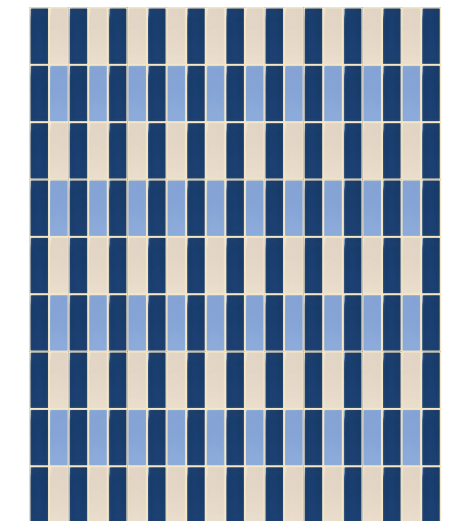
MUSHROOM 39
66% SABBIA | 34% BORGOGNA



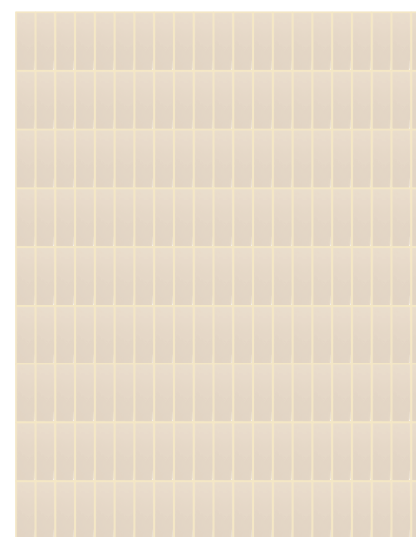
MUSHROOM 39
66% SABBIA | 19% BIANCO | 15% SENAPE



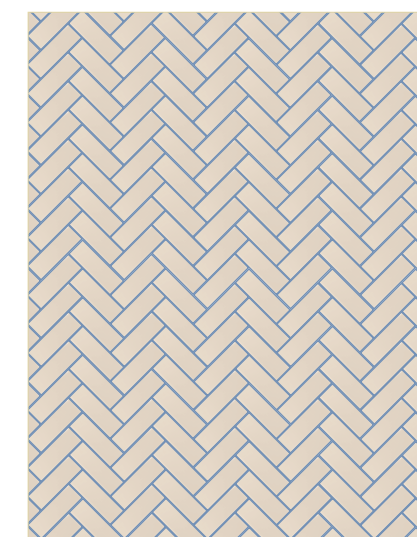
MUSHROOM 39
70% SABBIA | 15% CANNELLA | 15% ARANCIO



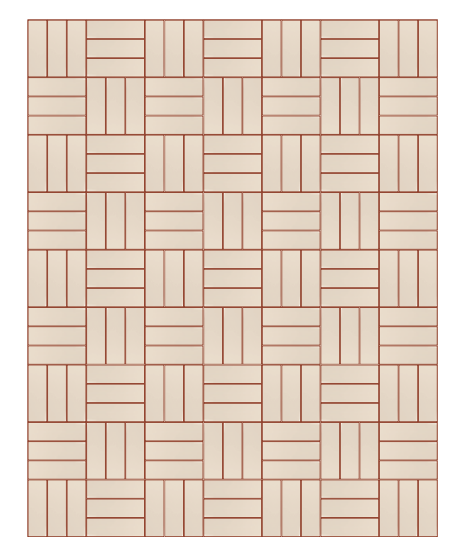
MUSHROOM 39
27% SABBIA | 20% CIELO | 53% OCEANO



MUSHROOM 39
100% SABBIA



CERULEAN 168
100% SABBIA



COPPER BEECH 36
100% SABBIA

CENERE

SCHEMI DI POSA LAYING SCHEME

Gres porcellanato
Porcelain stoneware

5X15CM
2"X6"

8MM
Monocromatic
Monochromatic

POSE LAYING SCHEME



POSE LAYING SCHEME



CENERE LUCIDO FGB103L ■09



CENERE MATT FGB116M ■09

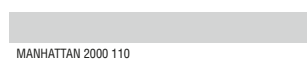
STUCCHI CONSIGLIATI SUGGESTED GROUTS

Kerakoll

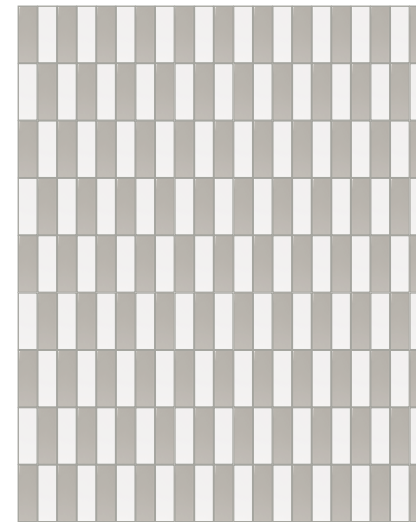
Mapei

Laticrete

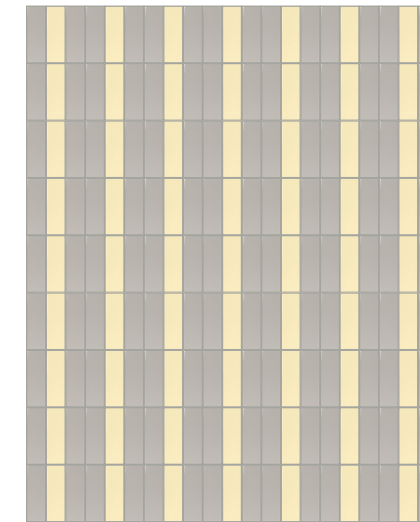
TONO SU TONO
TONE ON TONE



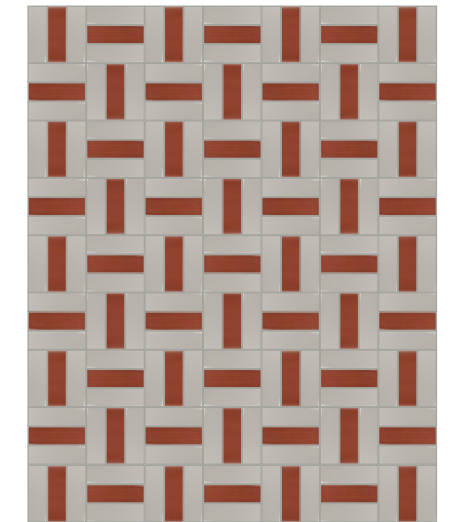
A CONTRASTO
CONTRASTING



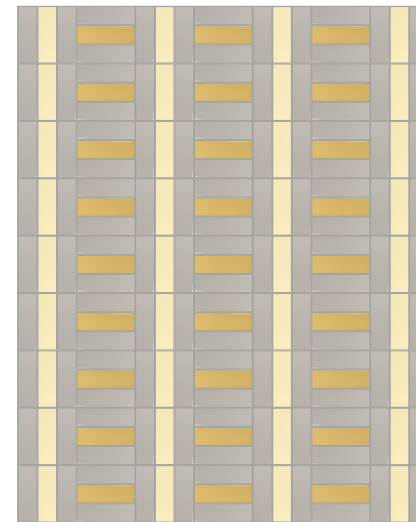
STERLING SILVER 78
50% CENERE | 50% BIANCO



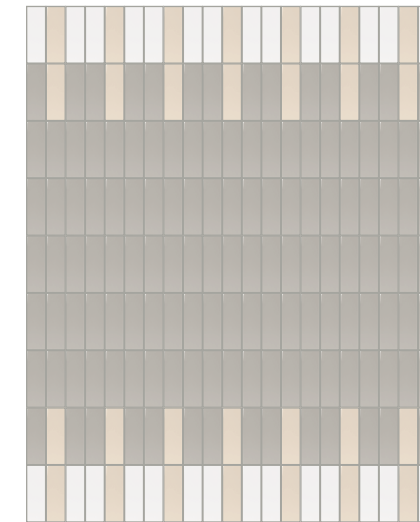
STERLING SILVER 78
66% CENERE | 34% CHAMPAGNE



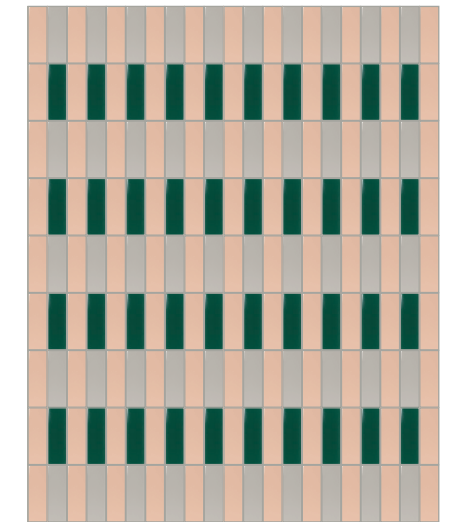
STERLING SILVER 78
66% CENERE | 34% CANNELLA



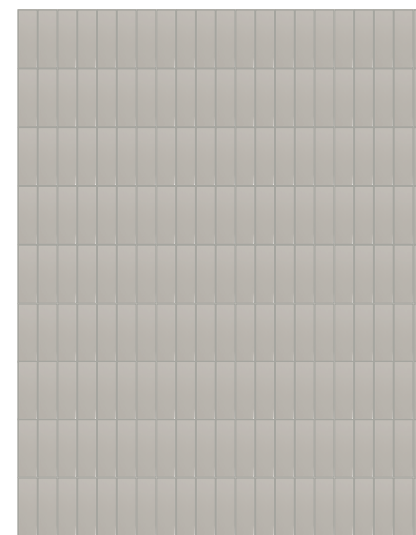
STERLING SILVER 78
66% CENERE | 19% CHAMPAGNE | 15% SENAPE



STERLING SILVER 78
70% CENERE | 15% BIANCO | 15% SABBIA



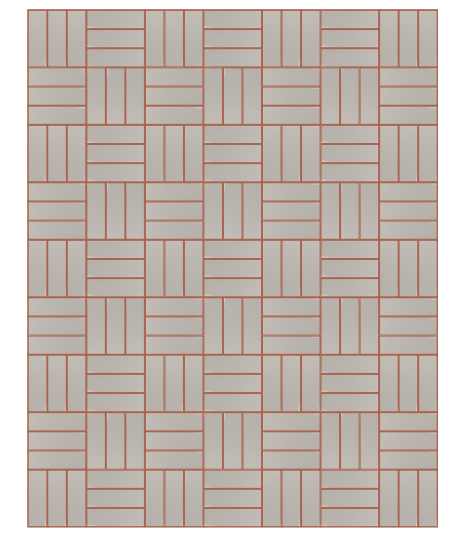
STERLING SILVER 78
27% CENERE | 20% SMERALDO | 53% CIPRIA



STERLING SILVER 78
100% CENERE



BOSTON FERN 33
100% CENERE



COPPER BEECH 36
100% CENERE

BIANCO

SCHEMI DI POSA LAYING SCHEME

Gres porcellanato
Porcelain stoneware

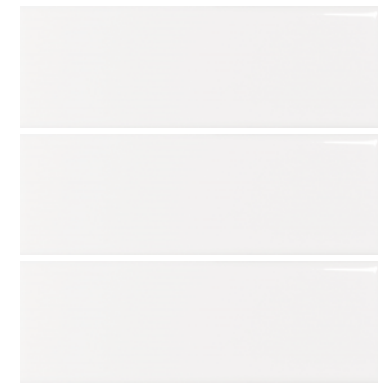
5X15CM
2"X6"

8MM
Monocromatic
Monochromatic

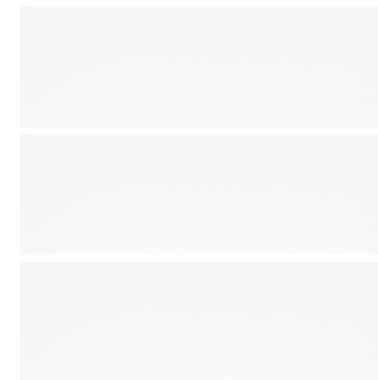
POSE LAYING SCHEME



POSE LAYING SCHEME



BIANCO LUCIDO FGB101L ■09



BIANCO MATT FGB114M ■09

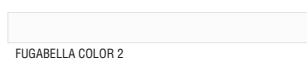
STUCCHI CONSIGLIATI SUGGESTED GROUTS

Kerakoll

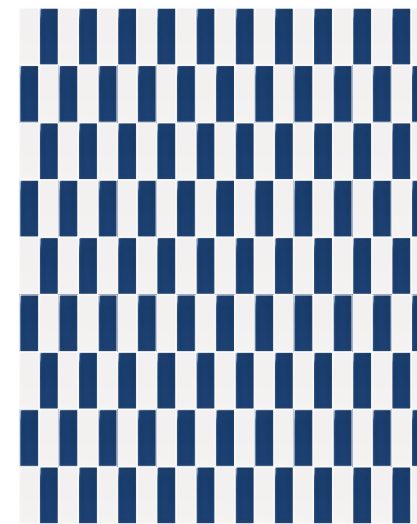
Mapei

Laticrete

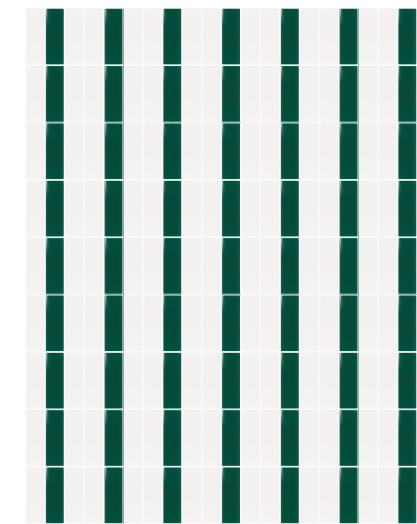
TONO SU TONO
TONE ON TONE



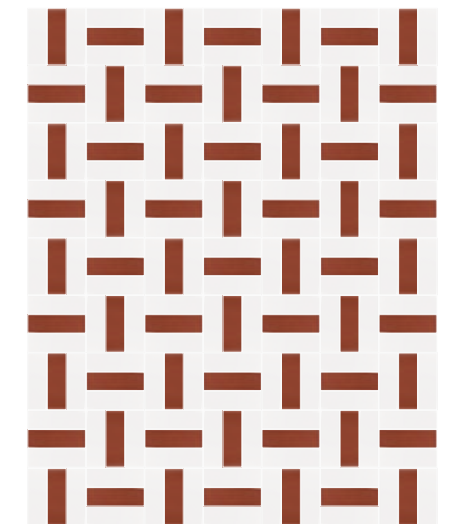
A CONTRASTO
CONTRASTING



FUGABELLA COLOR 2
50% BIANCO | 50% OCEANO



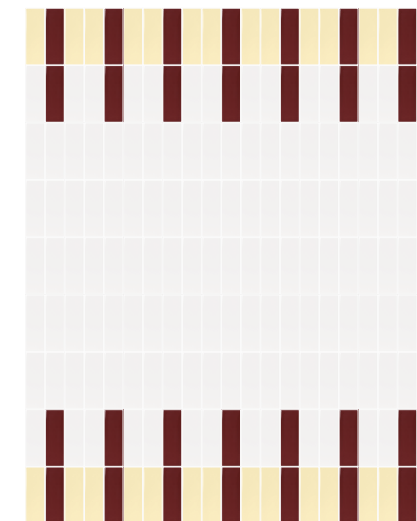
FUGABELLA COLOR 2
66% BIANCO | 34% SMERALDO



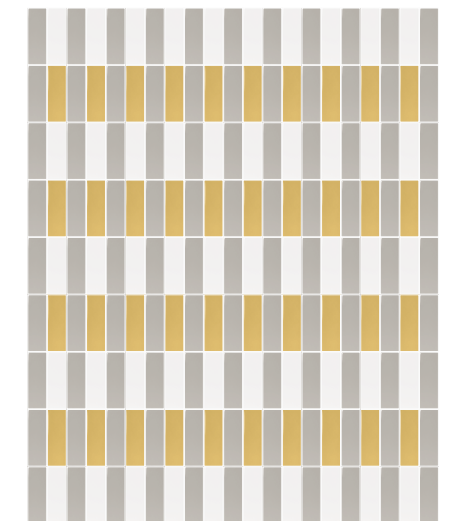
FUGABELLA COLOR 2
66% BIANCO | 34% CANNELLA



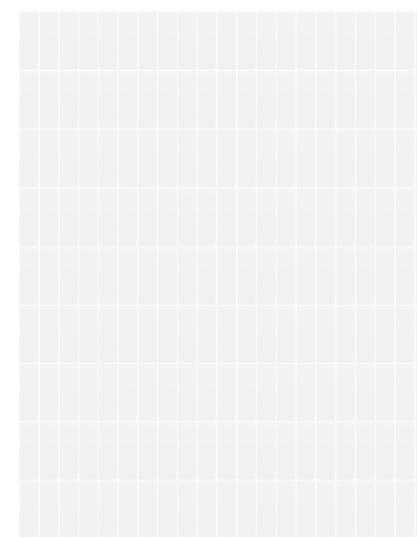
FUGABELLA COLOR 2
66% BIANCO | 19% CIELO | 15% OCEANO



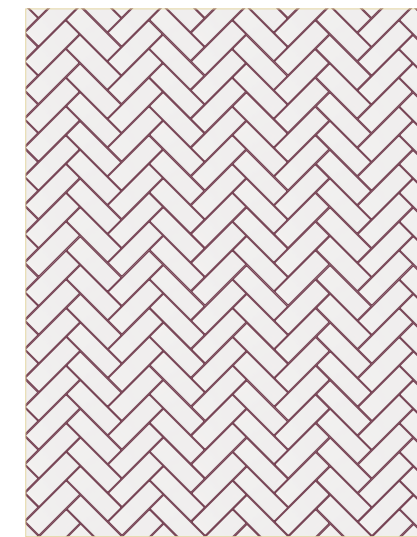
FUGABELLA COLOR 2
70% BIANCO | 15% BORGOGNA | 15% CHAMPAGNE



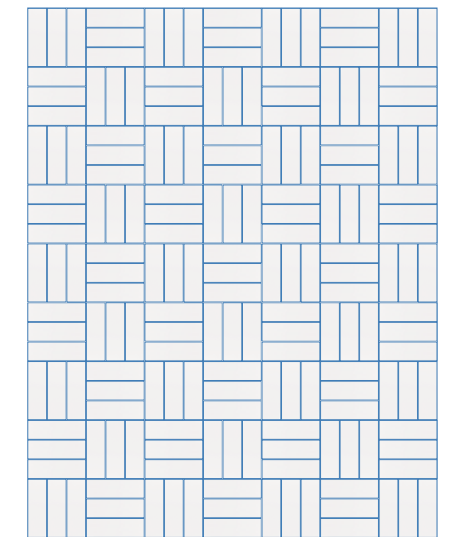
FUGABELLA COLOR 2
27% BIANCO | 20% SENAPE | 53% CENERE



FUGABELLA COLOR 2
100% BIANCO



QUARRY RED 46
100% BIANCO

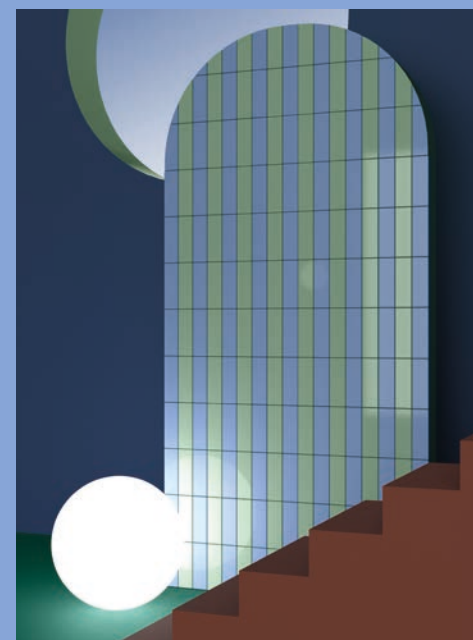


ARTIC BLUE 04
100% BIANCO

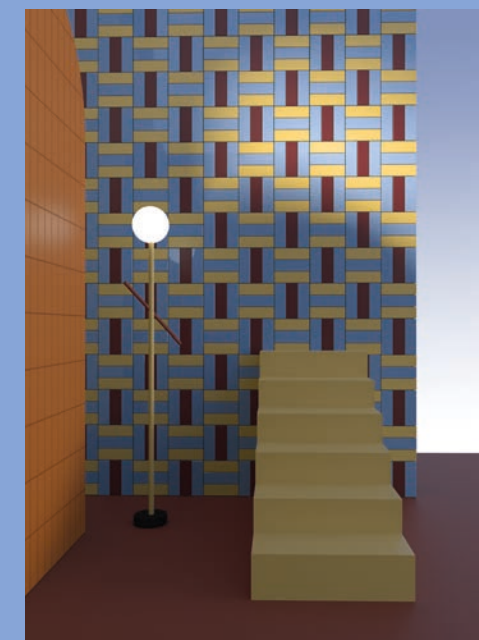


INTERAZIONI COLORE INTERPLAY COLOUR

/ COLOUR COMBINATIONS



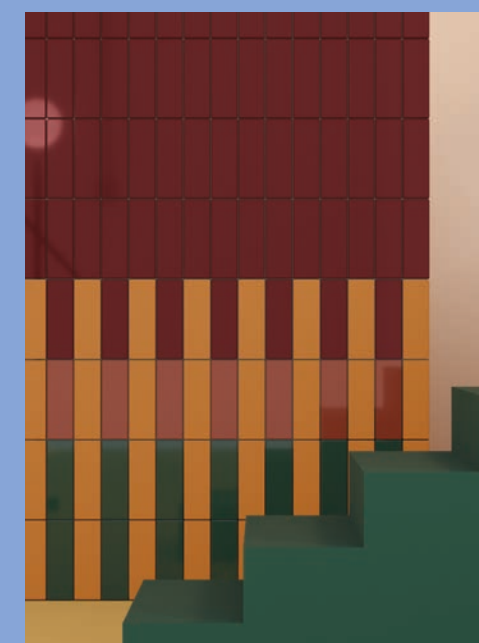
Färgblock menta lucido, cielo matt



Färgblock senape matt, borgogna matt, cielo matt, arancio matt



Färgblock arancio lucido, senape matt, cipria lucido



Färgblock arancio matt, cannella lucido, smeraldo lucido, borgogna lucido

Färgblock borgogna lucido, arancio matt, cannella matt, champagne matt, smeraldo lucido, menta matt

CARATTERISTICHE TECNICHE TECHNICAL FEATURES

| | | NORMA standard | VALORE RICHIESTO required standards | FÄRGBLOCK LUCIDO | FÄRGBLOCK MATT |
|--|--|----------------------|---|--|--|
| DIMENSIONI dimensions | LUNGHEZZA E LARGHEZZA length and width | UNI-EN ISO 10545-2 | ± 0.6% | CONFORME compliant | CONFORME compliant |
| | SPESORE thickness | UNI-EN ISO 10545-2 | ± 5% | CONFORME compliant | CONFORME compliant |
| | RETTILINEITÀ DEGLI SPIGOLI straightness of sides | UNI-EN ISO 10545-2 | ± 0.5% | CONFORME compliant | CONFORME compliant |
| | ORTOGONALITÀ rectangularity | UNI-EN ISO 10545-2 | ± 0.5% | CONFORME compliant | CONFORME compliant |
| | PLANARITÀ: surface flatness: CURVATURA DEL CENTRO centre curvature CURVATURA DELLO SPIGOLO edge curvature SVERGOLAMENTO warpage | UNI-EN ISO 10545-2 | ± 0.5% | CONFORME compliant | CONFORME compliant |
| RESISTENZA ALLA FLESSIONE bending strenght | CARICO DI ROTTURA breaking of rupture | UNI-EN ISO 10545-4 | > 1300 N (≥ 7,5 MM) > 700 N (< 7,5 MM) | CONFORME compliant | CONFORME compliant |
| | MODULO DI ROTTURA modulus of rupture | UNI-EN ISO 10545-4 | > 35 N/MM² (≥ 7,5 MM) | CONFORME compliant | CONFORME compliant |
| | RESISTENZA ALL'ABRASIONE DELLE PIASTRELLE SMALTATE resistance to abrasion of glazed tiles | UNI-EN ISO 10545-7 | - | CLASSE 3 COLORI CHIARI CLASSE 2 COLORI SCURI class 3 light colors class 2 dark colors | CLASSE 3 COLORI CHIARI CLASSE 2 COLORI SCURI class 3 light colors class 2 dark colors |
| | ASSORBIMENTO D'ACQUA water absorption | UNI-EN ISO 10545-3 | ≤ 0,5 % | CONFORME compliant | CONFORME compliant |
| | RESISTENZA DEI COLORI ALLA LUCE colour resistance to light | DIN 51094 | - | RESISTENTE resistant | RESISTENTE resistant |
| | COEFFICIENTE DI DILATAZIONE TERMICA LINEARE (100° C) linear thermal expansion coefficient (100° C) | UNI-EN ISO 10545-8 | METODO DISPONIBILE test method available | METODO DISPONIBILE test method available | METODO DISPONIBILE test method available |
| | RESISTENZA AGLI SBALZI TERMICI thermal shock resistance | UNI-EN ISO 10545-9 | - | RESISTENTE resistant | RESISTENTE resistant |
| | RESISTENZA AL GELO frost resistance | UNI-EN ISO 10545-12 | - | RESISTENTE resistant | RESISTENTE resistant |
| | RESISTENZA AL CAVILLO crazing resistance | UNI-EN ISO 10545-11 | - | RESISTENTE resistant | RESISTENTE resistant |
| | RESISTENZA ALLE MACCHIE resistance to stains | UNI-EN ISO 10545-14 | CLASSE 3 MIN. | CLASSE 5 Class 5 | CLASSE 5 Class 5 |
| | RESISTENZA CHIMICA chemical resistance | UNI-EN ISO 10545-13 | GB MIN. | GARANTITA guaranteed (GA GLA GHA) | GARANTITA guaranteed (GA GLA GHA) |
| | PIOMBO E CADMIO RILASCIATI lead and cadmium given off | UNI-EN ISO 10545-15 | METODO DISPONIBILE test method available | METODO DISPONIBILE test method available | METODO DISPONIBILE test method available |
| | REAZIONE AL FUOCO reaction to fire | EN 13501-1 | - | A1 _{FL} -A1 | A1 _{FL} -A1 |
| | ANGOLO CRITICO DI SLITTAMENTO slip resistance (ramp test) | DIN 51130 | - | - | R9 |
| | RESISTENZA ALLO SLITTAMENTO slip resistance (pendulum test) | UNI-EN ISO 16165 C | - | - | 37 WET |
| | RESISTENZA ALLO SLITTAMENTO slip resistance (pendulum test) | AS/NZS 4586 | ≥ 42 | - | P3 |
| | COEFFICIENTE DINAMICO DI ATTRITO SUL BAGNATO (DCOF) wet dynamic coefficient of friction (DCOF) | ANSI A137.1-BOT 3000 | - | - | CONFORME compliant |
| | VARIAZIONE DI TONO shade variations | - | - | V1 | V1 |

GRES PORCELLANATO SMALTATO GLAZED PORCELAIN

Piastrelle di ceramica pressate a secco con assorbimento d'acqua Eb ≤ 0,5 %. Caratteristiche di qualità secondo i test di controllo previsti dalla norma EN14411:2013 appendice L gruppo Bla GL

Dry-pressed ceramic tiles with water absorption Eb ≤ 0,5 %. Quality specification, according to control test of EN14411:2013 appendix L group Bla GL

Imballi Packing

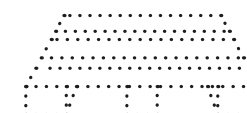
| ARTICOLO ITEM | FORMATO SIZE | PZ | MQ | KG |
|-------------------|----------------|----|-----|------|
| färgbblock matt | 5X15cm 2"x6" | 80 | 0,6 | 10,9 |
| färgbblock lucido | 5X15cm 2"x6" | 80 | 0,6 | 10,9 |

SCATOLA BOX

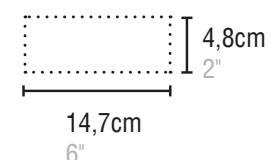


| ARTICOLO ITEM | FORMATO SIZE | BOX | PZ | MQ | KG |
|-------------------|----------------|-----|------|------|-----|
| färgbblock matt | 5X15cm 2"x6" | 84 | 6720 | 50,4 | 936 |
| färgbblock lucido | 5X15cm 2"x6" | 84 | 6720 | 50,4 | 936 |

PALLET PALLET



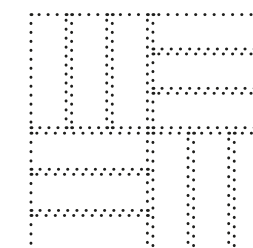
Dimensioni Sizing



Fuga Joint

Posa Modulare Modular installation

fuga consigliata 1,5mm suggested joint 1,5mm



Colori NCS Colour NCS

| | |
|-----------|-----------------|
| bianco | NCS S 0500-N |
| sabbia | NCS S 1505-Y40R |
| cenere | NCS S 3502-R |
| champagne | NCS S1515-Y10R |
| senape | NCS S 3030-Y10R |
| borgogna | NCS S 5030-R |
| cannella | NCS S 4040-Y80R |
| arancio | NCS S 3040-Y60R |
| cipria | NCS S 2020-Y60R |
| menta | NCS S 2020-G10Y |
| smeraldo | NCS S 6030-G |
| cielo | NCS S 2030-R80B |
| oceano | NCS S 6020-R70B |

Abbinamenti consigliati Suggested Combinations

Confetti | Oltre | Minima8.6 | Alchimia | Pigmento

CREDITS

ART DIRECTOR QC

Ramona Macchi

MARKETING COORDINATOR

Diletta Levrini

GRAPHIC PROJECT

discromie.com

PHOTOGRAPHY ART DIRECTION

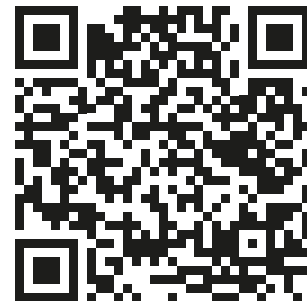
Elodie Cavallaro

PHOTOGRAPHY

Elodie Cavallaro

PRINTING

Spazio Stampa



TEKLA EVELINA SEVERIN

@teklan

Tekla, the Swedish colorist and designer is regarded as a leading figure in the world of design.

Tekla, aka "Teklan", is well known for her bold colour compositions and the playful and often monochromatic design of her graphic style.

It is this use of unexpected colour combinations that make her so contemporary and sought after for new international projects. She works in a multidisciplinary sphere: from artistic direction to set design and photography by combining the profession of interior architect with personal projects including art, installation and photography.

She has recently been named by German AD as one of the most influential people in the design sector. This year she has also been awarded the ELLE DECO EDIDA 2022 International Award for best kitchen designer and the ELLE DECO Swedish Award for best interior designer.

Colorista e designer di interni svedese, Tekla è considerata una delle figure di spicco del mondo del design.

Tekla in arte "Teklan" è nota per le sue forti composizioni di colori e per il suo stile grafico dal design giocoso, spesso monocromatico. È proprio l'uso di combinazioni cromatiche inaspettate che la rende particolarmente attuale e richiesta per nuovi progetti internazionali. Lavora in un ambito multidisciplinare: dalla direzione artistica, al set design e alla fotografia, combinando la professione di architetto d'interni a progetti personali tra arte, installazione e fotografia.

Di recente è stata indicata da German AD come una delle persone più influenti nel settore del design. Inoltre quest'anno è stata premiata con il Premio Internazionale ELLE DECO EDIDA 2022 come miglior designer di cucine e con il Premio svedese ELLE DECO come miglior interior designer.

Coloriste et designer d'intérieur suédoise, Tekla est considérée comme l'une des figures de proue du monde du design.

Tekla alias "Teklan" est connue pour ses compositions de couleurs fortes et son style graphique ludique, souvent monochromatique. C'est précisément l'utilisation de combinaisons de couleurs inattendues qui la rend particulièrement actuelle et demandée pour de nouveaux projets internationaux. Elle travaille dans un domaine multidisciplinaire : de la direction artistique, à la scénographie et à la photographie, combinant la profession d'architecte d'intérieur avec des projets personnels incluant l'art, l'installation et la photographie. Elle a récemment été désignée par German AD comme l'une des personnes les plus influentes du monde du design.

De plus, cette année, elle a reçu le prix international ELLE DECO EDIDA 2022 en tant que meilleur designer de cuisines et le prix suédois ELLE DECO en tant que meilleure designer d'intérieur.