

THE ROCK

LEA
CERAMICHE

USES

hotels	public spaces
housing	airports
bar - restaurants	malls
shops	train stations

PACKING

article	carton		pallet				
	pcs.	sf	kg	cts.	sf	kg	
field tile	18"x36"	3	1.22	27.5	30	36.6	825.0
field tile	24"x24"	4	1.45	32.5	32	46.4	1040.0
field tile	12"x24"	7	1.27	28.5	32	40.6	912.0
bullnose	4"x24"	12	7.20	15.5	60	43.2	928.8

CERTIFICATIONS



* LEED Through Panariagroup Industrie Ceramiche S.p.A., Lea Ceramiche is an ordinary member of the Green Building Council and the GBC Italia.

LEA CERAMICHE
Via Cameazzo, 21
41042 Fiorano Modenese
Modena Italy
Tel +39 0536 837811
Fax +39 0536 830326
info@ceramichelea.it
www.ceramichelea.com

SHOWROOM LEA CERAMICHE
Via Durini, 3
20122 Milano
Tel +39 02 76011406
showroom_milano@ceramichelea.it

LEA NORTH AMERICA, LLC
800 Clanton Road, Suite N
Charlotte, NC 28217
Tel +1 704 522 6300
Fax +1 704 522 6080
info@leausa.us
www.leausa.us

TECHNICAL CHARACTERISTICS

THE ROCK
thickness 10mm
glazed (GL)
Porcelain Tiles (Class P1)

TECHNICAL CHARACTERISTICS	test method ASTM	required values ANSI A 137.1	average values	
water absorption	ASTM C373	≤ 0.5%	compliant	
breaking strength	ASTM C648	≥ 250 pounds	compliant	
resistance to surface abrasion	ASTM C1027 (PEI method)	not required	4	
scratch resistance	CTI 81-7 A (MOHS method)	not required	7	
resistance to abrasive wear	ASTM C501	lw ≥ 100	lw ≥ 200	
linear thermal expansion	ASTM C372	not required	α ≤ 8x10 ⁻⁶ °C ⁻¹ α ≤ 4.4x10 ⁻⁶ °F ⁻¹	
stain resistance	CTI-T-81 D	not required	resistant	
chemical resistance	ASTM C650	not required	resistant	
frost resistance	ASTM C1026	not required	resistant	
bond strenght	ASTM C482	≥ 50 PSI	compliant	
slip resistance	ANSI A 137.1: 2012	DCOF _F ≥ 0.42	DCOF _F ≥ 0.42	
shade variation	ANSI A 137.1	according to manufacturer's statement	V4	
dimensions	warpage edge	ASTM C485	± 0.40% or max ± 0.05 inch for tiles up to 24"x24" ± 0.40% or max ± 0.07 inch for tiles larger than 24"x24"	compliant
	warpage diagonal	ASTM C485	± 0.40% or max ± 0.07 inch	compliant
	nominal sizes	ASTM C499	-3.0% / +2.0% of nominal dimensions	± 1.50%
	caliber range	ASTM C499	± 0.25% or max ± 0.03 inch	compliant
	thickness	ASTM C499	≤ 0.040 inch	≤ 0.030 inch
wedging	ASTM C502	± 0.25% or max ± 0.03 inch	compliant	



TAUPE ROCK
Floor
24"x24"



BLACK ROCK
Floor
18"x36"

LEA
CERAMICHE



GREY ROCK

Floor 24"x24"
Wall 12"x24" - muretto 12"x24"

IVORY ROCK

Floor 24"x24"

SIZES AND COLORS

IVORY ROCK



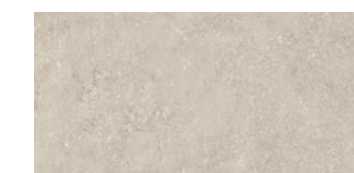
18"x36" rtt LGGR120



9"x36" rtt



24"x24" rtt LGWR120



12"x24" rtt LGVR120

TAUPE ROCK



18"x36" rtt LGGR130



9"x36" rtt



24"x24" rtt LGWR130

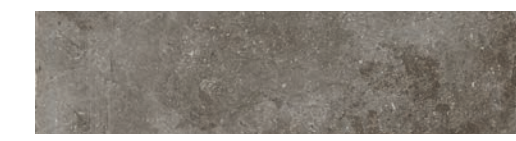


12"x24" rtt LGVR130

GREY ROCK



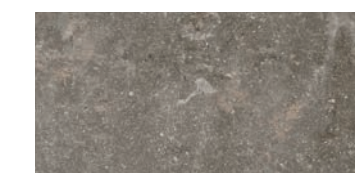
18"x36" rtt LGGR110



9"x36" rtt



24"x24" rtt LGWR110



12"x24" rtt LGVR110

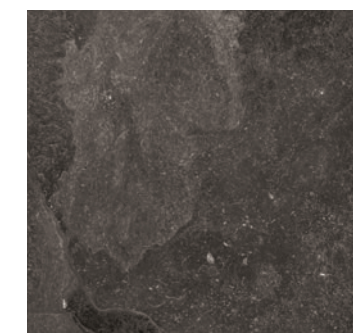
BLACK ROCK



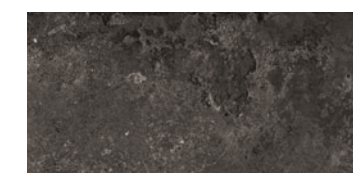
18"x36" rtt LGGR100



9"x36" rtt

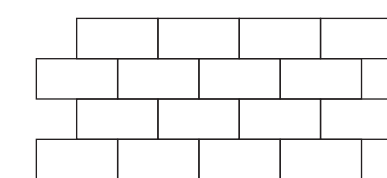


24"x24" rtt LGWR100



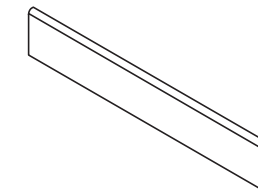
12"x24" rtt LGVR100

DECORS



MURETTO
12"x24"
ivory rock
taupe rock
grey rock
black rock

TRIMS



BULLNOSE
4"x24"
ivory rock
taupe rock
grey rock
black rock

LGWR120
LGWR130
LGWR110
LGWR100