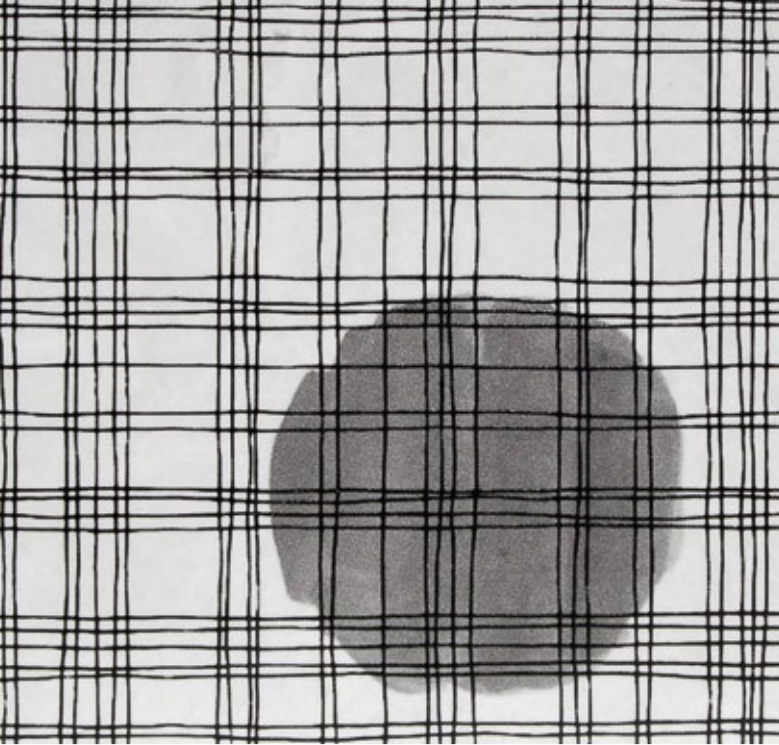


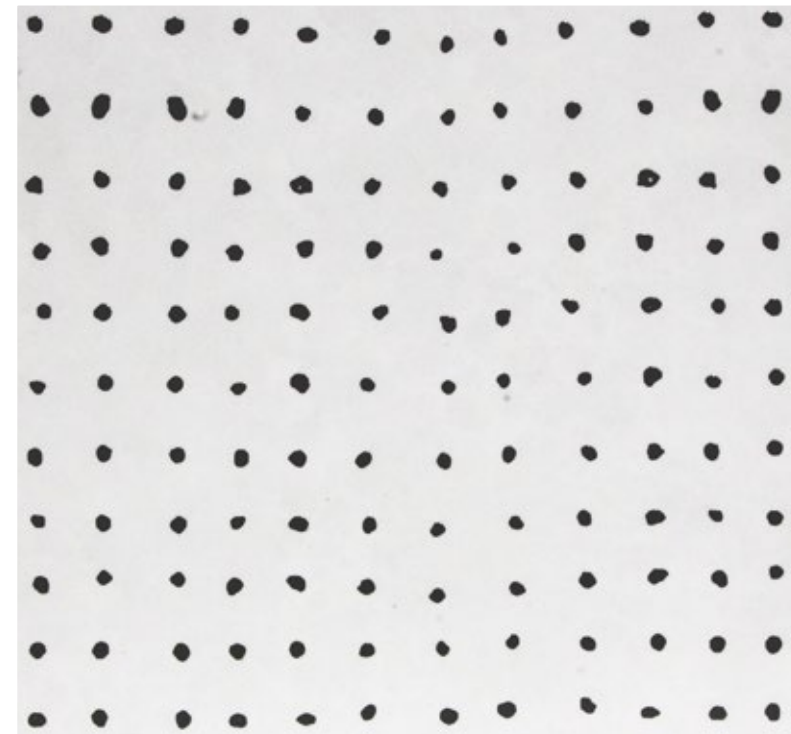
stone
marble

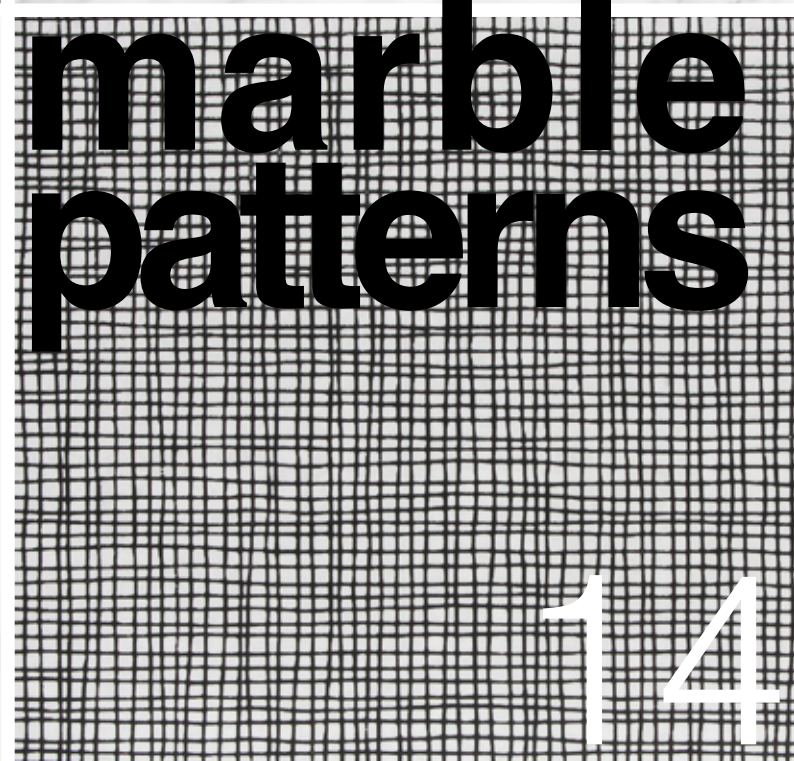
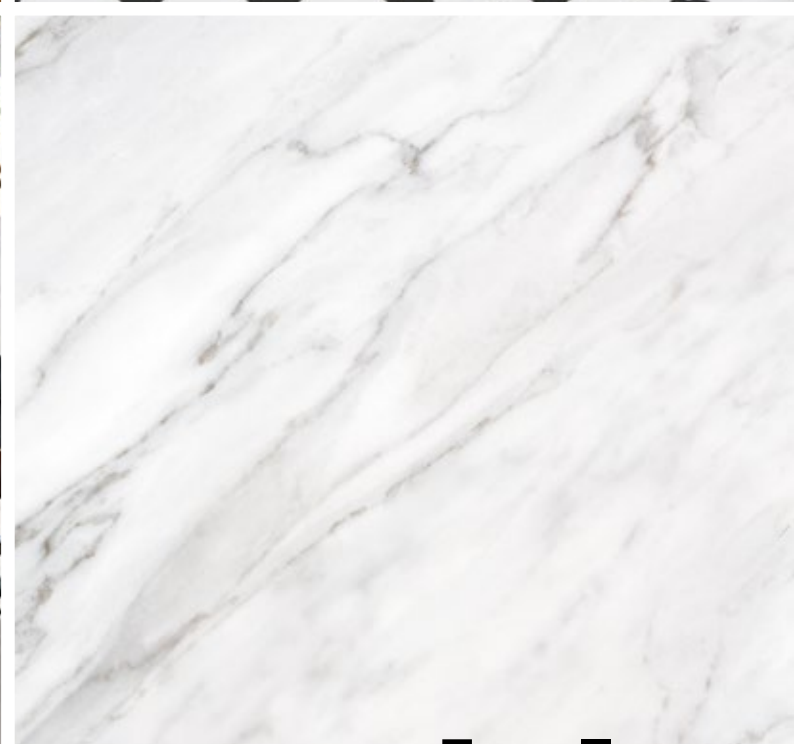
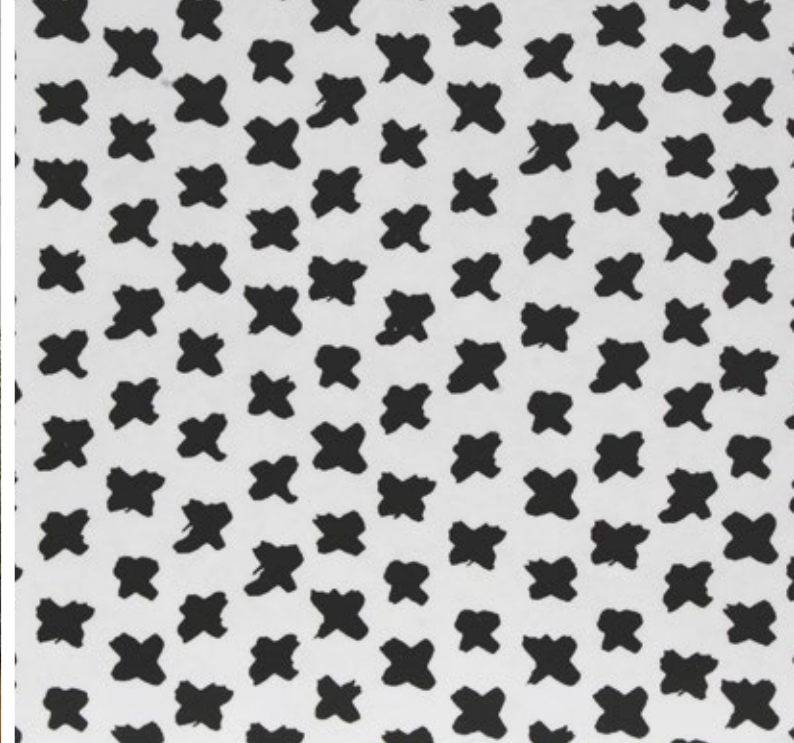
By Terratinta Ceramiche®

The Classic alongside the Modern.
With Stonemarble collection, we aimed to
bring together the beauty of a classic like
Carrara marble with the fresh, innovative
and revolutionary style of patterns decors.
A unique interpretation, never seen before.
Terratinta style.



white





**60x60/ 30x60/ 30x30/ 15x15/
5x5 mosaic, marble patterns,**
three finishes: a complete project.
Satin finish: a classic and soft one.
Suitable for floors and walls in resi-
dential and light commercial traffic.
Polished finish: shiny, like a mirror.
Suitable for floors and walls, only
for residential use.
Silk finish: so smooth, looking like
a real marble. Only for indoor wall
cladding.





€10,5

**stone
marble** *white*



60x60 polished









60x60 satin

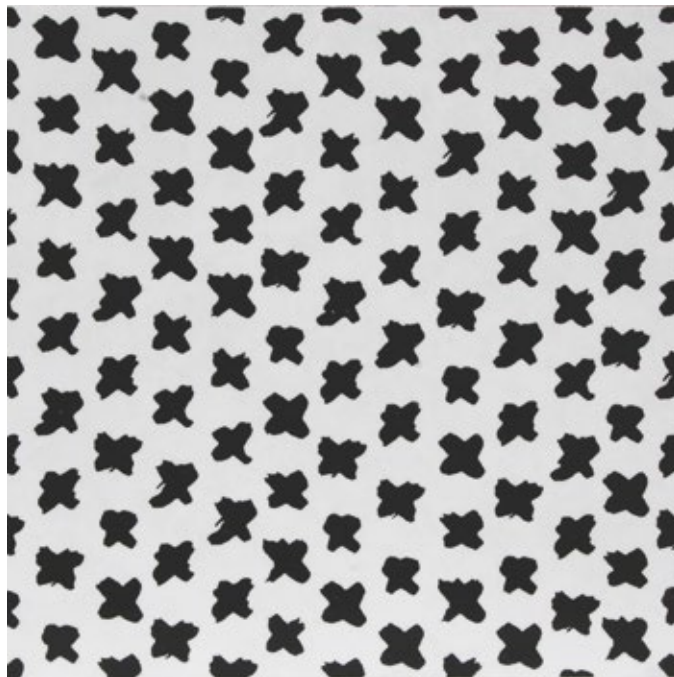


marble patterns

15x15 cm



aksel
01

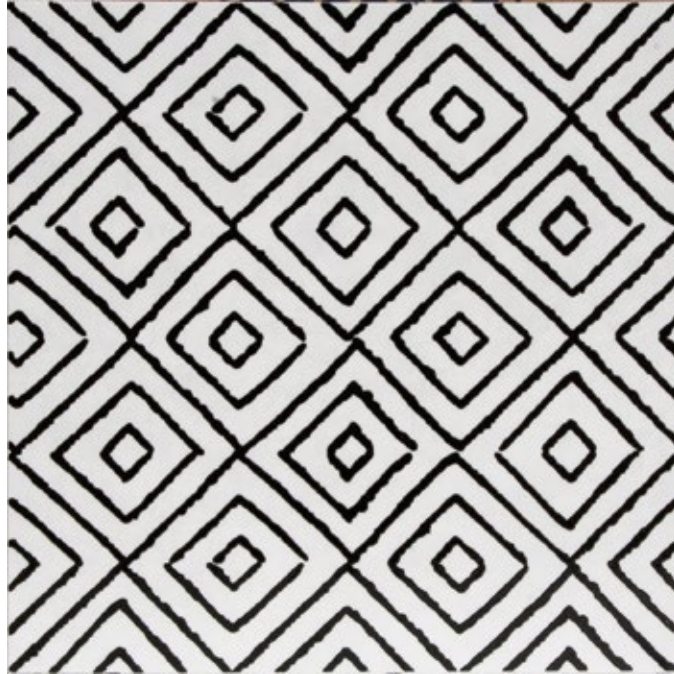


charlie
02

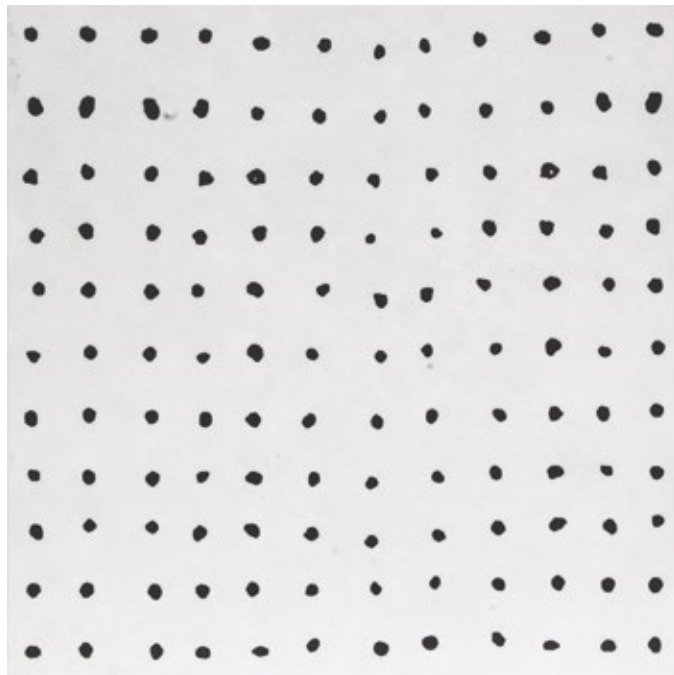
You can choose:

-a box with **1 of the 12 available patterns** (12 pcs/box - 0,27 sq.mt.)

-a box with the **12 patterns mix** (12 pcs/box - 0,27 sq.mt.)



erik
03



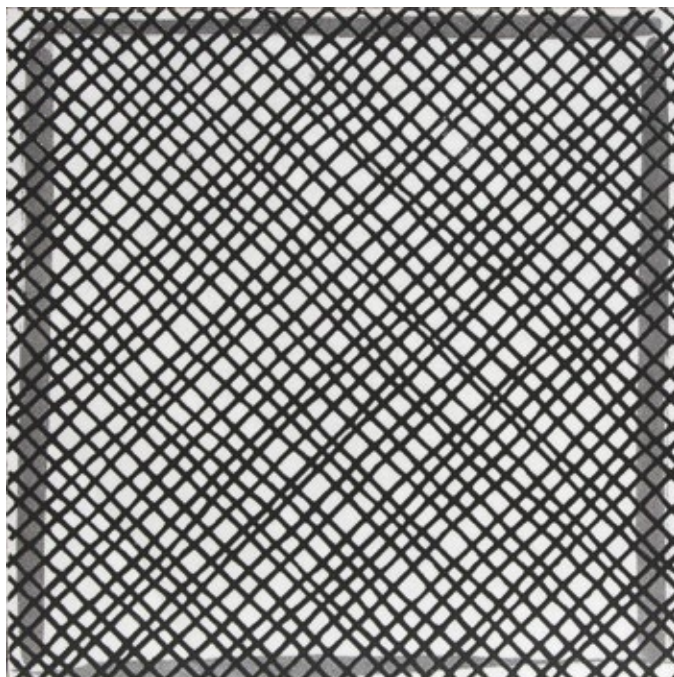
gabriel
04



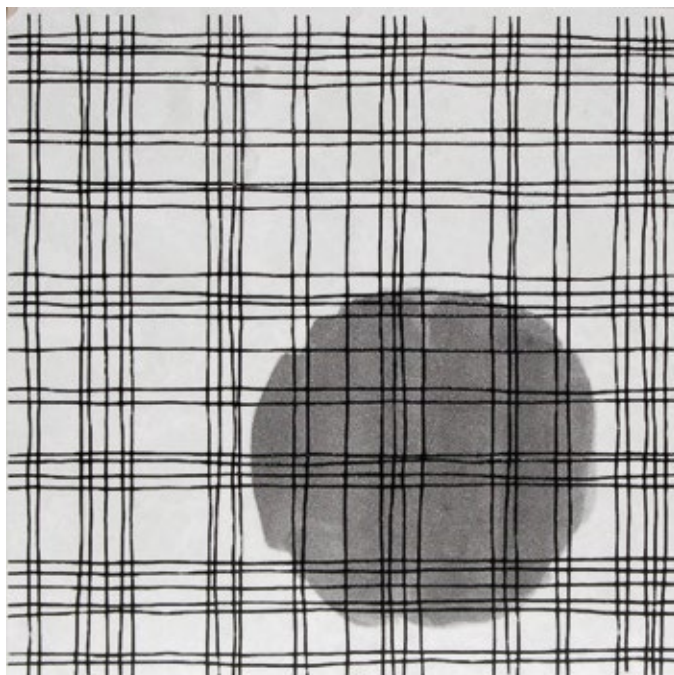
hugo
05



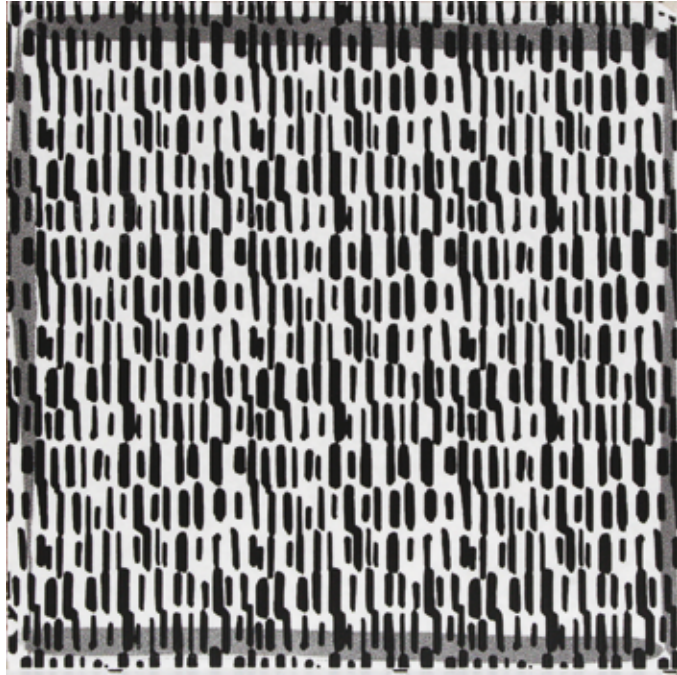
jakob
06



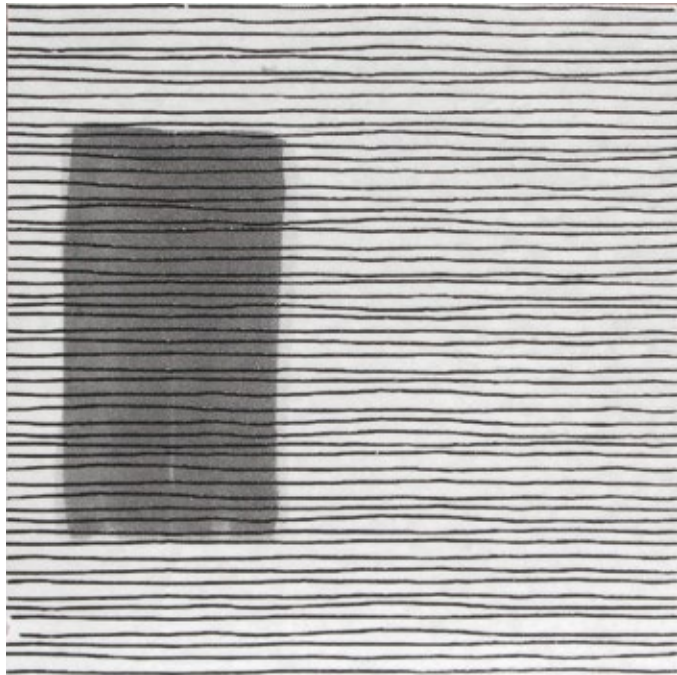
lucas
07



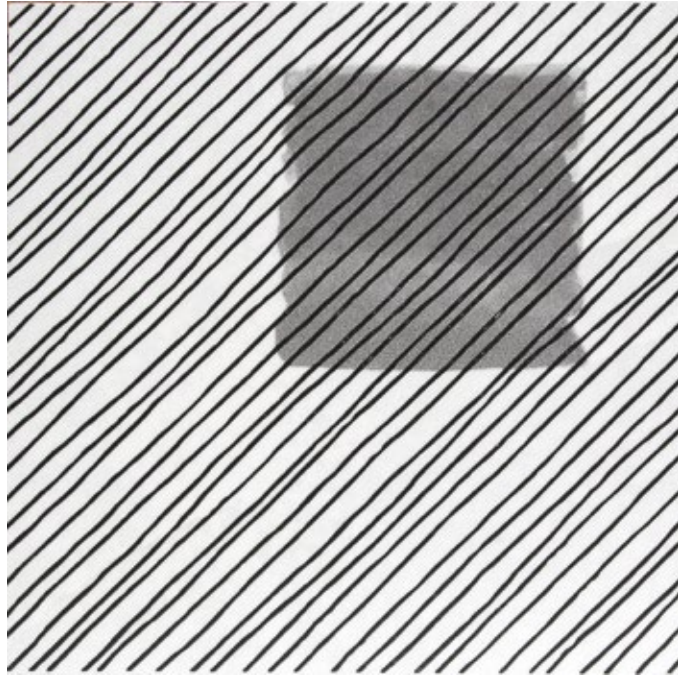
mathias
08



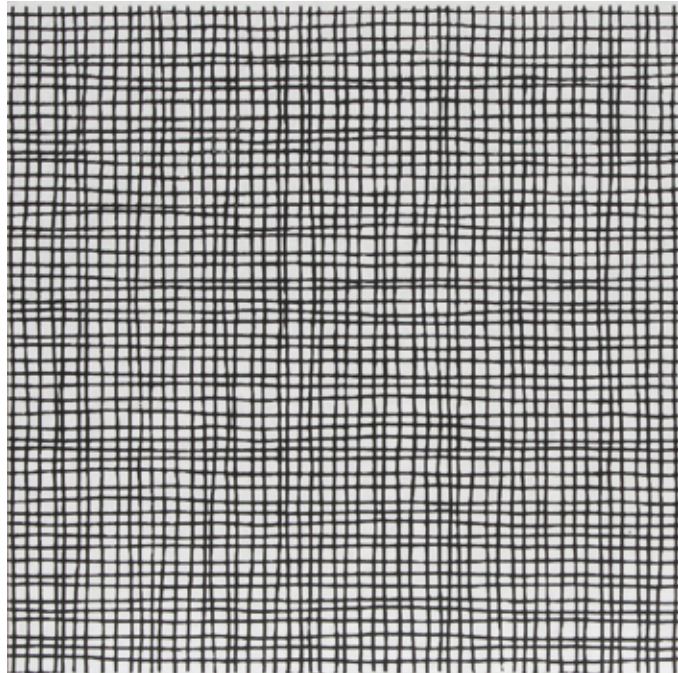
noah
09



ruben
10



theo
11



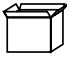






viggo
12



30x60 silk / 15x15 silk /
15x15 marble patterns mix



codes & packaging

								
			PIECES	SQ.MT.	KG	BOXES	SQ.MT.	KG
 60x60	satin	TTSMWH60SA	3	1,08	25,75	40	43,20	1.030
	polished	TTSMWH60P						
 30x60	satin	TTSMWH36SA	5	0,90	21,50	48	43,20	1.032
	polished	TTSMWH36P						
	silk	TTSMWH36SI						
 30x30	satin	TTSMWH30SA	11	1	22	30	30	660
 15x15	satin	TTSMWH15SA	44	1	23	48	48	1.104
	silk	TTSMWH15SI						
 15x15 marble patterns	satin		12	0,27	6	64	17,28	384
	aksel	TTSMWH01AK						
	charlie	TTSMWH02CH						
	erik	TTSMWH03ER						
	gabriel	TTSMWH04GA						
	hugo	TTSMWH05HU						
	jakob	TTSMWH06JA						
	lucas	TTSMWH07LU						
	mathias	TTSMWH08MA						
	noah	TTSMWH09NO						
	ruben	TTSMWH10RU						
	theo	TTSMWH11TH						
viggo	TTSMWH12VI							
marble patterns box mix	TTSMWHMIX15	12	0,27	6	64	17,28	384	

								
			PIECES	SQ.MT.	KG	BOXES	SQ.MT.	KG
 30x30 mosaic (chip 5x5)	satin	TTSMWHM5SA						
	polished	TTSMWHM5P	11	1	21	30	30	630
	silk	TTSMWHM5SI						
 skirting 7x60	satin	TTSMWHBSA	14	8,40ml	14,70	-	-	-
 step 30x60	satin	TTSMWHGSA	6	1,08	24,80	-	-	-

Mosaicnet Srl reserves the right to modify packaging details on individual orders or on particular colours and/or sizes.

technical features

TECHNICAL FEATURES GLAZED PORCELAIN STONEWARE CONFORMING TO EUROPEAN STANDARDS EN 14411 ISO 13006 APP. G (GRUPPO BIA GL CON E_B ≤ 0,5%)

CARATTERISTICHE TECNICHE GRÉS PORCELLANATO SMALTATO Conformi a Norme Europee EN 14411 ISO 13006 App. G (Gruppo Bia GL con E_B ≤ 0,5%)

TECHNISCHE EIGENSCHAFTEN GLASIERTES FEINSTEINZEUG Gemäß den EUROPÄISCHEN Normen EN 14411 ISO 13006 App. G (Gruppo Bia GL con E_B ≤ 0,5%)

CARACTERISTIQUES TECHNIQUES GRÉS CÉRAME ÉMAILLÉ Conformes aux Normes Européennes EN 14411 ISO 13006 App. G (Gruppo Bia GL con E_B ≤ 0,5%)

FULL BODY COLOURED
GLAZED PORCELAIN STONEWARE

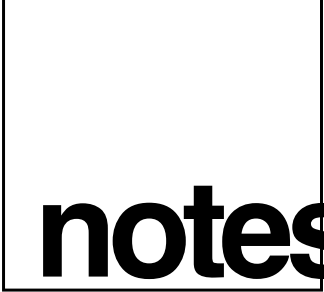
	TECHNICAL FEATURES CARATTERISTICHE TECNICHE TECHNISCHE DATEN CARACTERISTIQUE TECHNIQUE	TESTING METHOD METODICA DI PROVA PRÜFVERFAHREN NORME D'ESSAIS	REFERENCE STANDARD RIFERIMENTO NORMA STANDARDWERT RÉFÉRENCE NORME	TEST RESULTS VALORE PRODOTTO PRODUKT WERTE VALEUR PRODUIT
	Sizes Dimensioni Abmessungen Dimensions	EN ISO 10545-2	N _z 15cm • Length and width - Lunghezza e larghezza - Länge und Breite - Longueur et largeur ±0.6% (mm) ±2.0mm • Thickness - Spessore - Stärke - Epaisseur ±0.0 ±0.5 • Linearity - Retttilineità spigoli - Kantengeradheit- ±0.5 ±1.5 • Rectitude des arêtes • Wedging - Ortogonalità - Rechtwinkligkeit ±0.5 ±2.0 • Orthogonalité • Warpage - Planarità - Ebenföchigkeit-Planéité ±0.5 ±2.0 • Appearance: percentage of acceptable tiles, per lot Aspetto: percentuale di piastrelle accettabili nel lotto Oberflöchenbeschaffenheit: Prozentsatz der Fliesen, die den geforderten Eigenschaften entsprechen/Aspect: pourcentage de carreaux acceptables sur la fourniture totale 95% min. -	Compliant Conforme Erfüllt Conforme
	Water absorption Assorbimento d'acqua Wasseraufnahme Absorption d'eau	EN ISO 10545-3	E _B ≤ 0,5%	Compliant Conforme Erfüllt Conforme
	Modulus of rupture Resistenza alla flessione Biegezugfestigkeit Résistance à la flexion	EN ISO 10545-4	Min 35 N/mm ²	Compliant Conforme Erfüllt Conforme
	Breaking strenght Carico di rottura Bruchlast Charge de rupture		sp. > = 7,5 mm: min 1300 N	Compliant Conforme Erfüllt Conforme
	Abrasion resistance Resistenza all'abrasione Abriebbeständigkeit Résistance à l'abrasion	EN ISO 10545-7	classi 0-5	5 4 marble patterns
	Thermal expansion coefficient Coefficiente di dilatazione termica lineare Wärmeausdehnung Coefficient de dilatation thermique linéaire	EN ISO 10545-8	*Declared value Valore dichiarato Angegebener Wert Valeur déclaré	≤9 MK-1
	Thermal shock resistance Resistenza agli sbalzi termici Temperaturwechselbeständigkeit Résistance aux écarts de température	EN ISO 10545-9	*Pass according to iso 10545-1 Test superato in accordo con iso 10545-1 Test ueberstanden nach ISO 10545-1 Pv en accord avec norme en 10545-1	Resistant Resistente Widerstandsföchig Résistant
	Frost resistance Resistenza al gelo Frostbeständigkeit Résistance au gel	EN ISO 10545-12	*Pass according to iso 10545-1 Test superato in accordo con iso 10545-1 Test ueberstanden nach ISO 10545-1 Pv en accord avec norme en 10545-1	Resistant Resistente Widerstandsföchig Résistant
	Resistance to low concentrations of acids and alkali Resistenza a basse concentrazioni di acidi e alcali Beständigkeit gegen schwach konzentrierten Säuren und Laugen Résistance à des basses concentrations d'acides et bases	EN ISO 10545-13	*Declared value Valore dichiarato Angegebener Wert Valeur déclaré	From GLA to GLB Da GLA a GLB Von GLA bis GLB De GLA jusqu'à GLB
	Resistance to high concentrations of acids and alkali Resistenza ad alte concentrazioni di acidi e alcali Beständigkeit gegen stark konzentrierten Säuren und Laugen Résistance à des hautes concentrations d'acides et bases		*Declared value Valore dichiarato Angegebener Wert Valeur déclaré	From GHA to GHB Da GHA a GHB Von GHA bis GHB De GHA jusqu'à GHB
	Resistance to domestic chemicals and additives for swimming pools Resistenza ai prodotti chimici di uso domestico e agli additivi per piscina Beständigkeit gegen chemischen Haushaltsreiniger und Zusatzstoffe für Schwimmböder Résistance aux prod. chimiques d'usage domestique et additifs pour piscines		GB min.	GB MIN.
	Stain resistance of unglazed porcelain Resistenza alle macchie di piastrelle non smaltate Flöckenbeständigkeit von unglasierten Fliesen Résistance aux taches des carreaux non émaillés	EN ISO 10545-14	*Classe 3 min Gruppe 3 min. Classe 3 min	CLASSE 5
	Glaze crazing resistance Determinazione della resistenza al cavillo Widerstand gegen Haarriss von der Glasur Résistance aux taches	EN ISO 10545-11	Required Richiesta Gefordert Requise	Resistant Resistente Widerstandsföchig Résistant

* It's advisable to refer to Contract Division for all necessary guidelines to a correct use.
Si raccomanda di consultare Contract Division per le indicazioni necessarie al corretto utilizzo.
Zur korrekten Anwendung wird empfohlen mit unserem Contract Division Kontakt aufzunehmen.
Merci de consulter notre Contract Division pour les indications a un usage correct.



V2 MODERATE

The Polished and Silk finishes are the result of a special mechanical process and can manifest small dots or hollows as well as a non-uniform shine all over the surface. These particularities are to be considered as intrinsic features of the product which give them a more natural appeal.



notes

A series of horizontal dotted lines for writing notes, spanning the width of the page.

“Stay hungry, stay foolish”.

S. Jobs 1955-2011



PROJECT BY TERRATINTA MKTG LAB
PRINTED IN ITALY, JUNE 2016
TERRATINTA CERAMICHE® ALL RIGHTS RESERVED

