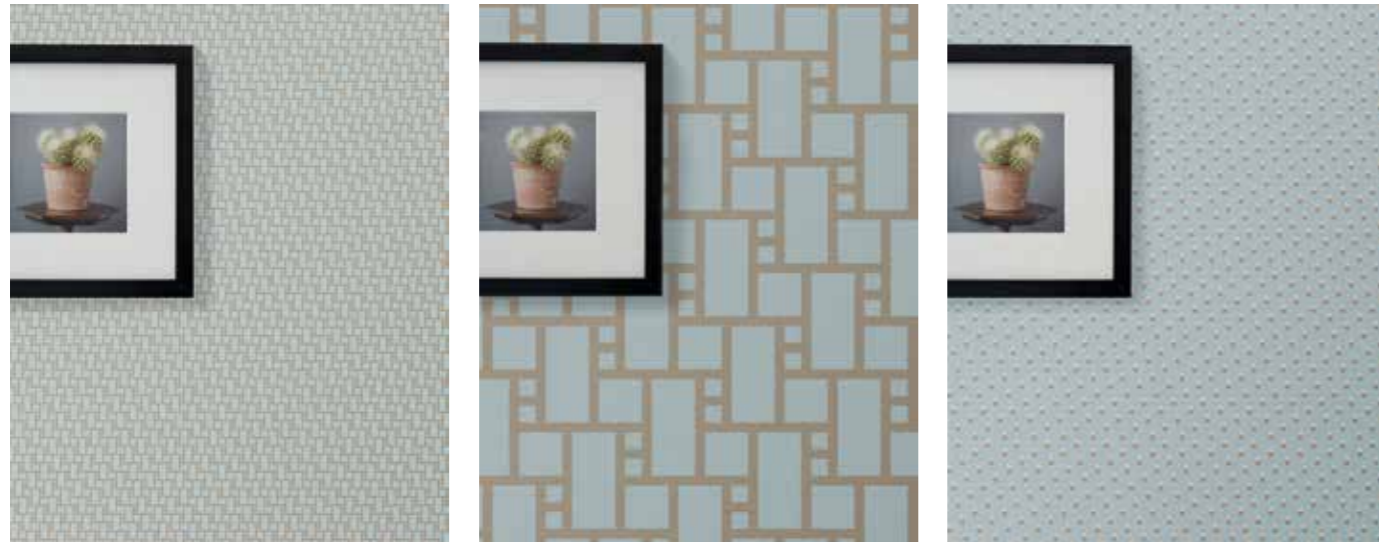


# Catalogue 2021



**Micro.**

# Micropapers



# Micropapers

ITA Trame geometriche di piccole dimensioni disegnano sulla carta suggestioni colorate.

ENG Small geometric textures draw colorful suggestions on paper.

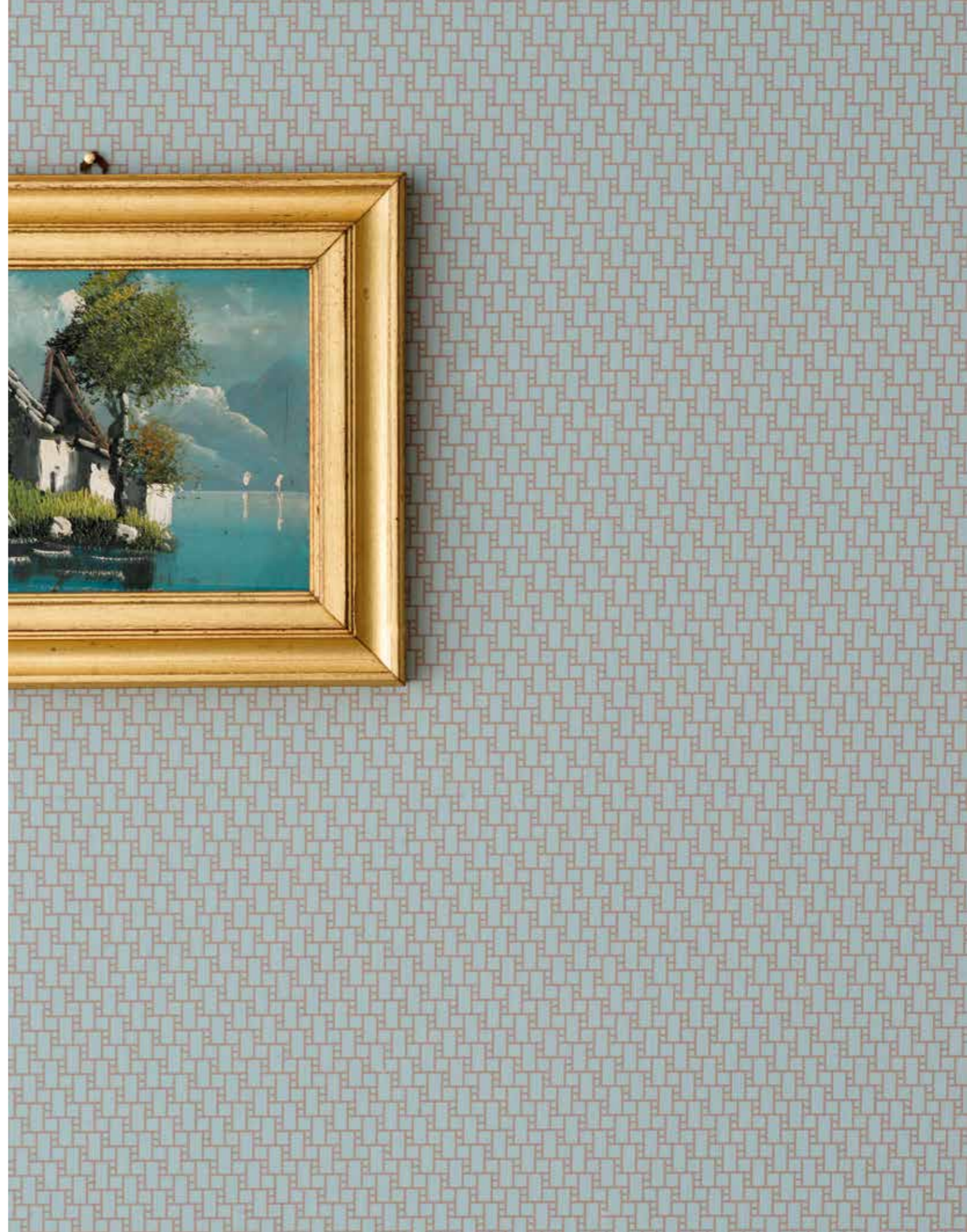


Micro.

Scheme: Spiral  
Color: White/Joist Sand



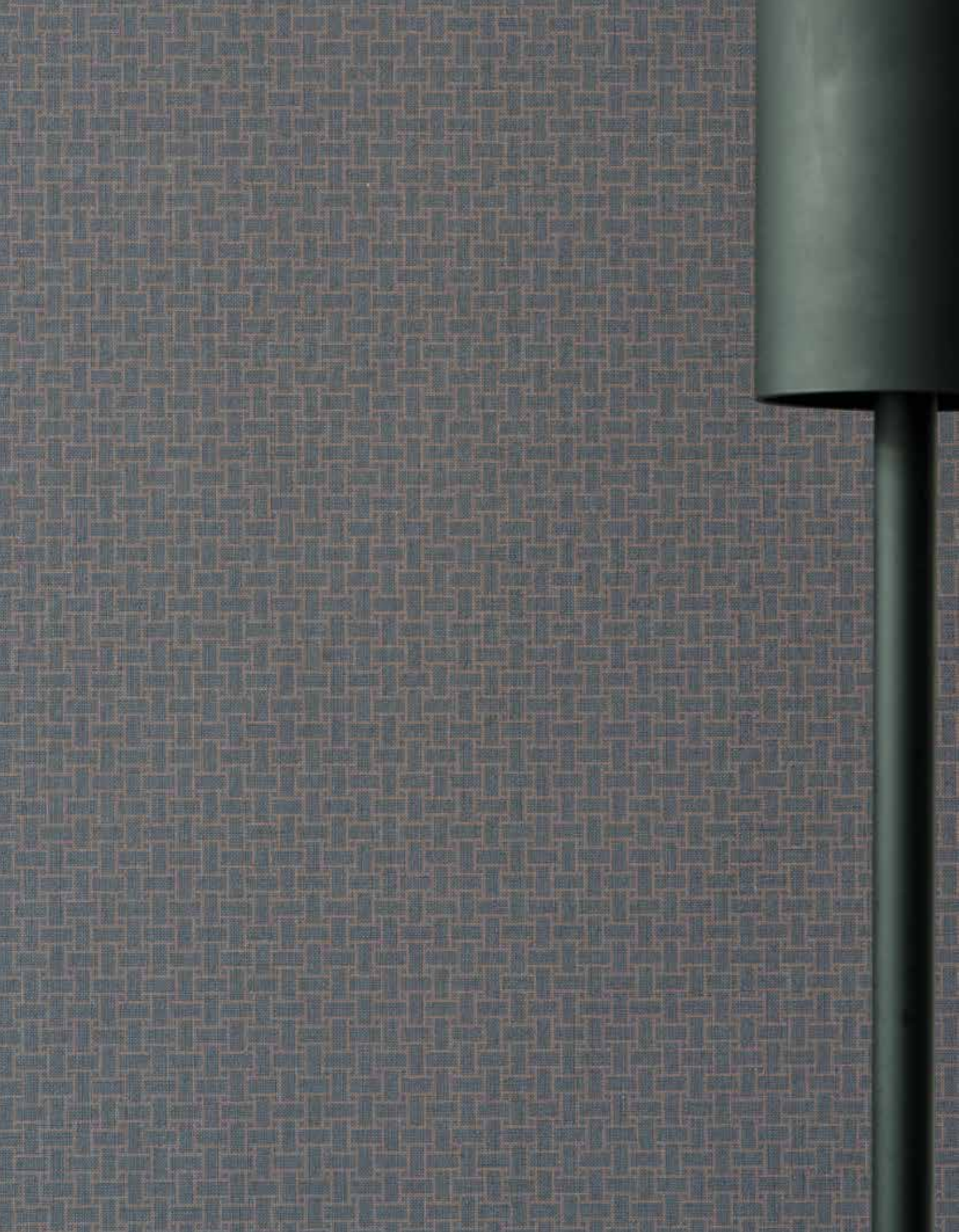
Scheme: Offset  
Color: Azure/Joint Mou





Micro.

Scheme: Modern  
Color: Coffee/Joint Black

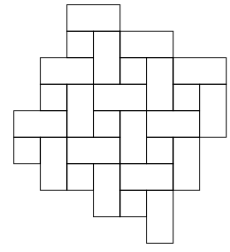


Micro.

Scheme: Ancient  
Color: Black/Joint Coffee

# Micropapers

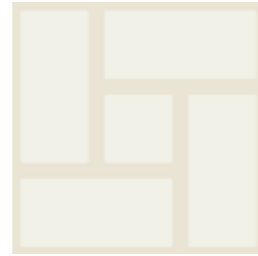
Design  
Roberto Cicchinè



**Spiral**  
48 x 300 cm  
19 x 118 inches



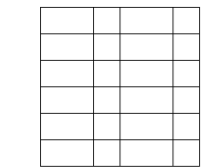
**MP01J02.901**  
Spiral  
White/Joint Sand



**MPX01J02.901**  
Spiral x4  
White/Joint Sand



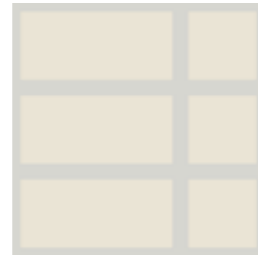
**MPS02R01.901**  
Spiral Mix  
White/Sand



**Knit**  
48 x 300 cm  
19 x 118 inches



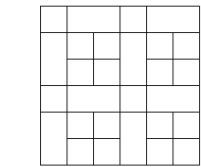
**MP02J03.902**  
Knit  
Sand/Joint Dust



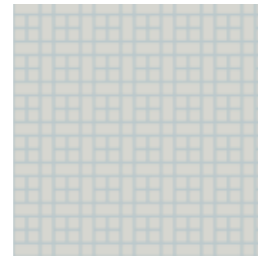
**MPX02J03.902**  
Knit x4  
Sand/Joint Dust



**MPS02S03R01R02.902**  
Knit Mix  
White/Sand/Dust



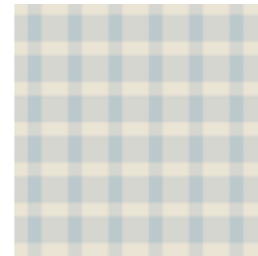
**Plaid**  
48 x 300 cm  
19 x 118 inches



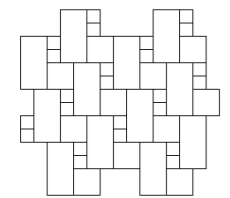
**MP03J10.903**  
Plaid  
Dust/Joint Azure



**MPX03J10.903**  
Plaid x4  
Dust/Joint Azure



**MPS03S10R02R10.903**  
Plaid Mix  
Sand/Dust/Azure



**Offset**  
48 x 300 cm  
19 x 118 inches



**MP10J06.904**  
Offset  
Azure/Joint Mou



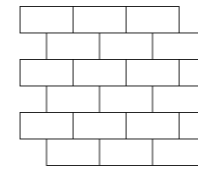
**MPX10J06.904**  
Offset x4  
Azure/Joint Mou



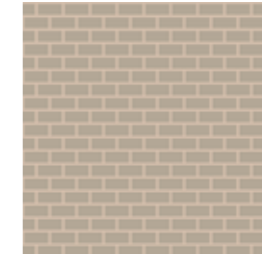
**MPD03D06S10R10.904**  
Offset Mix  
Dust/Mou/Azure

# Micropapers

Design  
Roberto Cicchinè



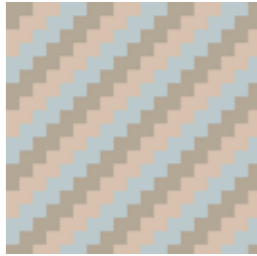
**Subway**  
48 x 300 cm  
19 x 118 inches



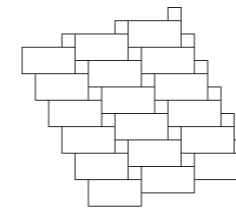
**MP06J10.905**  
Subway  
Mou/Joint Terracotta



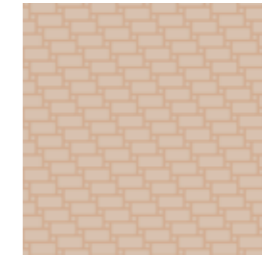
**MPX06J10.905**  
Subway x4  
Mou/Joint Terracotta



**MPR06R10R11.905**  
Subway Mix  
Mou/Azure/Terracotta



**Old**  
48 x 300 cm  
19 x 118 inches



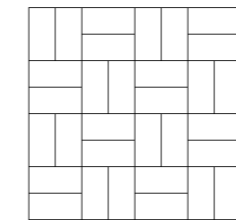
**MP10J11.906**  
Old  
Terracotta/Joint Cotto



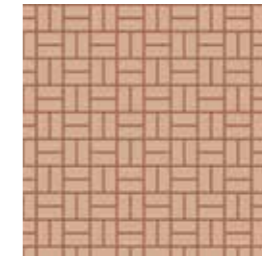
**MPX10J11.906**  
Old x4  
Terracotta/Joint Cotto



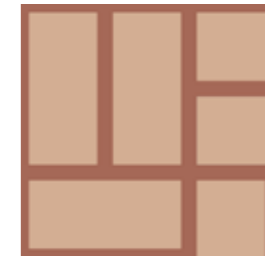
**MPD10R11.906**  
Old Mix  
Azure/Terracotta



**Basket**  
48 x 300 cm  
19 x 118 inches



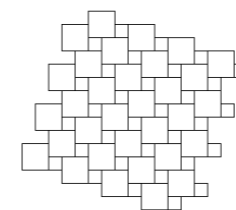
**MP11J13.907**  
Basket  
Cotto/Joint Klinker



**MPX11J12.907**  
Basket x4  
Cotto/Joint Terracotta



**MPR06R12R13.907**  
Basket Mix  
Mou/Cotto/Klinker



**Oddfellow**  
48 x 300 cm  
19 x 118 inches



**MP13J04.908**  
Oddfellow  
Klinker/Joint Grey



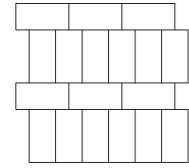
**MPX13J04.908**  
Oddfellow x4  
Klinker/Joint Grey



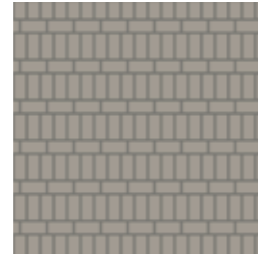
**MPD05S04S13.908**  
Oddfellow Mix  
Grey/Mud/Klinker

# Micropapers

Design  
Roberto Cicchinè



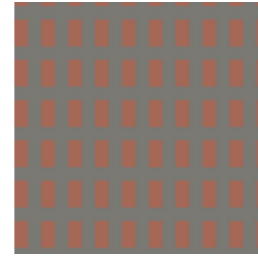
**Rough**  
48 x 300 cm  
19 x 118 inches  
100 x 300 cm  
40 x 118 inches



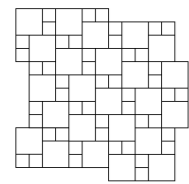
**MP04J05.909**  
Rough  
Grey/Joint Mud



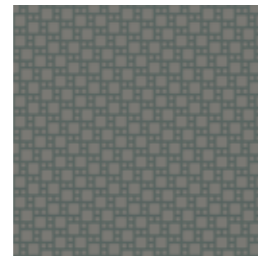
**MPX04J05.909**  
Rough x4  
Grey/Joint Mud



**MPD05S04S13.908**  
Rough Mix  
Mud/Klinker



**Double**  
48 x 300 cm  
19 x 118 inches  
100 x 300 cm  
40 x 118 inches



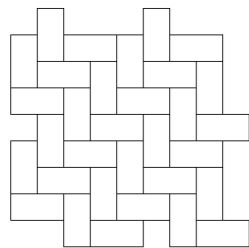
**MP05J09.910**  
Double  
Mud/Joint Graphite



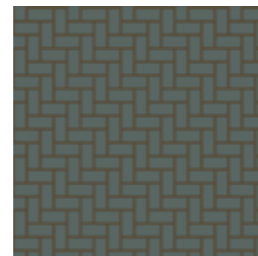
**MPX05J09.910**  
Double x4  
Mud/Joint Graphite



**MPD04D05S09.910**  
Double Mix  
Grey/Mud/Graphite



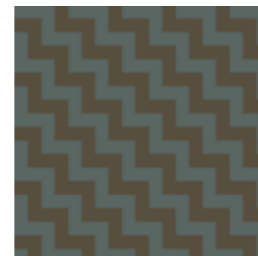
**Herringbone**  
48 x 300 cm  
19 x 118 inches  
100 x 300 cm  
40 x 118 inches



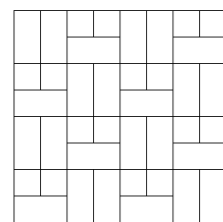
**MP09J08.911**  
Herringbone  
Graphite/Joint Coffee



**MPX09J08.911**  
Herringbone x4  
Graphite/Joint Coffee



**MPR08R09.911**  
Herringbone Mix  
Coffee/Graphite



**Modern**  
48 x 300 cm  
19 x 118 inches  
100 x 300 cm  
40 x 118 inches



**MP08J07.912**  
Modern  
Coffee/Joint Black



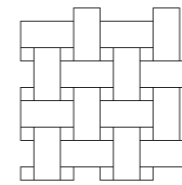
**MPX08J07.912**  
Modern x4  
Coffee/Joint Black



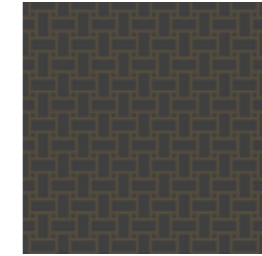
**MPS08S09R05R08.912**  
Modern Mix  
Grey/Coffee/Graphite

# Micropapers

Design  
Roberto Cicchinè



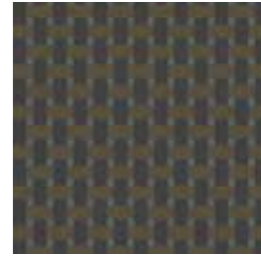
**Ancient**  
48 x 300 cm  
19 x 118 inches  
100 x 300 cm  
40 x 118 inches



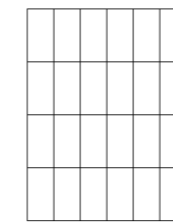
**MP07J08.913**  
Ancient  
Black/Joint Coffee



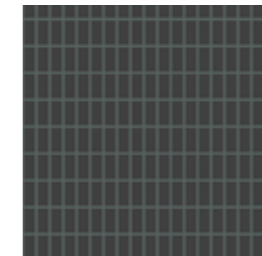
**MPX07J08.913**  
Ancient x4  
Black/Joint Coffee



**MPD09R07R08.913**  
Ancient Mix  
Black/Coffee/Graphite



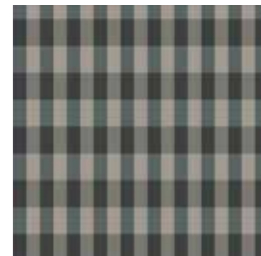
**Grid**  
48 x 300 cm  
19 x 118 inches  
100 x 300 cm  
40 x 118 inches



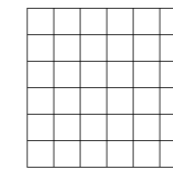
**MP07J09.915**  
Grid  
Black/Joint Graphite



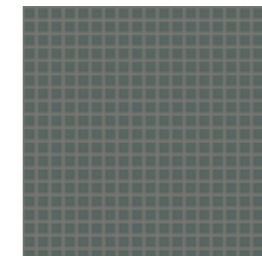
**MPX07J09.915**  
Grid x4  
Black/Joint Graphite



**MPR04R05R07R09.915**  
Grid Mix  
Grey/Mud/Black/Graphite



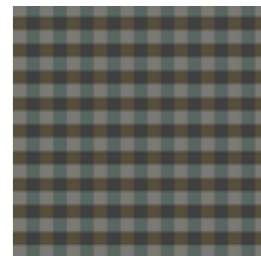
**Blends**  
48 x 300 cm  
19 x 118 inches  
100 x 300 cm  
40 x 118 inches



**MP09J05.05**  
Blends  
Graphite/Joint Mud



**MPX09J05.14**  
Blends x4  
Graphite/Joint Mud



**MPS07S08S09.20**  
Blends Mix  
Black/Coffee/Graphite



Caratteristiche tecniche

Technical features

# Micropapers

Design Roberto Cicchinè



Le soluzioni visive per l'arredamento Micropapers. vengono realizzate interamente in Italia e rispondono alle normative europee per la salute e la tutela dell'ambiente.

Il supporto é formato da due strati.

Il lato superiore é in vinile, il lato stampabile, e nel retro uno strato di TNT (tessuto non tessuto) che conferisce le seguenti caratteristiche al prodotto:

- Inassorbente e inodore;
- Lavabile con acqua e sapone neutro;
- Ignifugo;
- Elevata stabilità dimensionale durante le fasi di applicazione e asciugatura del prodotto;
- Facilità di montaggio e di eventuale rimozione del prodotto.

Per l'applicazione del materiale vinilico Micropapers. si richiede un sottofondo idoneo (liscio, poroso e trattato con un primer aggrappante) per evitare possibili contestazioni.

## Mapei. Glicovil

### DESCRIZIONE DEL PRODOTTO

Adesivo a base di amidi modificati per rivestimenti murali di ogni tipo.

### CAMPI D'IMPIEGO

Glicovil è idoneo per l'incollaggio a parete di rivestimenti murali di ogni tipo su supporto in carta

### SU

tutti i sottofondi assorbenti usati in edilizia come ad esempio:

- intonaci di cemento;
- malta bastarda;
- gesso, gesso cartonato.

### CARATTERISTICHE TECNICHE

Glicovil è un adesivo a base di amidi modificati, a spalmatura semplice che si presenta sotto forma di piccole scaglie bianche, facilmente disperdibili in acqua. Glicovil è facilmente applicabile a rullo o a spatola. Glicovil non è infiammabile e non contiene sostanze tossiche; pertanto può essere immagazzinato senza particolari accorgimenti e può essere utilizzato senza pericoli per la salute.

### PREPARAZIONE DELL'ADESIVO.

Agitare l'acqua con trapano a media velocitàe versare velocemente il contenuto del sacchetto.

Diluire Glicovilcon circa 5-7 litri di acqua (variabile a seconda della grammatura delrivestimento).

Lasciare riposare per 5 minuti e poi agitare nuovamente.

Glicovil è pronto in 10-15 minuti.

Dosaggio: 4-5 litri - Resa: 4-5 rotoli

Scheda tecnica  
Technical sheet



The visual solutions for the Micropapers. furnishings are carried out entirely in Italy and meet the European standards for health and environmental protection.

The support where the graphics subjects are printed is a vinyl with a layer of TNT (non-woven fabric) on the back that confers the following characteristics to the product:

- Non-absorbent and odourless;
- Washable with mild soap and water;
- Fire resistant;
- High dimensional stability during the application and drying stages of the product;
- Extremely easy to put up and take down if necessary.

For the application of the vinyl material Micropapers. a suitable substrate is required (smooth, porous and treated with a clinging primer) to avoid possible disputes.

## Mapei. Glicovil

### PRODUCT DESCRIPTION

Modified starch-based adhesive for all types of wall coatings.

### WHERE TO USE

Glicovil is suitable for bonding all kinds of paper- backed coating materials on walls.

### ON

all absorbent substrates normally used in the building industry, such as:

- cement render;
- lime-mortar render;
- gypsum and plasterboard.

### TECHNICAL SPECIFICATIONS

Glicovil is a modified starch-based adhesive which is easy to apply. It is available in the form of small, white flakes which dissolve quickly in water.

Glicovil is easy to apply using a roller or trowel.

Glicovil is not inflammable and does not contain hazardous substances. No special precautions need to be taken for storage purposes, and it may be used without any risk to health.

### PREPARATION OF THE ADHESIVE.

Mix the water with a medium-speed drill while quickly adding the contents of the sack.

Dilute Glicovil with approximately 5 to 7 lt. of water (the amount varies according to the weight of the coating).

Let the product stand for 5 minutes and then mix again.

Glicovil is ready in 10-15 minutes.

Dosage: 4-5 litres - Yield: 4-5 rolls

# Micropapers

Design Roberto Cicchinè



Micropapers. Istruzioni di montaggio

Per L'applicazione del materiale vinilico Micropapers. si richiede un sottofondo idoneo (liscio, poroso e trattato con un primer aggrappante) per evitare possibili contestazioni.

### 1 Controllo primo rullo

Misurare il primo rullo per assicurarsi che esso sia di 10 cm più lungo rispetto all'altezza della parete.

Questa abbondanza è necessaria a compensare eventuali fuori piombo della parete, e verrà tagliata una volta posata la carta.

### 2 Tracciare le guide

Con le istruzioni di posa davanti tracciate sul muro la fine di ogni rullo con una matita. Alle due estremità, sinistra e destra, deve rimanere un po' di abbondanza per compensare un eventuale fuori piombo della parete.

### 3 Preparare la colla

La colla è calcolata appositamente per la superficie da rivestire. Sulla busta è indicata la quantità d'acqua con cui diluire la colla. Versare la colla in un recipiente e poi aggiungere l'acqua. Mescolate in modo continuo per evitare il formarsi di grumi. Per un miglior risultato preparare 24h prima dell'utilizzo.

### 4 Applicare la colla

Utilizzando un rullo, stendete la colla sul muro in modo omogeneo per la larghezza di un telo.

### 5 Stendere i teli

Iniziando dal secondo (2°) telo, stendete i teli successivi, dall'alto verso il basso, utilizzando l'apposita spatola da tappezziere avendo cura di non rovinare la carta. Al termine del montaggio, tagliare le eccedenze utilizzando un cutter.

### 6 Pulire la parete

Con una spugna non abrasiva, ripulite da eventuali residui di colla con acqua.

Consigli per la posa  
Laying guide



Micropapers. Installation instructions

To avoid any possible complaints, a proper background base is required to install Micropapers. vinyl wall coverings (smooth, porous and treated with clinging primer).

### 1 Check the first roll

Measure the first roll to check 5 cm that it is 10 cm longer than the height of the wall. This excess is necessary to compensate if the wall is out of plumb, and will be trimmed once the paper has been applied.

### 2 Mark guides

With the application instructions in front of you, use a pencil to mark the end of each roll on the wall. There should be a little excess paper at the two ends – left and right – to compensate if the wall is out of plumb.

### 3 Preparing the adhesive

The quantity of adhesive has been specially calculated for the surface to be covered. The amount of water needed to dilute the adhesive is given on the pack. Pour the adhesive into a container and then add the water. Stir continuously to prevent the formation of lumps. For a better result prepare the adhesive 24H before its use.

### 4 Applying the adhesive

Using a roller, spread the adhesive evenly onto the wall for the width of one sheet.

### 5 Applying the sheets

Starting from the second (2nd) sheet, apply the subsequent sheets from top to bottom, using the papering spatula and taking care not to ruin the paper. After applying all the sheets, use a cutter to trim the excess.

### 6 Clean the wall

Clean off any excess glue using water and a non-abrasive sponge.

Product design and Photography:  
Roberto Cicchinè [robertocicchine.it](http://robertocicchine.it)

Rendering 3D: Reality  
Thanks to: Sbizzurà, Design? Studio  
Associato, Eusebi Arredamenti,  
Very Simple Kitchen,  
Fam. Malavolta Roberto  
Fam. Augello Luciano  
Ristorante "La Magnana"  
Koinema società Coop.Sociale  
Radice Quadrata, unopervolta, Mercatino  
Usato (San Benedetto del Tronto),  
Trullo "Resolana" Castellana a Grotte (BA)  
Lab36, M+T architetti - Uliveus  
Prospero Ristorante, Lo Studio,  
Koinema - Società Coop. Sociale,  
SSAM small artisan manufactures  
'Contekst Interior Architects'  
'Evenbeeld'.

All rights reserved ©

**Micro.** is a brand of  
Terratinta Group Srl SB

Terratinta Group Srl SB  
Via Viazza Il Tronco, 45  
41042 Fiorano Modenese MO  
ITALY

P IVA IT03197960366

+39 0536 911408  
[info@terratintagroup.com](mailto:info@terratintagroup.com)  
[info@progettomicro.it](mailto:info@progettomicro.it)

[www.terratintagroup.com](http://www.terratintagroup.com)  
[progettomicro.it](http://progettomicro.it)



