



IRIS U.S. Corporate Office  
1360 South Vernon St.  
Anaheim, CA 92805

Customer Service  
(800) 323-9906

IRISUS.COM



MADE IN THE U.S.A.



# BROOKLYN

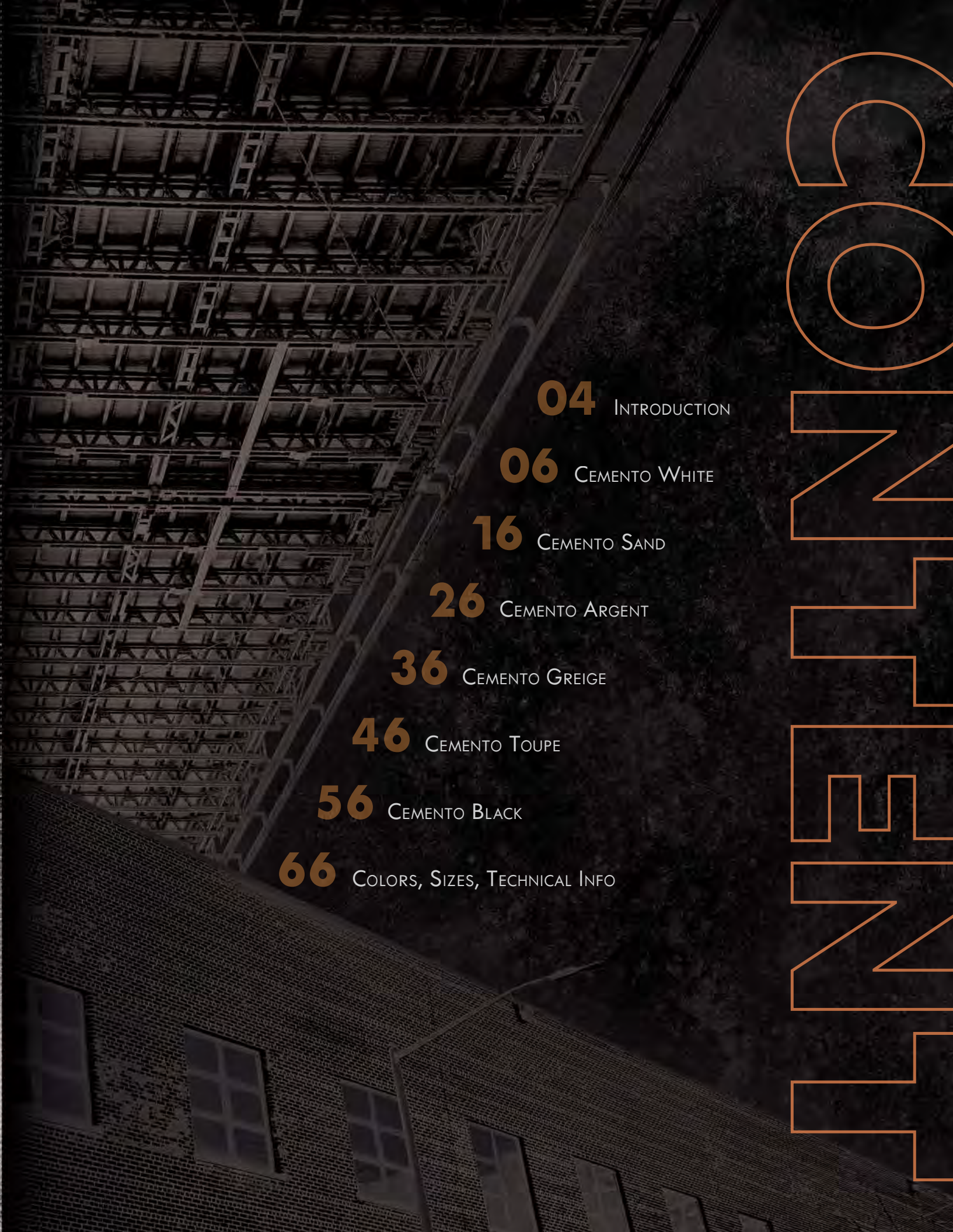
USIRISBROOK20





CREATED BY NATURE  
PERFECTED BY US





**04** INTRODUCTION

**06** CEMENTO WHITE

**16** CEMENTO SAND

**26** CEMENTO ARGENT

**36** CEMENTO GREIGE

**46** CEMENTO TOUPE

**56** CEMENTO BLACK

**66** COLORS, SIZES, TECHNICAL INFO

# CONCRETE



# BROOKLYN

**BROOKLYN** collection has been inspired by the industrial and artistic ambience of Brooklyn City, where different cultures and architectural styles generate worldwide buzz.

The soft cement look but rough and textured feel makes **BROOKLYN** perfect for any modern and contemporary interiors.

Strength and durability of the hard stone can be found behind the softness of six neutral colors. The smooth honed surface creates a sleek and clean appearance, but for more edgy and grunge interiors **BROOKLYN** also offers textured finish.

— Bring a part of **BROOKLYN** into your new architectural design...





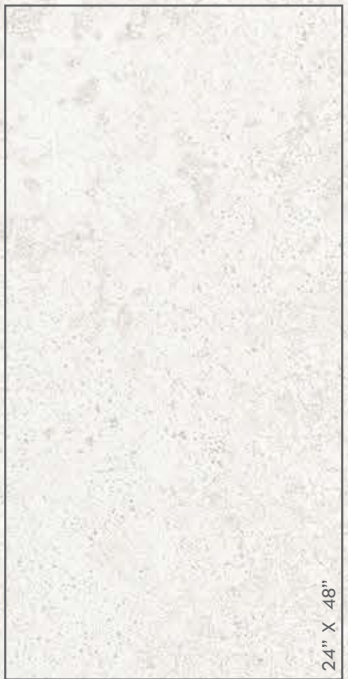
*"I once started out to walk around the world but ended up in Brooklyn,  
that Bridge was too much for me."*

— Lawrence Ferlinghetti





# CEMENTO WHITE



*Available in Honed and Textured R11 finish*















# CEMENTTO SAND



*"In every outthrust headland, in every curving beach, in every grain of sand there is the story of the Earth."*

— Rachel Carson



# CEMENTO SAND



12" X 24"



24" X 24"



24" X 48"

Available in Honed and Textured R11 finish



# ESCAPE FROM BROOKLYN











# CEMENTO

"In this world, only stone could claim to last."

— Cornelia Funke

# ARGENT





# CEMENTO ARGENT



12" X 24"



24" X 24"



24" X 48"

Available in Honed and Textured R11 finish











Wall | Cemento Argent 24" X 24" || Floor | Cemento Sand 12" X 24"





36

# CEMENTO

# GREIGE

"The more you spend your time in the ordinary streets,  
the more extraordinary things you will learn!"

— Mehmet Murat İldan





# CEMENTO GREIGE



12" X 24"



24" X 24"



24" X 48"

Available in Honed and Textured R11 finish



# ESCAPE FROM BROOKLYN













NEW YORK  
OR BROOKLYN  
LIFE

TOUPEE  
CEMENTO



"At all events there is in Brooklyn something that makes me feel at home."

— Mehmet Murat Ildan



# CEMENTO TOUPE



12" X 24"



24" X 24"



24" X 48"

*Available in Honed and Textured R11 finish*





1 50





Wall | Cemento Argent 12"X24" || Floor | Cemento Toupe 24"X48"



Wall | Cemento Toupe 12"X24" || Floor | Cemento Toupe 24"X48"







# CEMENTO BLACK



High St  
Brooklyn  
Bridge

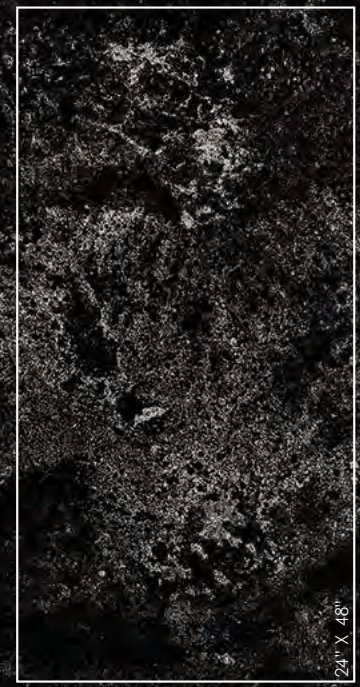


"I wish I had an invisible plane to take me home to Brooklyn,  
and I wouldn't have to ride the subway."

— Keri Russell



# CEMENTO BLACK



Available in Honed and Textured R11 finish













64





Wall | Cemento Sand 24"X48" || Floor | Cemento Black 24"X24"

# COLORS | SIZES | MOSAICS | TRIMS

HN HONED  
R11 TEXTURED

	12" x 24"	24" x 24"	24" x 48"
CEMENTO WHITE	HN IRG1224187	IRG2424187	IRG2448187
	R11 IRT1224187	IRT2424187	IRT2448187
CEMENTO SAND	HN IRG1224185	IRG2424185	IRG2448185
	R11 IRT1224185	IRT2424185	IRT2448185
CEMENTO ARGENT	HN IRG1224182	IRG2424182	IRG2448182
	R11 IRT1224182	IRT2424182	IRT2448182
CEMENTO GREIGE	HN IRG1224184	IRG2424184	IRG2448184
	R11 IRT1224184	IRT2424184	IRT2448184
CEMENTO TOUPE	HN IRG1224186	IRG2424186	IRG2448186
	R11 IRT1224186	IRT2424186	IRT2448186
CEMENTO BLACK	HN IRG1224183	IRG2424183	IRG2448183
	R11 IRT1224183	IRT2424183	IRT2448183



CEMENTO <b>WHITE</b> HONED MOSAIC 2" X 2"	CEMENTO <b>SAND</b> HONED MOSAIC 2" X 2"	CEMENTO <b>ARGENT</b> HONED MOSAIC 2" X 2"	CEMENTO <b>GREIGE</b> HONED MOSAIC 2" X 2"	CEMENTO <b>TOUPE</b> HONED MOSAIC 2" X 2"	CEMENTO <b>BLACK</b> HONED MOSAIC 2" X 2"
IRG12MO187	IRG12MO185	IRG12MO182	IRG12MO184	IRG12MO186	IRG12MO183

**BULLNOSE TRIM**  
4" X 24" Honed



CEMENTO <b>WHITE</b>	IRG424BT187
CEMENTO <b>SAND</b>	IRG424BT185
CEMENTO <b>ARGENT</b>	IRG424BT182
CEMENTO <b>GREIGE</b>	IRG424BT184
CEMENTO <b>TOUPE</b>	IRG424BT186
CEMENTO <b>BLACK</b>	IRG424BT183

**COVEBASE TRIM**  
6" X 12" Honed



CEMENTO <b>WHITE</b>	IRG612C187
CEMENTO <b>SAND</b>	IRG612C185
CEMENTO <b>ARGENT</b>	IRG612C182
CEMENTO <b>GREIGE</b>	IRG612C184
CEMENTO <b>TOUPE</b>	IRG612C186
CEMENTO <b>BLACK</b>	IRG612C183

\* When preparing the order, the surfaces are selected randomly, therefore, the continuity of patterns is not guaranteed.  
\* Color samples are for general reference only. Tile is made with all natural materials, therefore, is subject to variation in color and/or texture.



# TECHNICAL INFORMATION

PHYSICAL PROPERTIES	ASTM TEST	INDUSTRY STANDARDS	IRIS US RESULTS
Water Absorption	C373	Impervious < 0.5%	≤ 0.1%
Thickness Dimension	C499	Range ± 0.04 Inc. Max.	≤ ± 0.04 Inc.
Facial Dimension	C499	± 0.25 %	≤ ± 0.25%
Warpage Average Diagonal	C485	± 0.40 %	≤ ± 0.40%
Warpage Average Edge	C485	± 0.40 %	≤ ± 0.40%
Wedging	C502	± 0.25 %	≤ ± 0.25%
Bond Strength	C482	≥ 50 psi	≥ 200 psi
Breaking Strength	C648	≥ 250 lbf	≥ 400 lbf
Hardness (MOHS)	Scratch Test (No regulated)	Range 0 – 10	≥ 7
Visible Abrasion Resistance for Glaze Tiles	C1027	No Requirement, Range 0 – 5	Class 4
Frost Resistance	C1026	No sample must show alterations to surface	No evidence of Damage
Chemical Resistance	C650	No Requirement, Range E – A	Class A
Stain Resistance	C1378	No Requirement, Range E – A	Class A*
DCOF – Honed	BOT 3000	≥ 0.42*	≥ 0.50
DCOF – R11 Textured	BOT 3000	≥ 0.42*	≥ 0.65
Aesthetic Classification	Visual Evaluation Shade & Textures	No Requirement, Range V0 – V4	V2

\* DCOF (Coefficient of Friction): all values are given for Matte or Honed material. No values are given for Polished material. The above information is a subject to change. Individual product testing can be conducted by request.

PACKAGING	12" x 24"	24" x 24"	24" x 48"	MOSAICS 2"x2" on 12"x12" sheet	BULLNOSE TRIM 4"x24"	COVEBASE TRIM 6"x12"
Box/Pieces	8	4	4	5	16	8
Box/Sq. Ft	15.50	15.50	31.00	4.84	10.33	3.88
Pallet/Box	32	32	20	—	—	—
Pallet/Sq. Ft	496.00	496.00	620.00	—	—	—
Thickness (mm)	8	8	8	8	8	7.5
Weight Lb/Sq.Ft.	3.55	3.55	3.83	3.55	2.00	1.70

Due to the paper finish and the printing settings (or your screen settings if viewed digitally), it is normal to see a slight difference in the colors and textures shown on the images in the catalogue, with the actual colors and textures of the product.