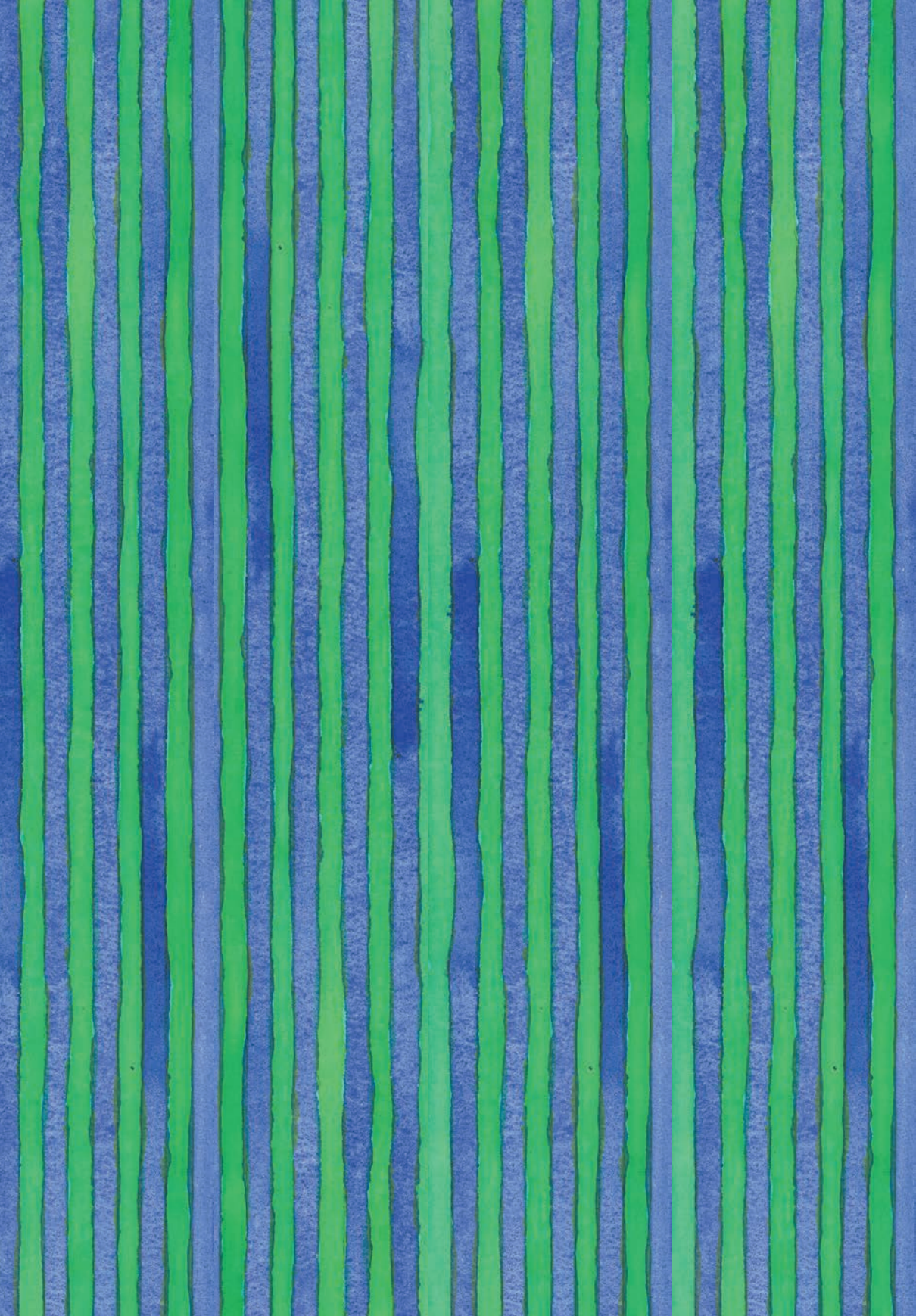




Wallpaper

**020** style'editions



# **\_020** **styl'editions**

Wallpaper

**S-Vinyl** – Larghezza rotolo / Roll width 50 cm/19.6"

**S-Acoustic** – Larghezza rotolo/Roll width 65 cm/25.6"

**S-Fiberglass** – Larghezza rotolo / Roll width 95 cm/37.4"

## A new language

Wallcoverings as a tangible instrument, and a graphic sign as a linguistic tool.

**Styl'editions** breaks the rules by turning the world of wallpaper upside down and inside out, bringing the attention to the essential graphic trait, to the color and the emotional pattern. The collections are revolutionary, visually surprising, narrated in a new style in method and creativity.

The versatility of the material and the achieved production dynamism make countless furnishing solutions possible, providing the client with endless possibilities and boundless freedom.

Empirical research methods combined with cutting-edge technologies, high craftsmanship and artistic sensibility are the ingredients for proposals which offer innovative collections for creative minds and end users seeking unique expressions for living spaces, offices and hospitality fields.

**Styl'editions** offers a tailored design and a production without constraints for unique projects, franchises, accommodation facilities.

**Styl'editions** is a new brand proposed by **Stylgraph**, a leading Company and reliable partner of the most important flooring and upholstery companies in the world, designing surfaces with over 30 years of experience.

The synergy between **Stylgraph's** long-standing experience in surface design and the creative management of **Gumdesign** offers an in-motion catalogue, based on insight and research of raw materials, color and graphic.

The catalogue contains collections created by designers, graphic designers, illustrators and artists involved by **Gumdesign**.

**Styl'editions** offers eco-friendly wallpapers, inks and printing methods, able to guarantee functionality, hygiene and at the same time great handling practicality, satisfying the most demanding clients and professionals.

## Un nuovo linguaggio

La carta da parati come mezzo materiale, il segno grafico come strumento linguistico

Le carte da parati **Styl'editions** rompono gli schemi e capovolgono il mondo del rivestimento a parete ponendo l'attenzione sul tratto essenziale, il colore, il pattern emozionale. Sono collezioni rivoluzionarie, visivamente sorprendenti, narrate con un linguaggio nuovo per metodo e creatività.

La versatilità del materiale trattato ed il dinamismo produttivo raggiunto rendono possibili innumerevoli soluzioni di arredo, fornendo al cliente una libertà senza confini.

Un profondo lavoro di ricerca abbinato a tecnologie di ultima generazione, alto artigianato e sensibilità artistica restituiscono collezioni sempre nuove per offrire ai creativi ed al cliente finale proposte innovative, uniche per gli spazi abitativi, gli uffici ed il contract.

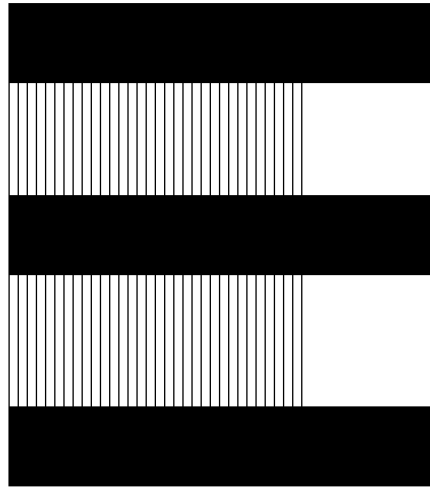
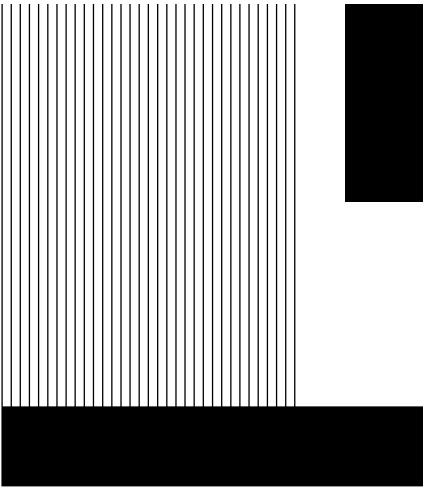
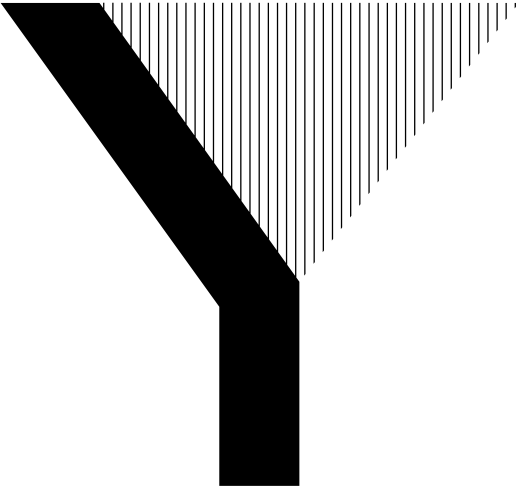
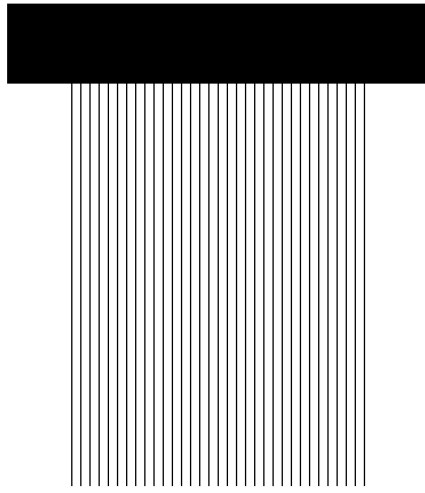
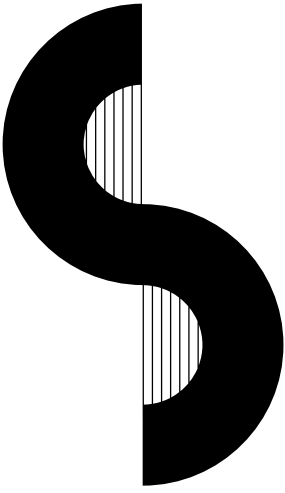
**Styl'editions** offre una progettazione personalizzata ed una produzione senza vincoli per progetti unici, franchising, strutture ricettive.

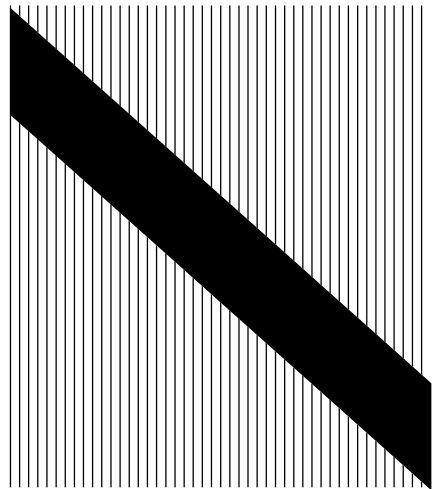
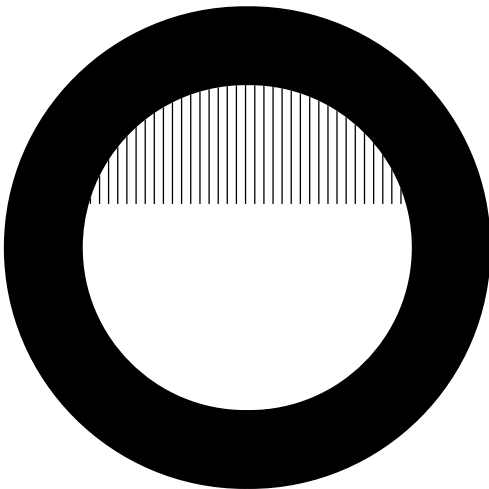
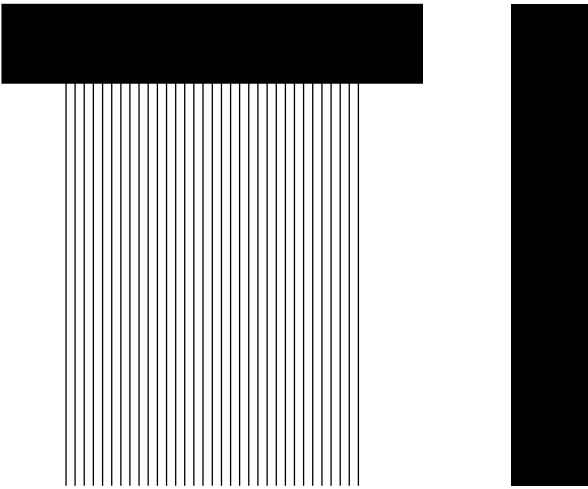
**Styl'editions** è il nuovo brand proposto da **Stylgraph**, azienda leader nella progettazione di superfici ricca di un'esperienza trentennale come partner delle più importanti aziende di flooring e rivestimento d'interni del mondo.

La sinergia tra l'esperienza decennale di **Stylgraph** nel campo del design di materiali e la direzione creativa di **Gumdesign** propone un catalogo in continuo sviluppo, basato su ricerca e sensibilità per la materia prima, il colore ed il segno grafico.

Il catalogo raccoglie le collezioni sviluppate da grafici, designer, illustratori ed artisti coinvolti da **Gumdesign**.

**Styl'editions** utilizza carte da parati, inchiostri e metodi di stampa totalmente ecologici ed ecosostenibili, in grado di garantire funzionalità, igiene ed al tempo stesso grande praticità di movimentazione, per soddisfare anche la clientela ed i professionisti più esigenti.





# ISTINTI

P. 008

DESIGN  
**gumdesign**

# APPUNTI

P. 020

DESIGN  
**gumdesign**

# MODULO

P. 028

DESIGN  
**gumdesign**

# TRITTICO

P. 034

DESIGN  
**Massimo Giacon**

# IL VIAGGIATORE

P. 040

DESIGN  
**Paolo Ulian**



# TESSILE / C

DESIGN  
gumdesign

P. 044

# DIECIPERDIECI / C

DESIGN  
gumdesign

P. 048

# LUNA / C

DESIGN  
gumdesign

P. 052

# SOLE / C

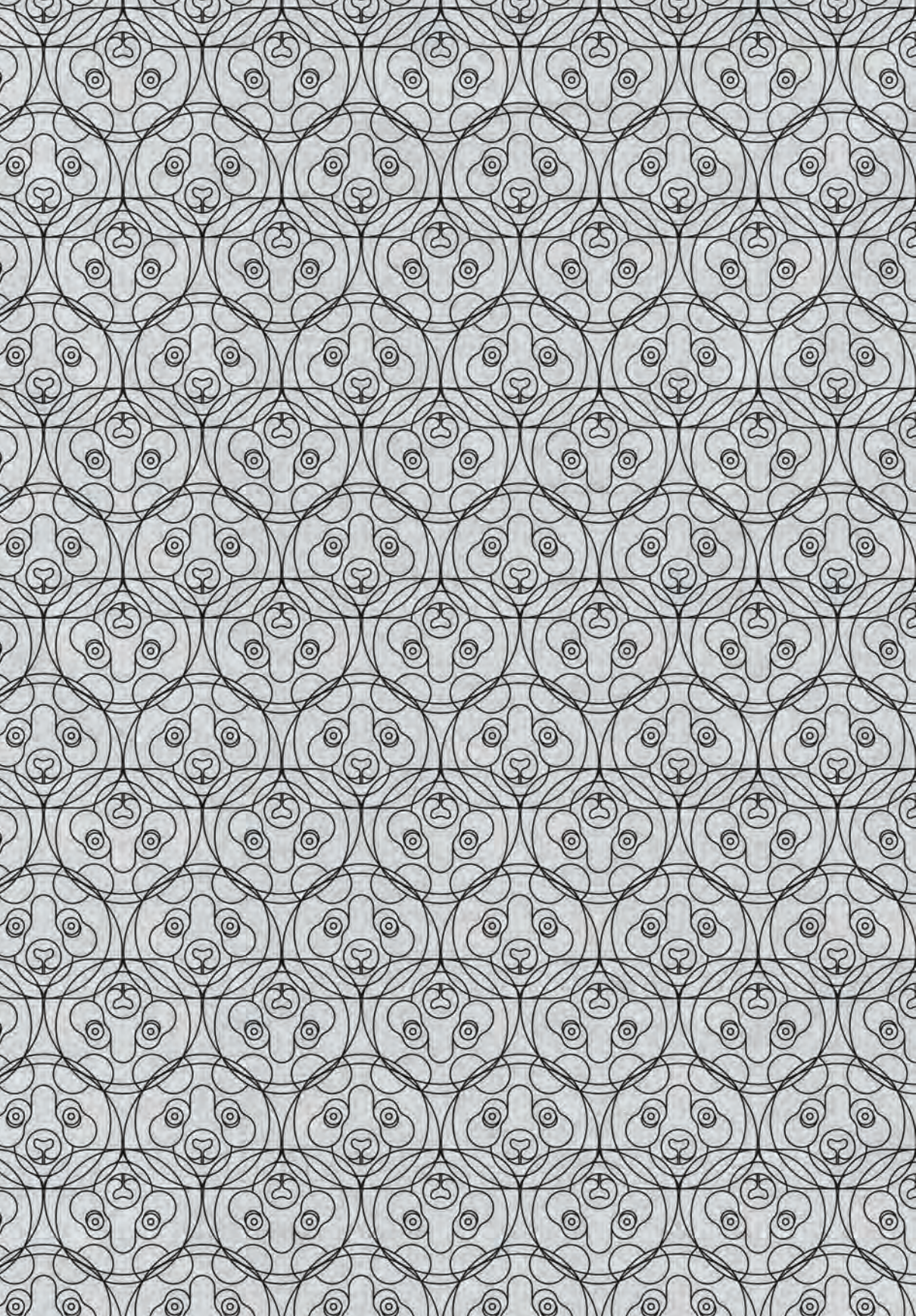
DESIGN  
gumdesign

P. 056

# SOGNI E FAVOLE

DESIGN  
Francesco Musante

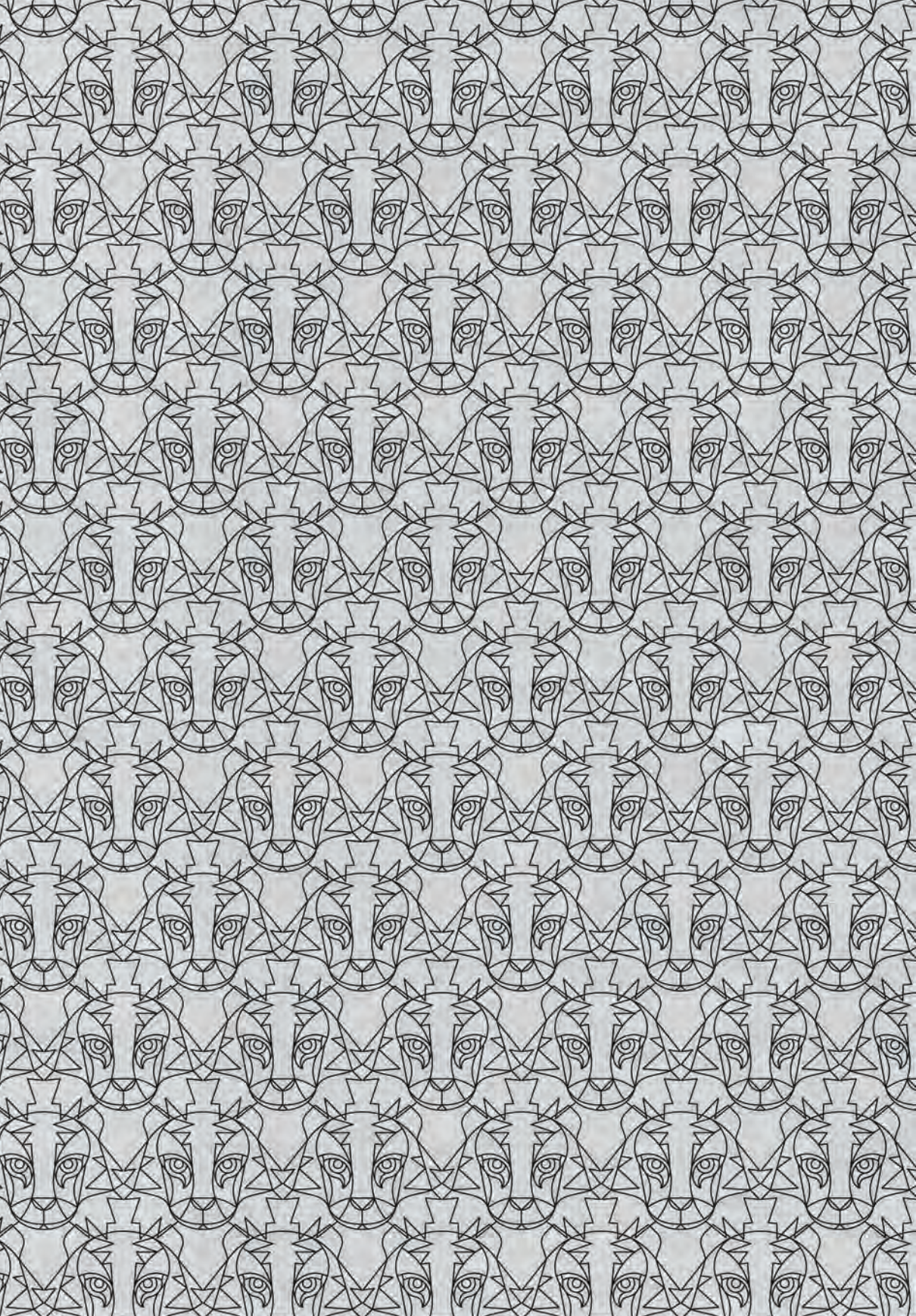
P. 060



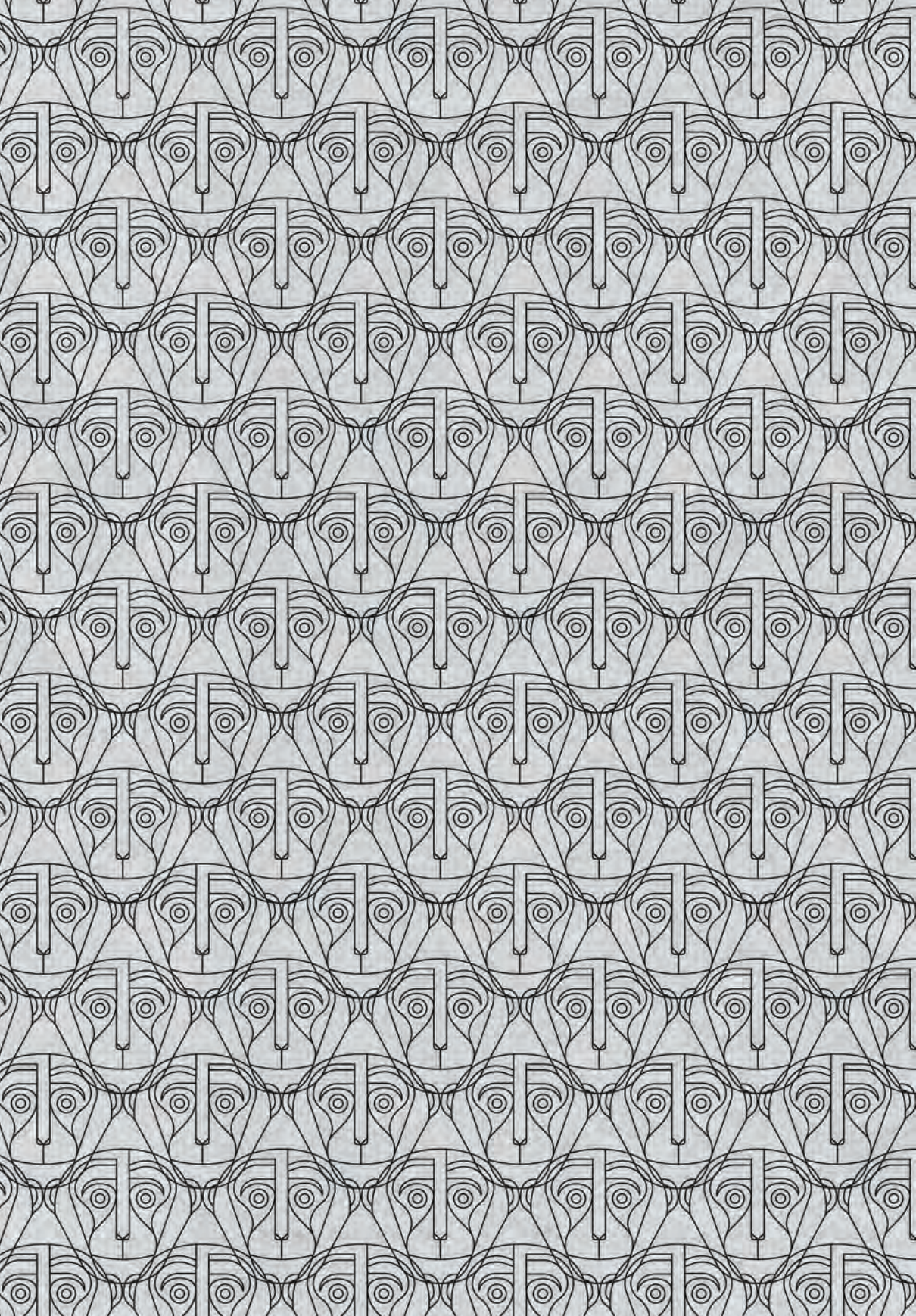






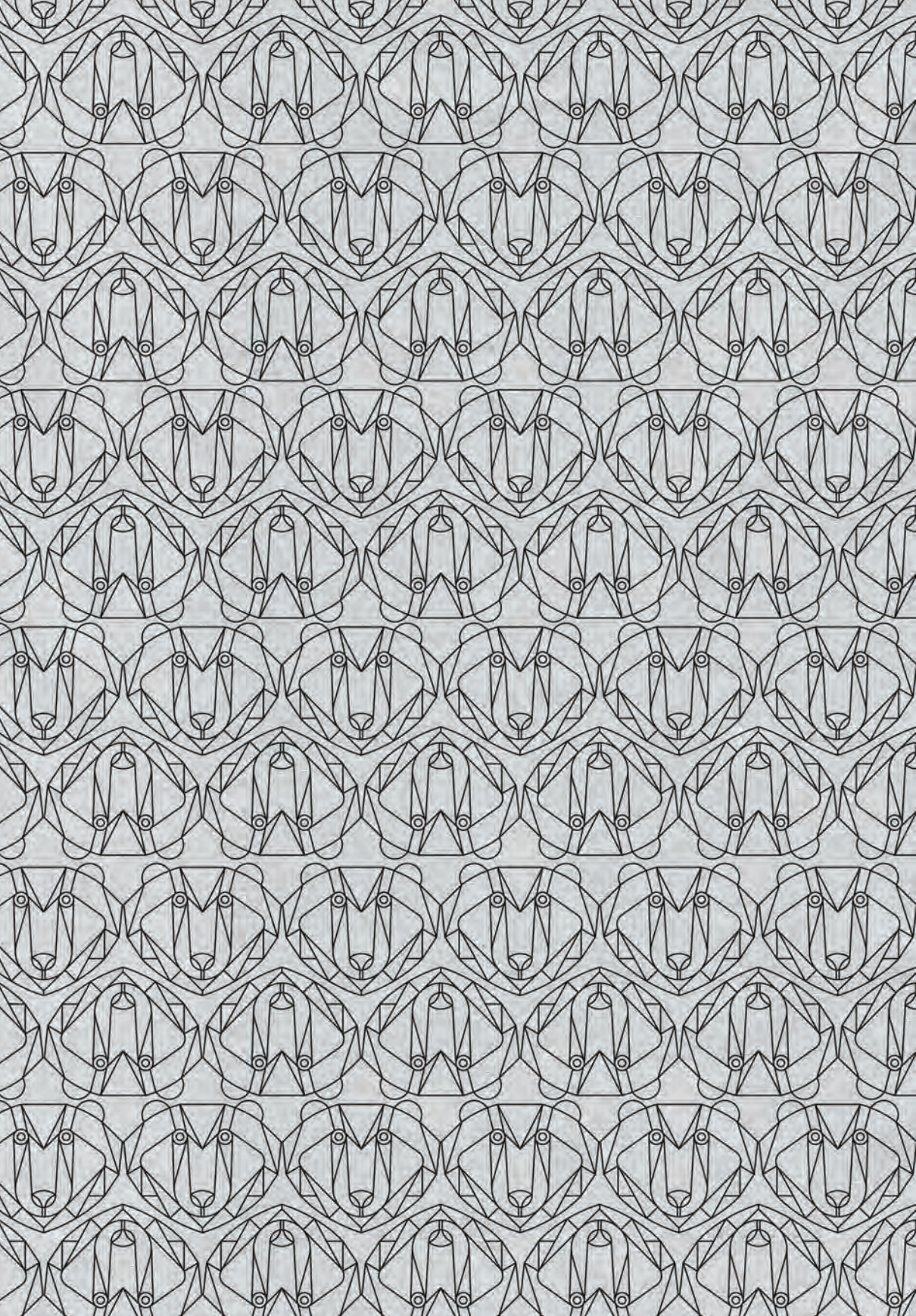










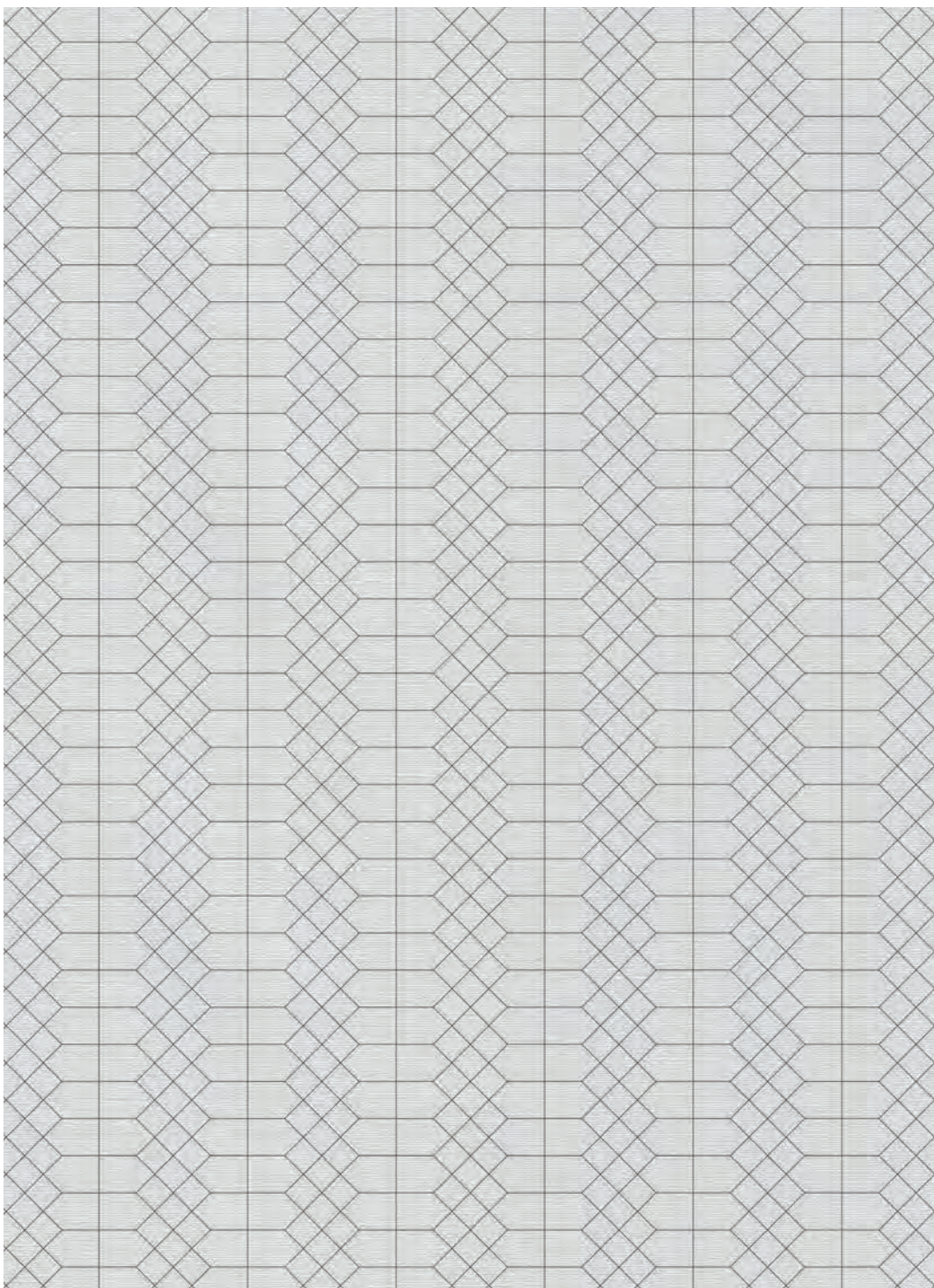


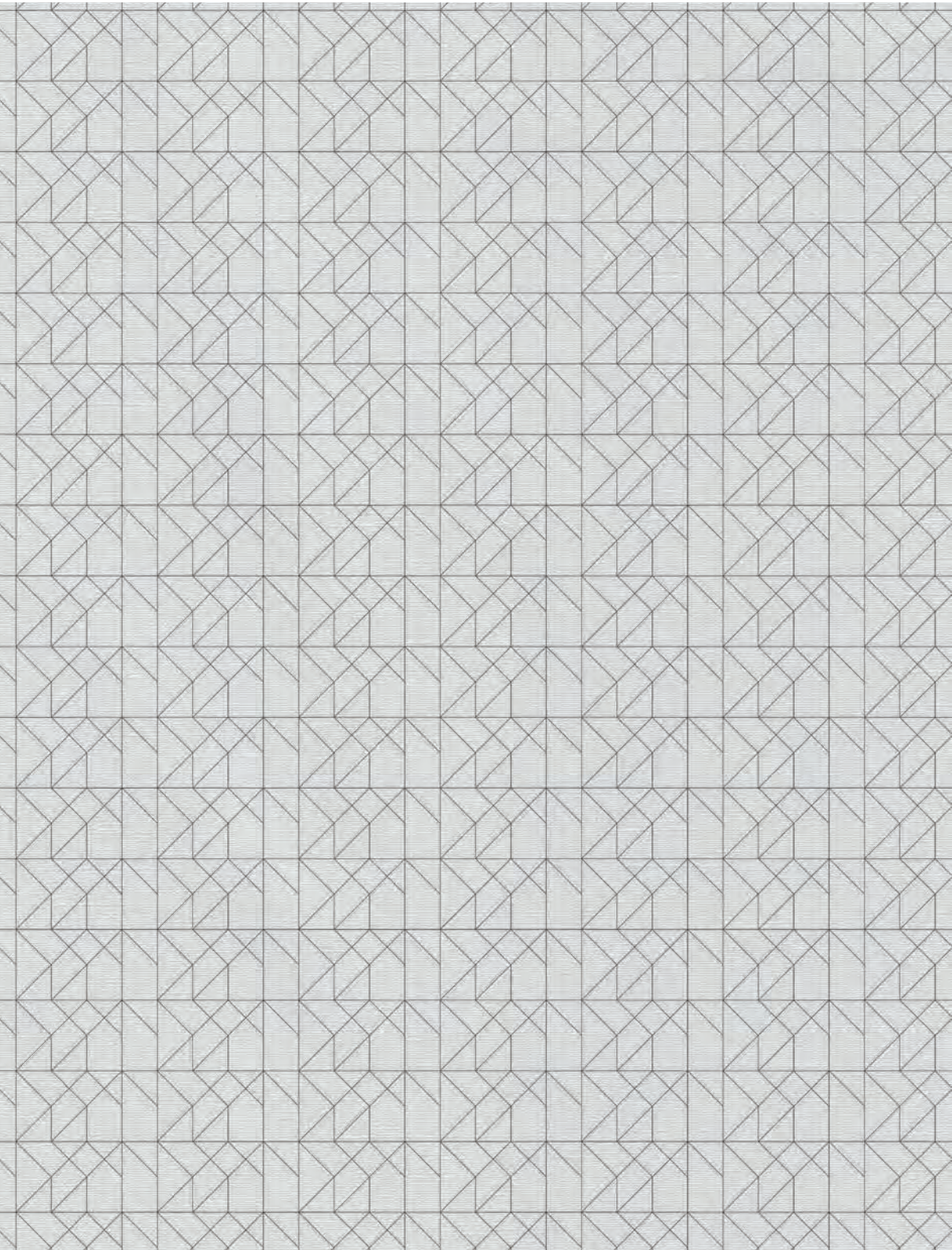




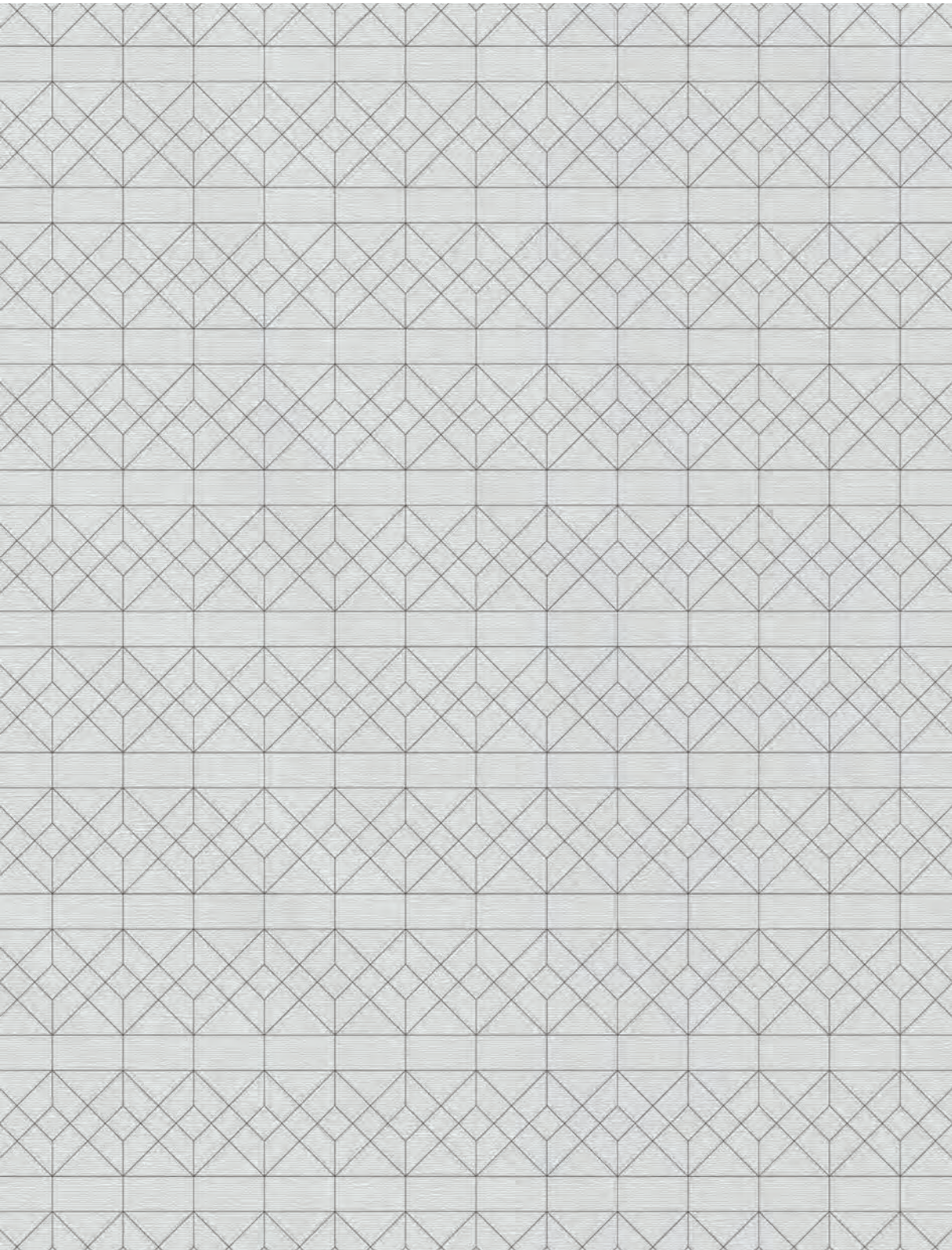


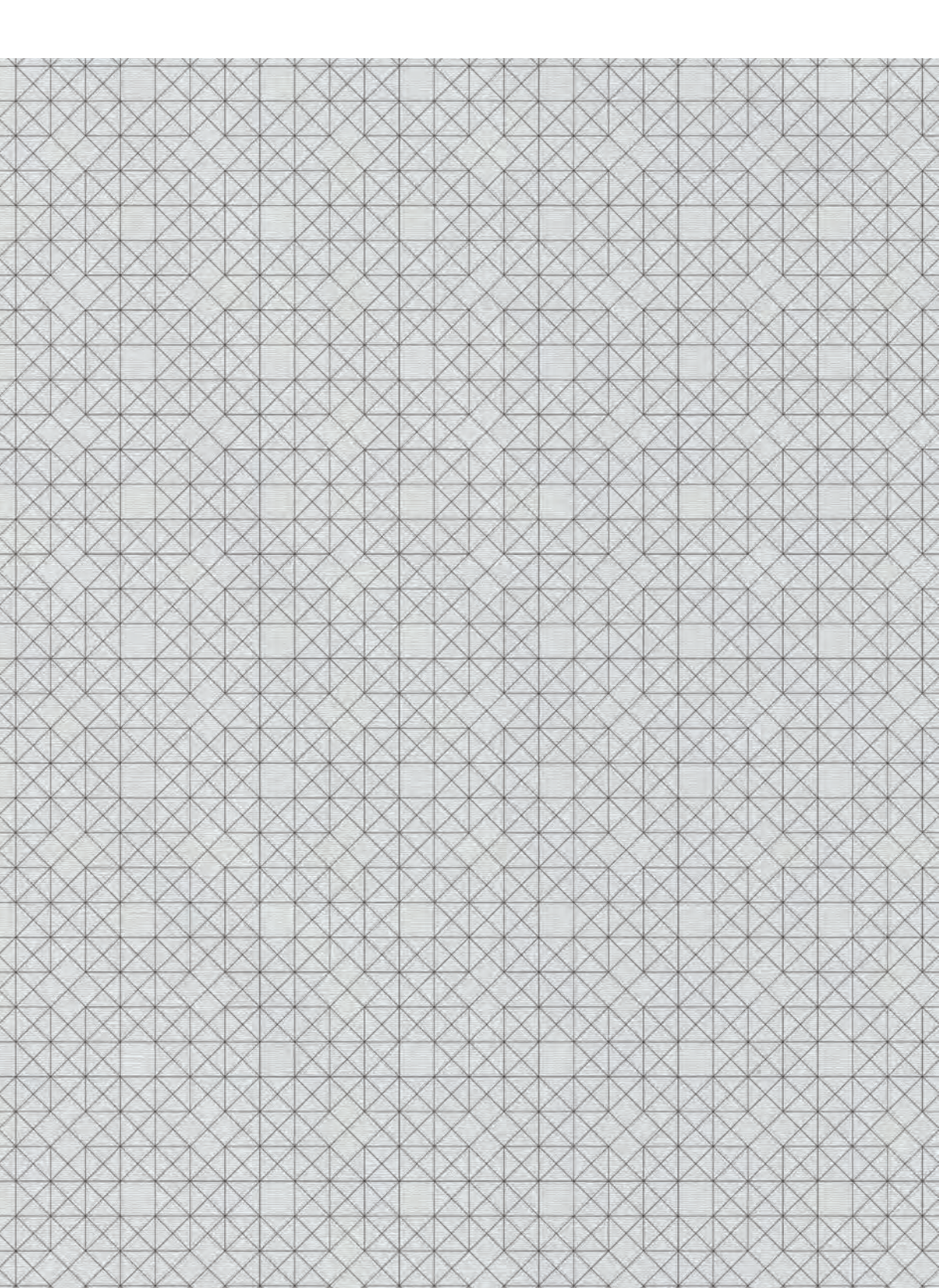


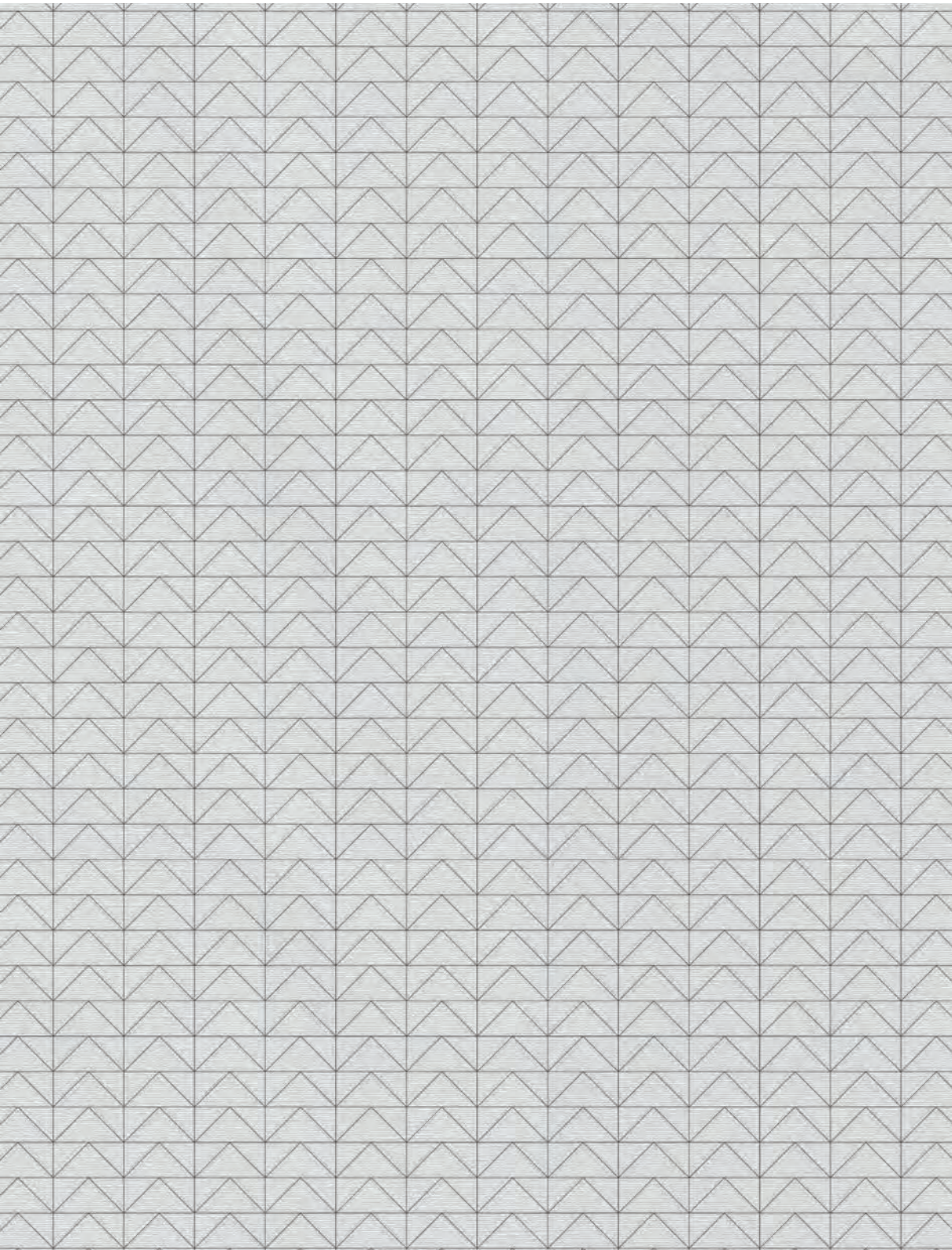


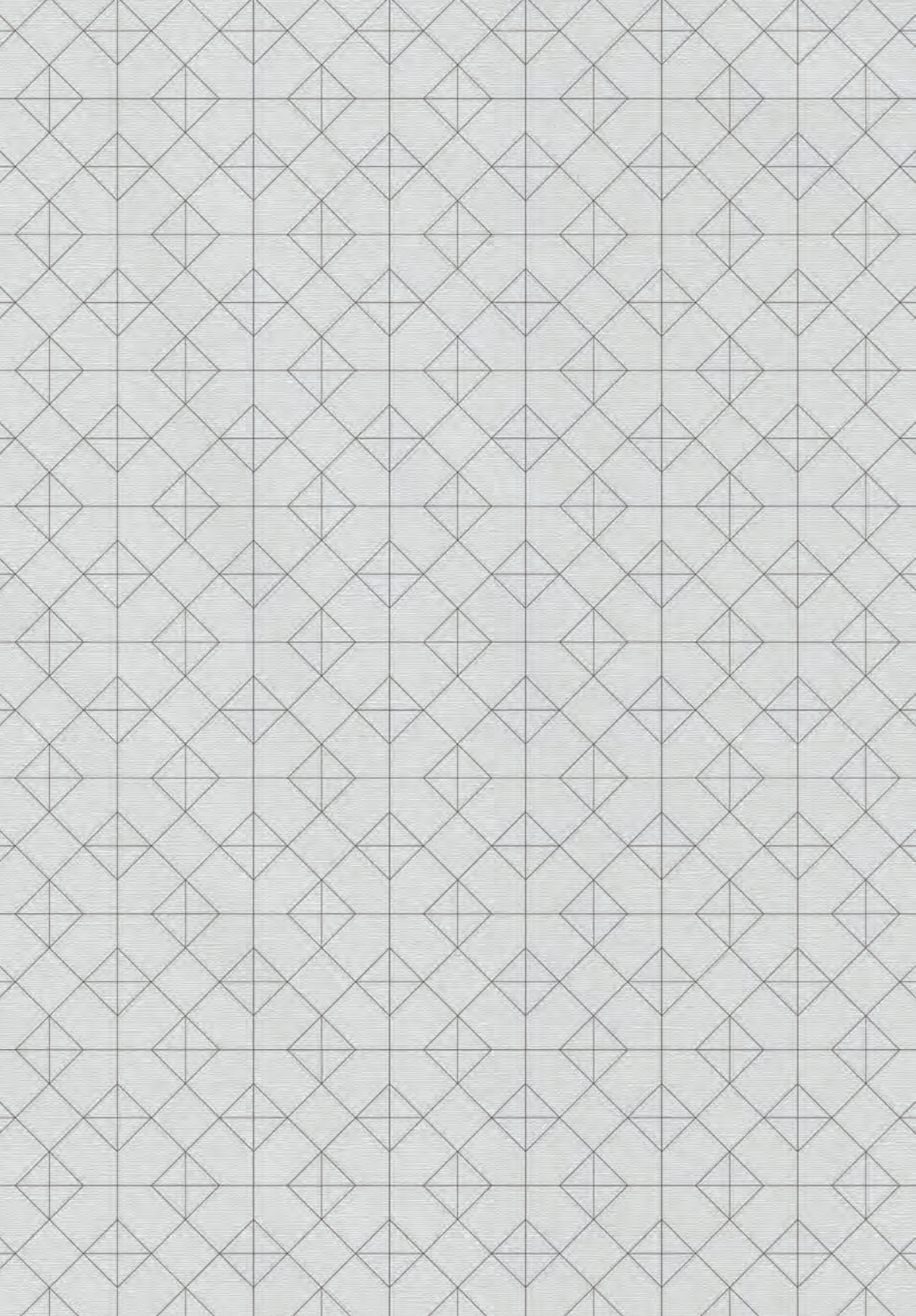




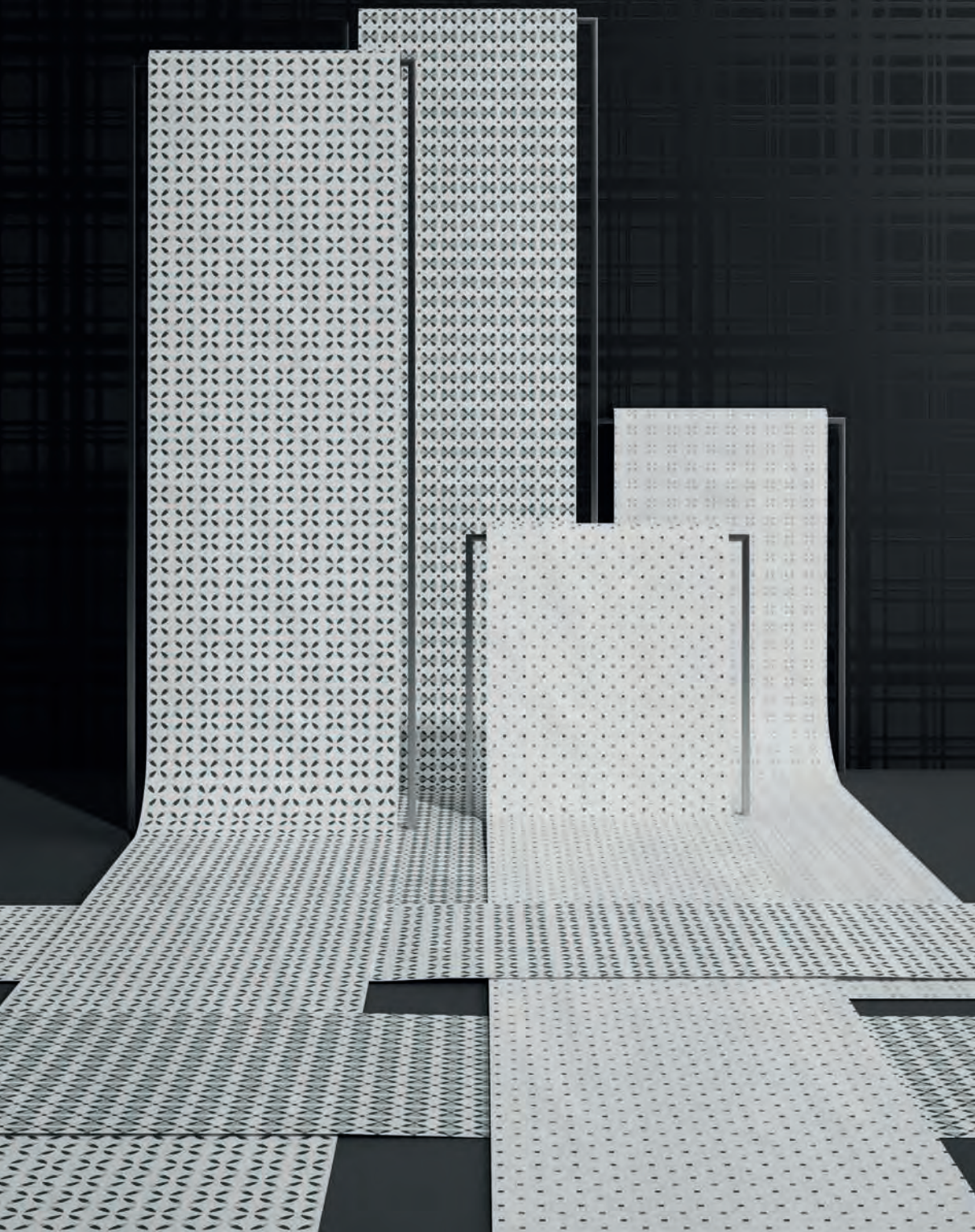


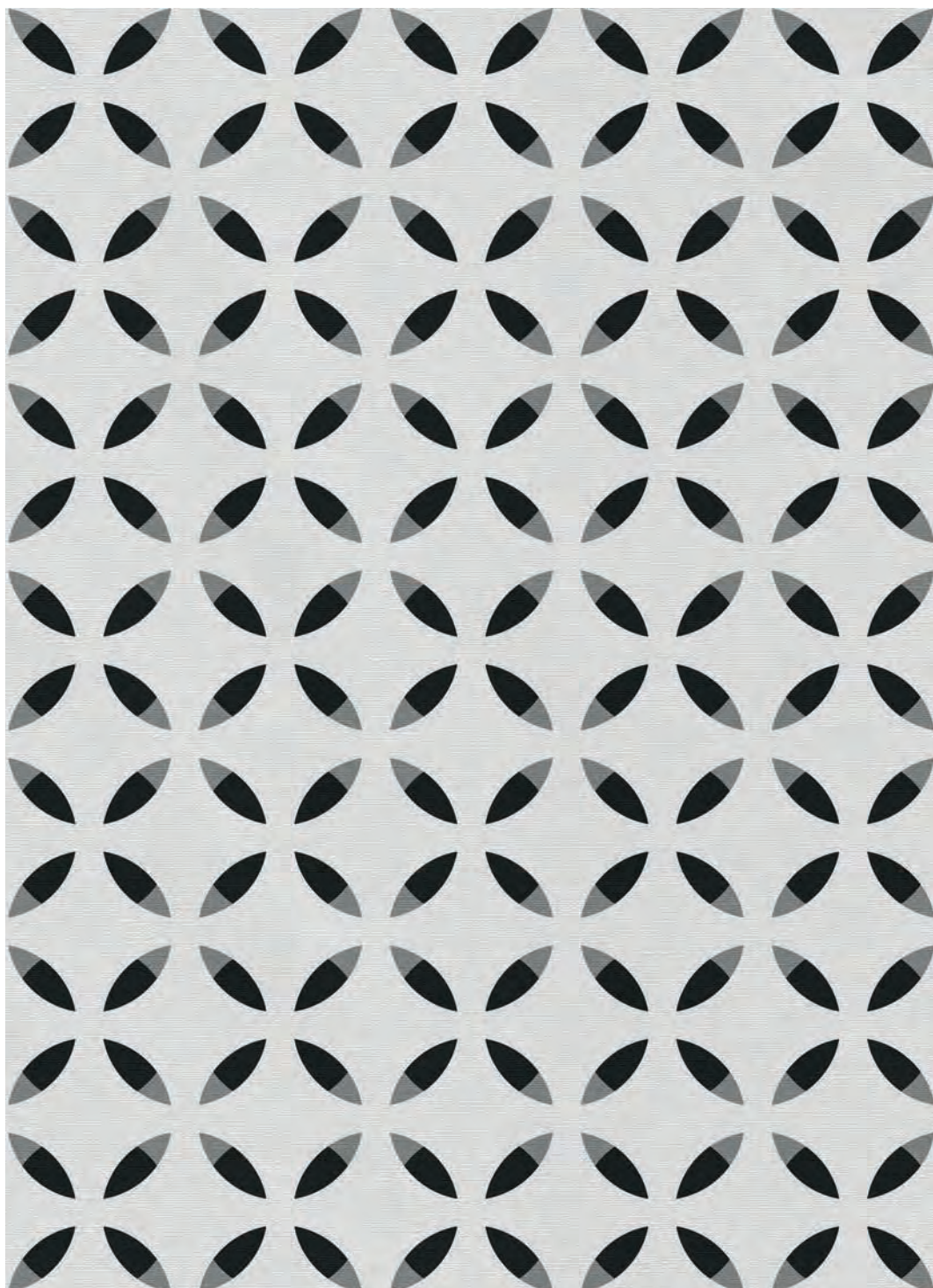


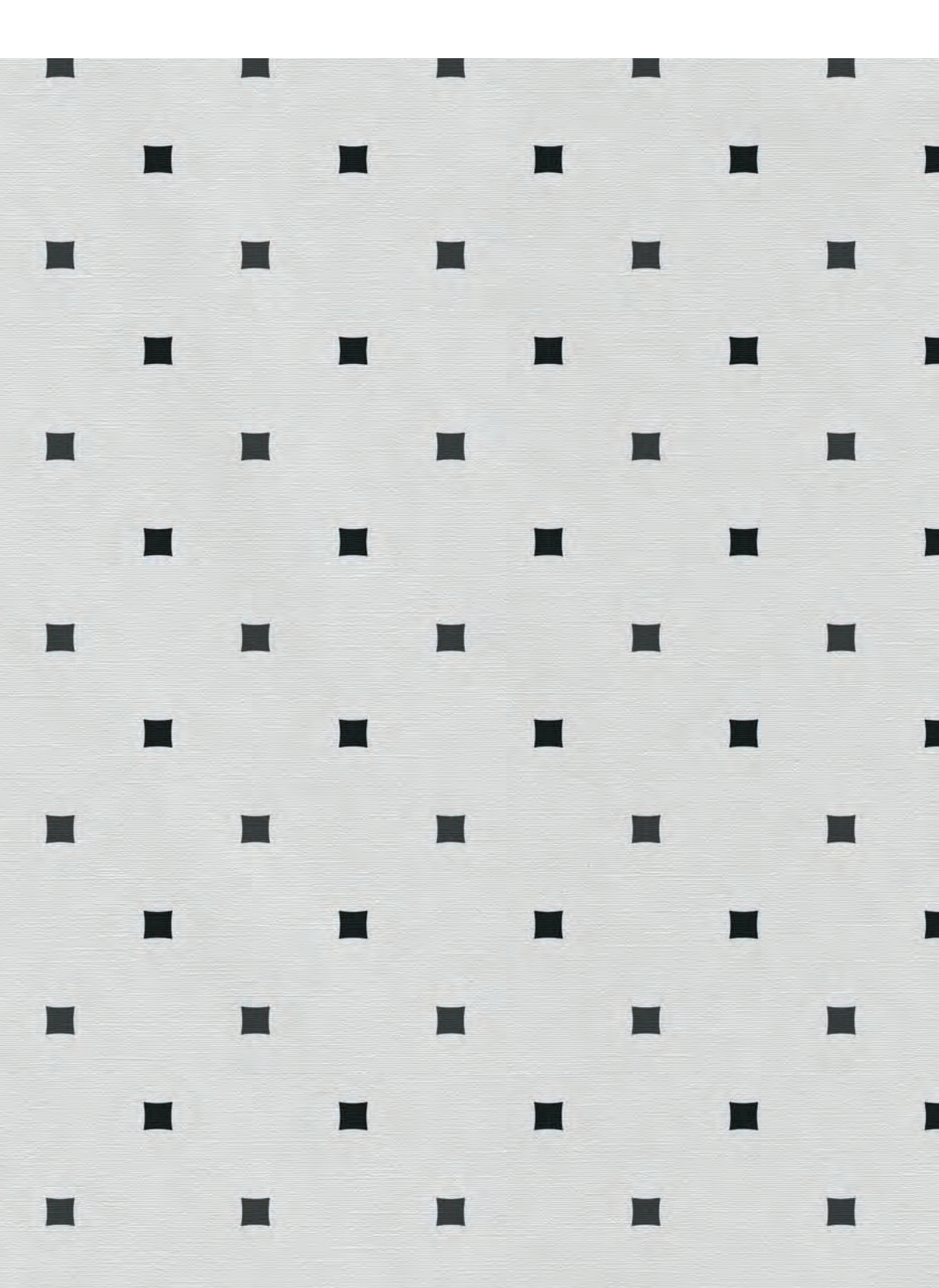




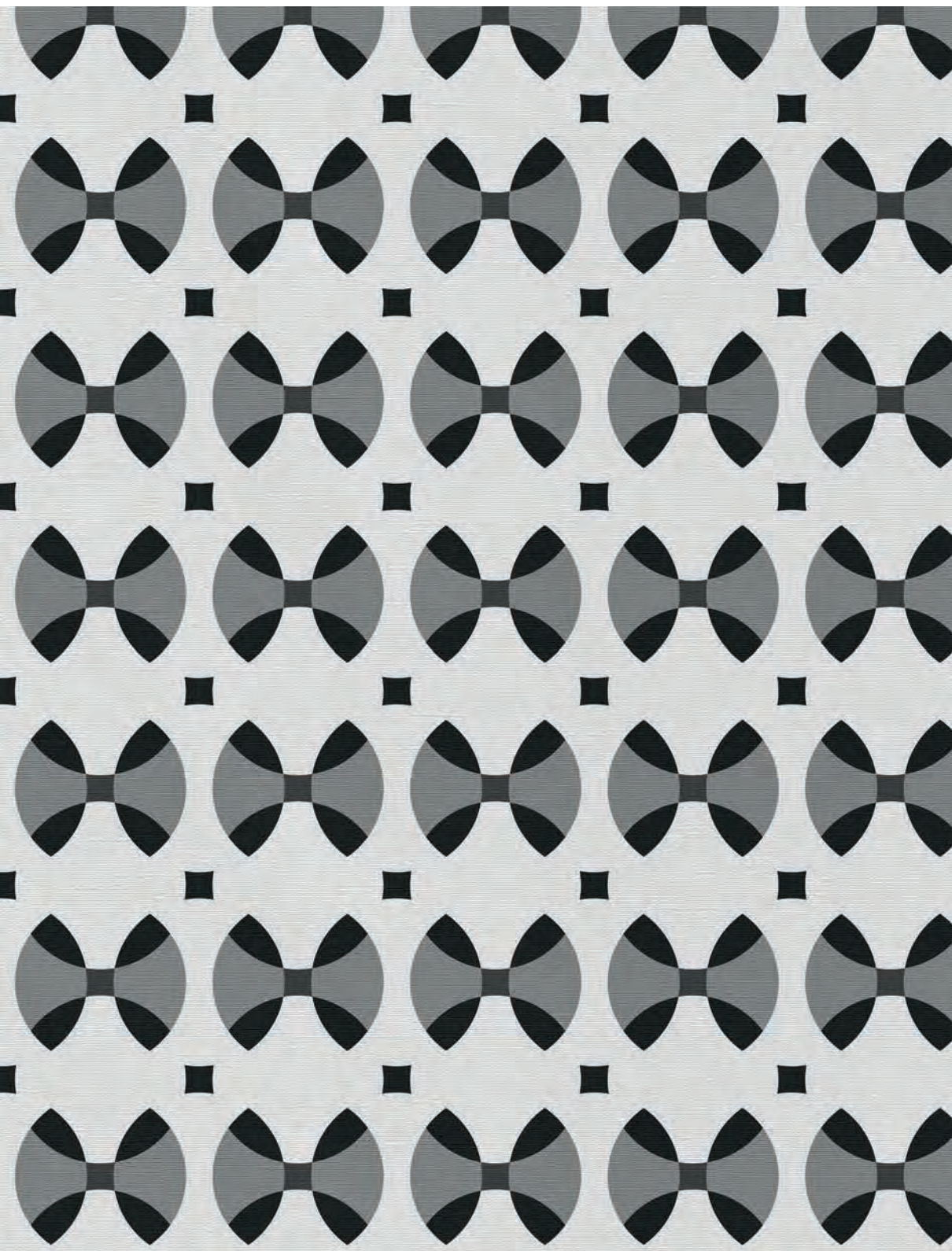


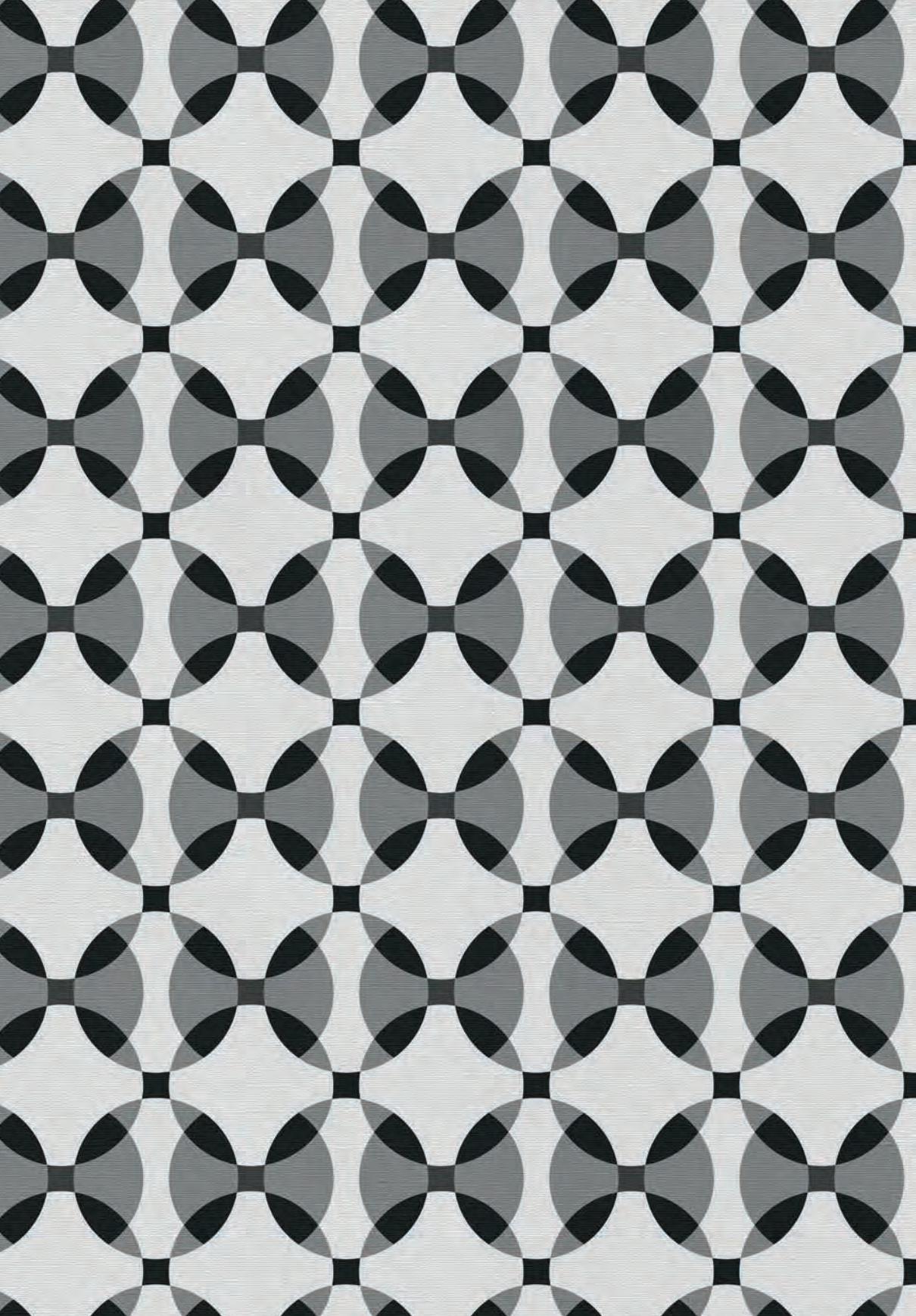












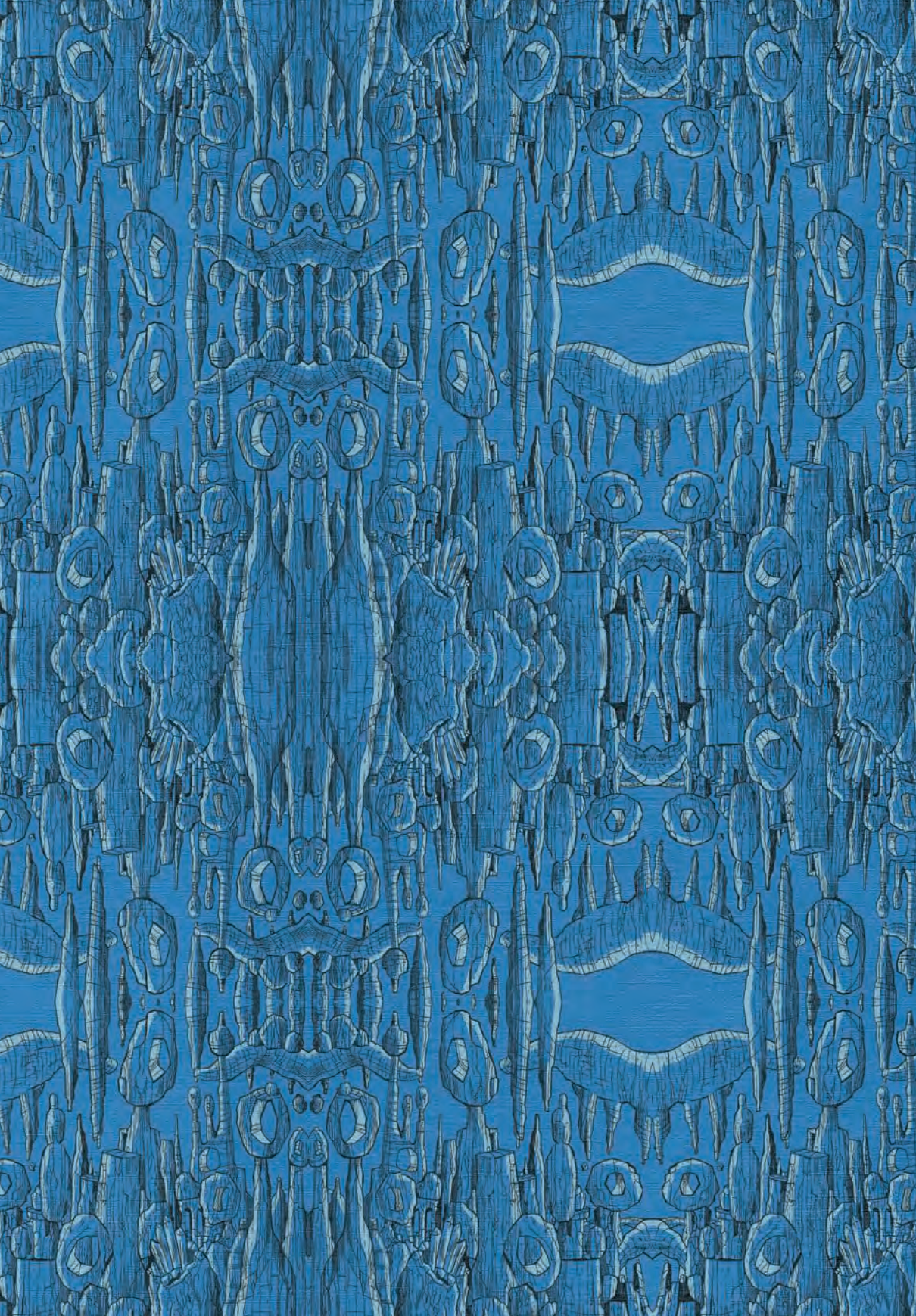




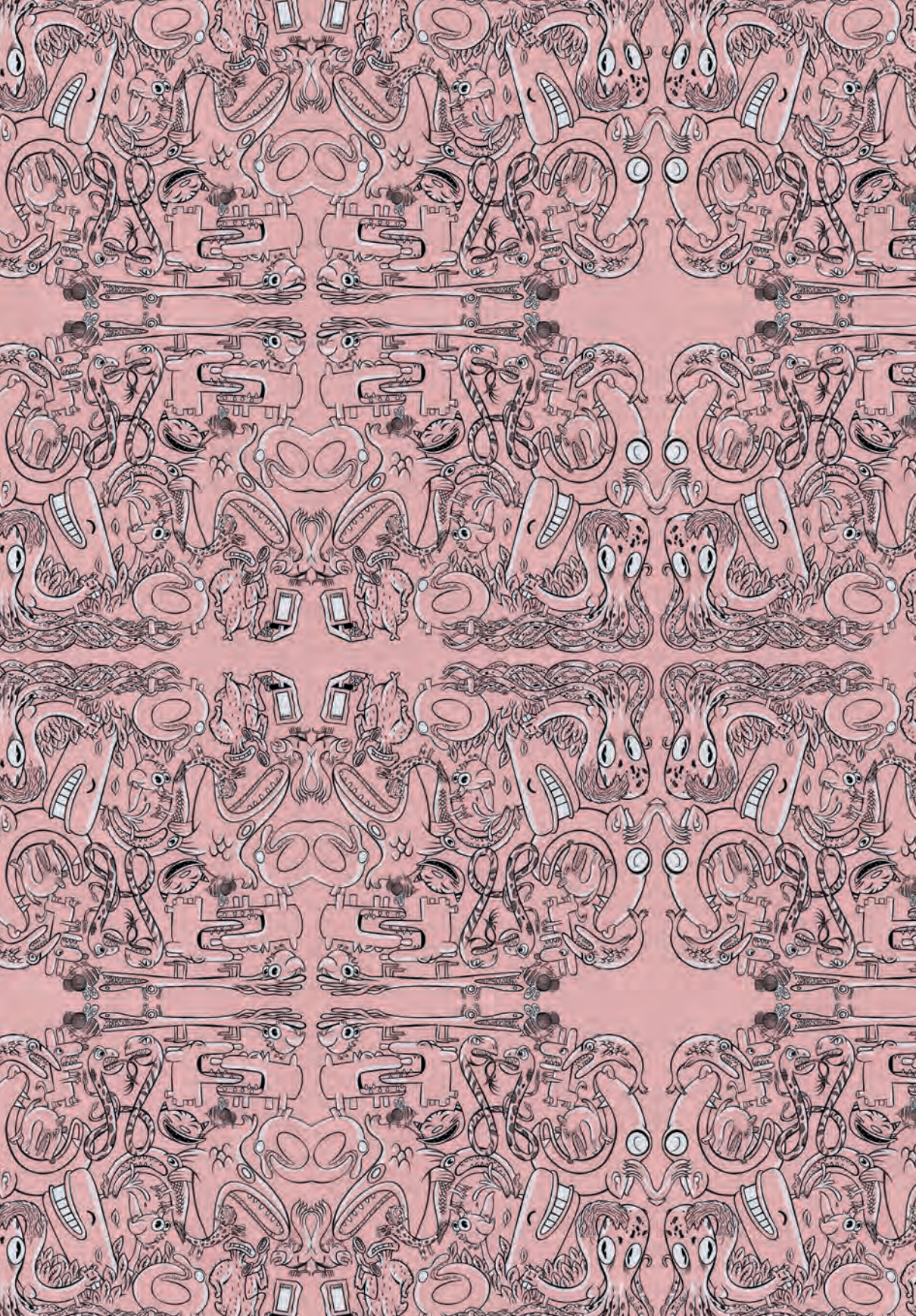
DESIGN  
Massimo Giacon

# TRITTICO



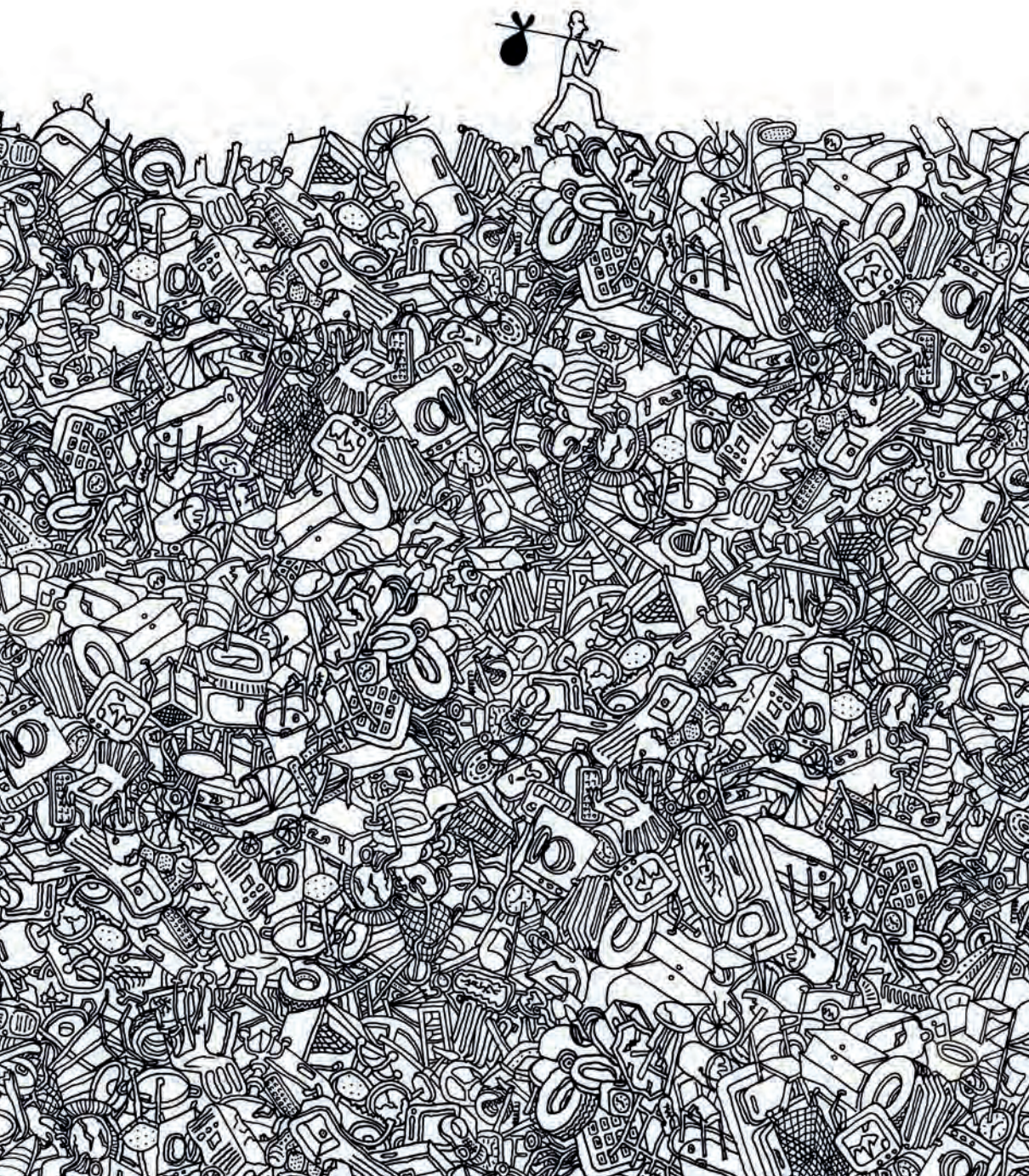






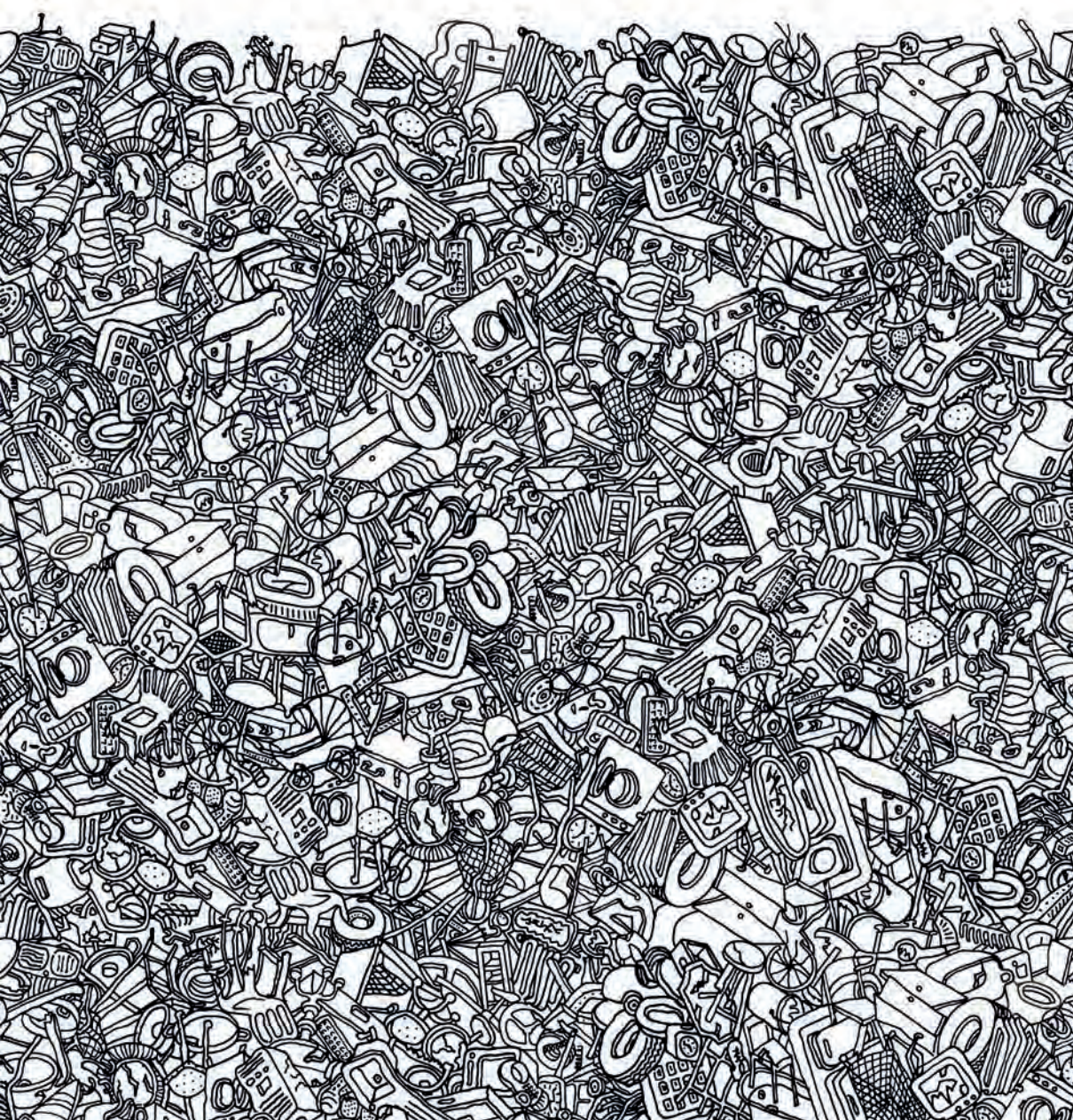


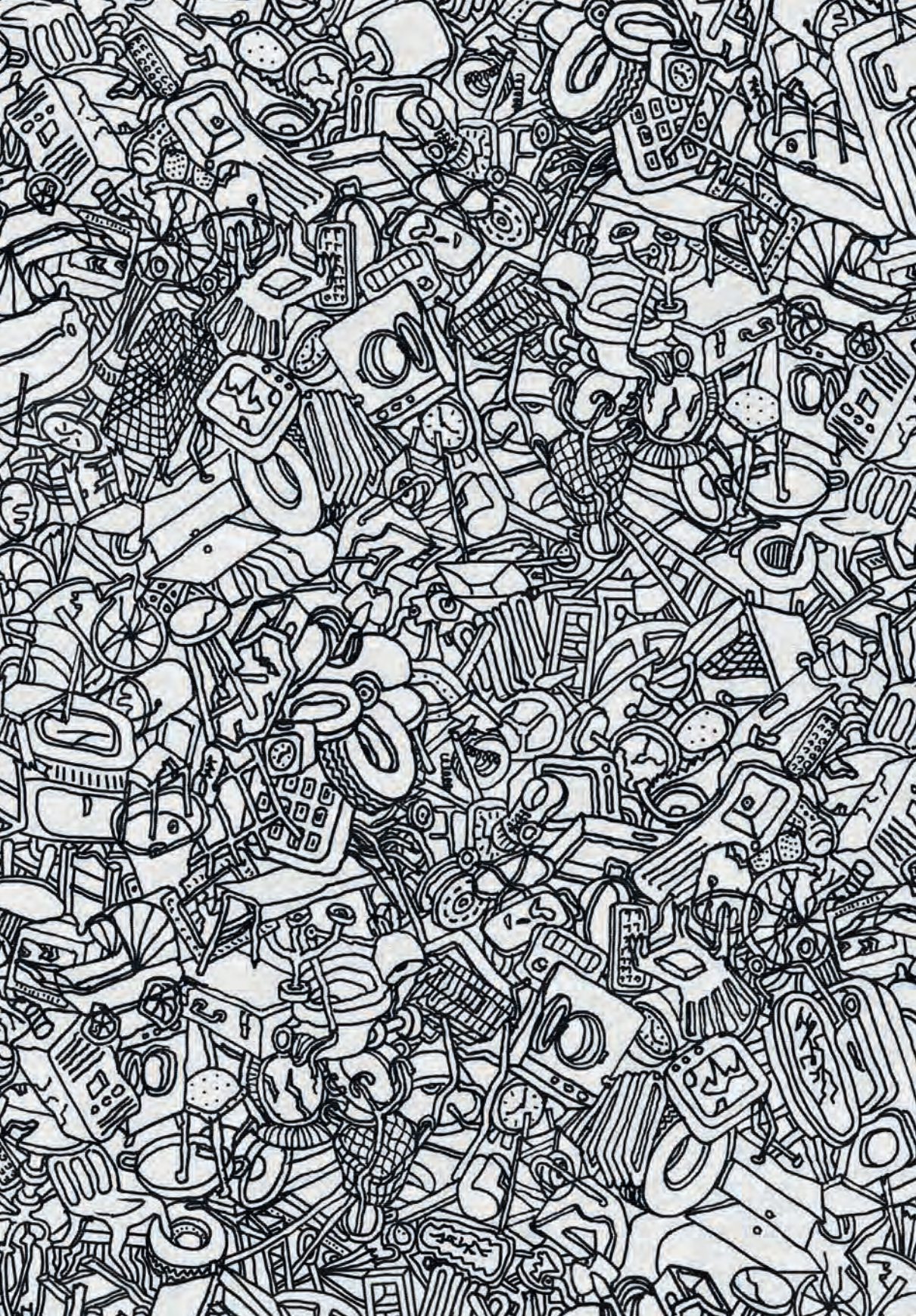




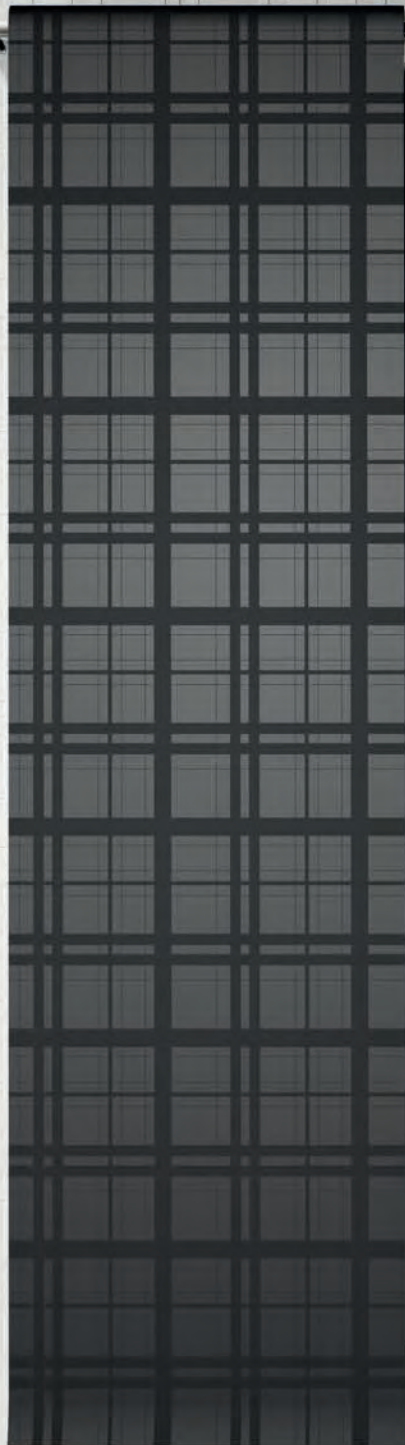
DESIGN  
Paolo Ulian

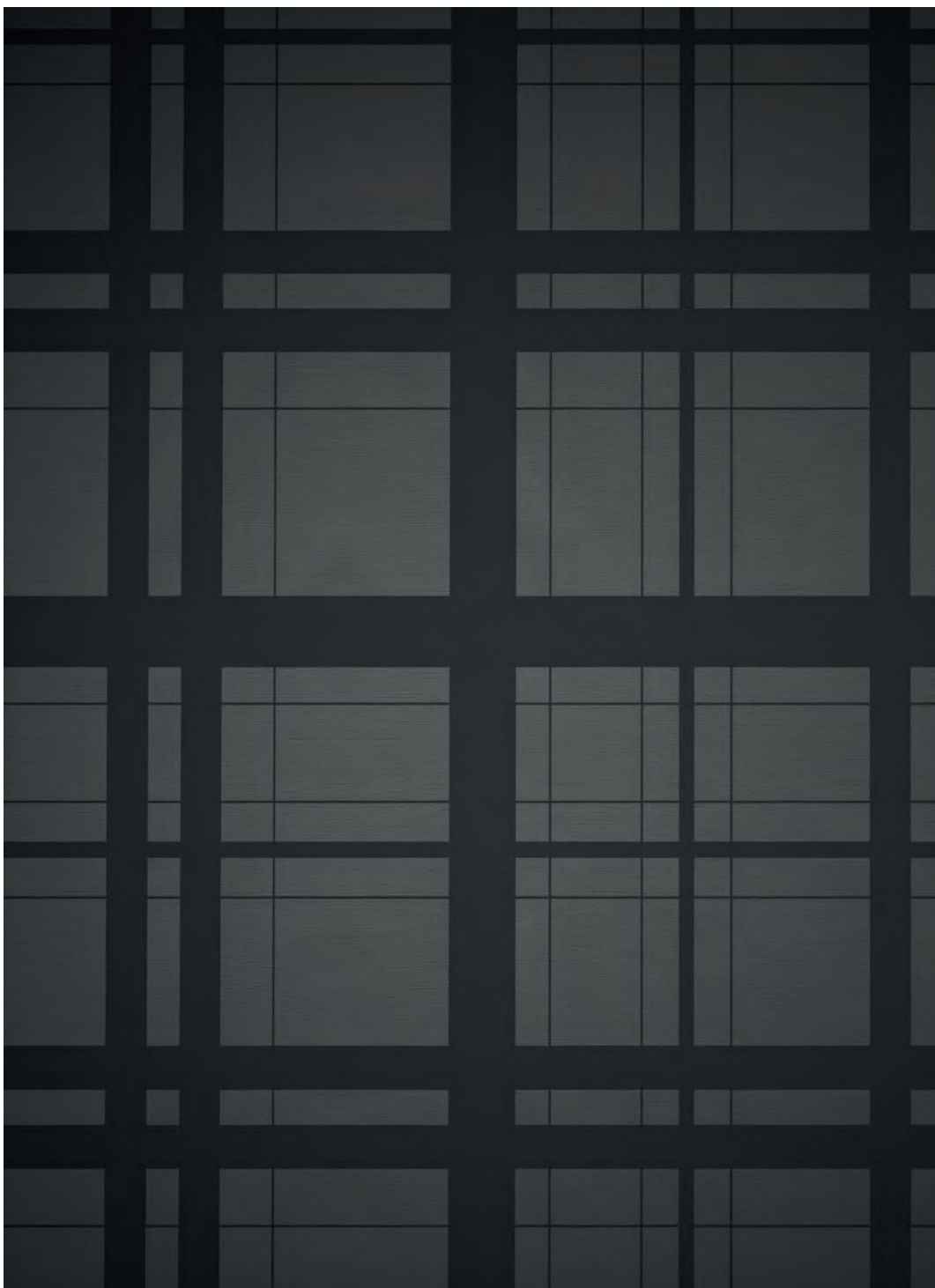
# IL VIAGGIATORE











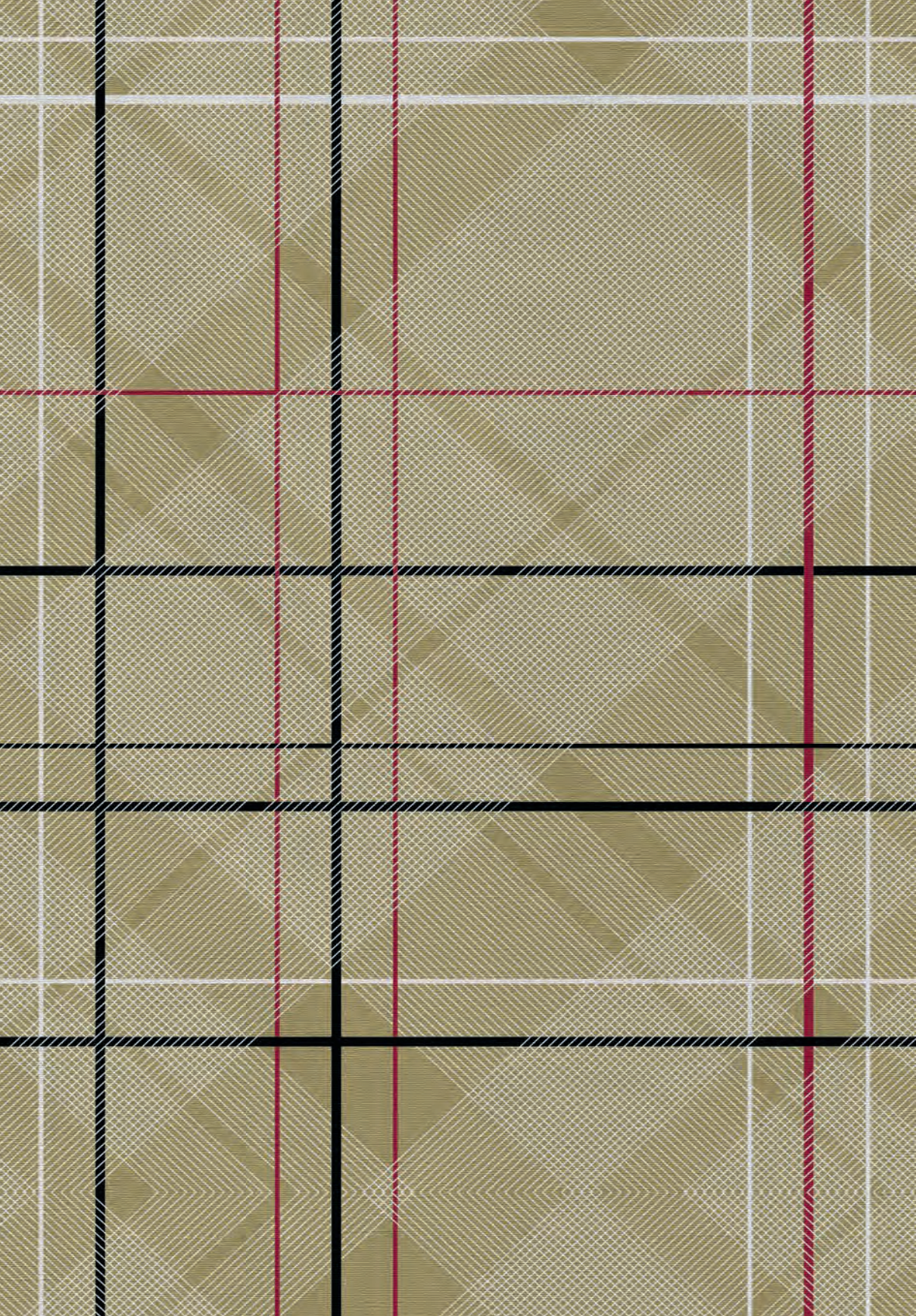








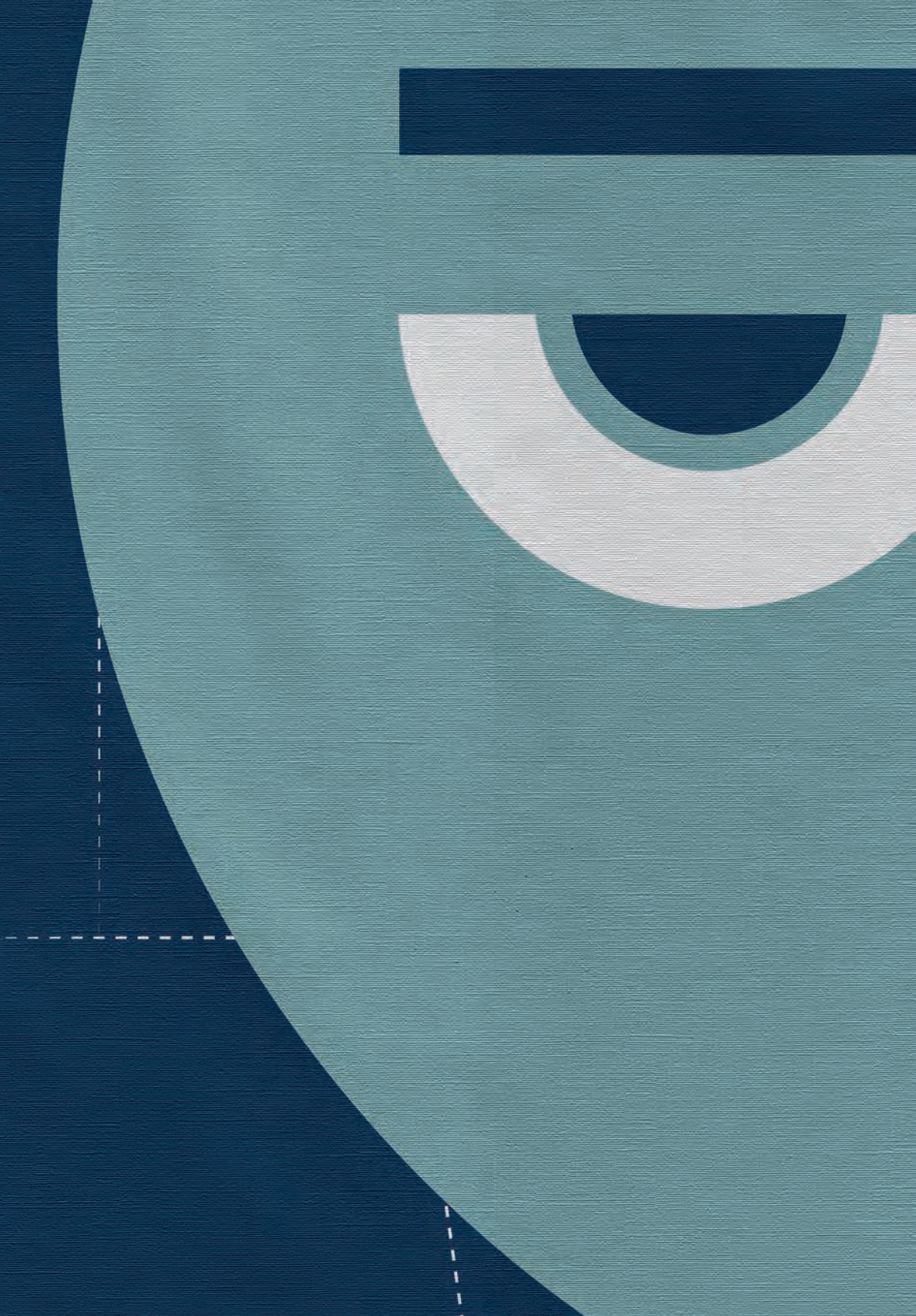






























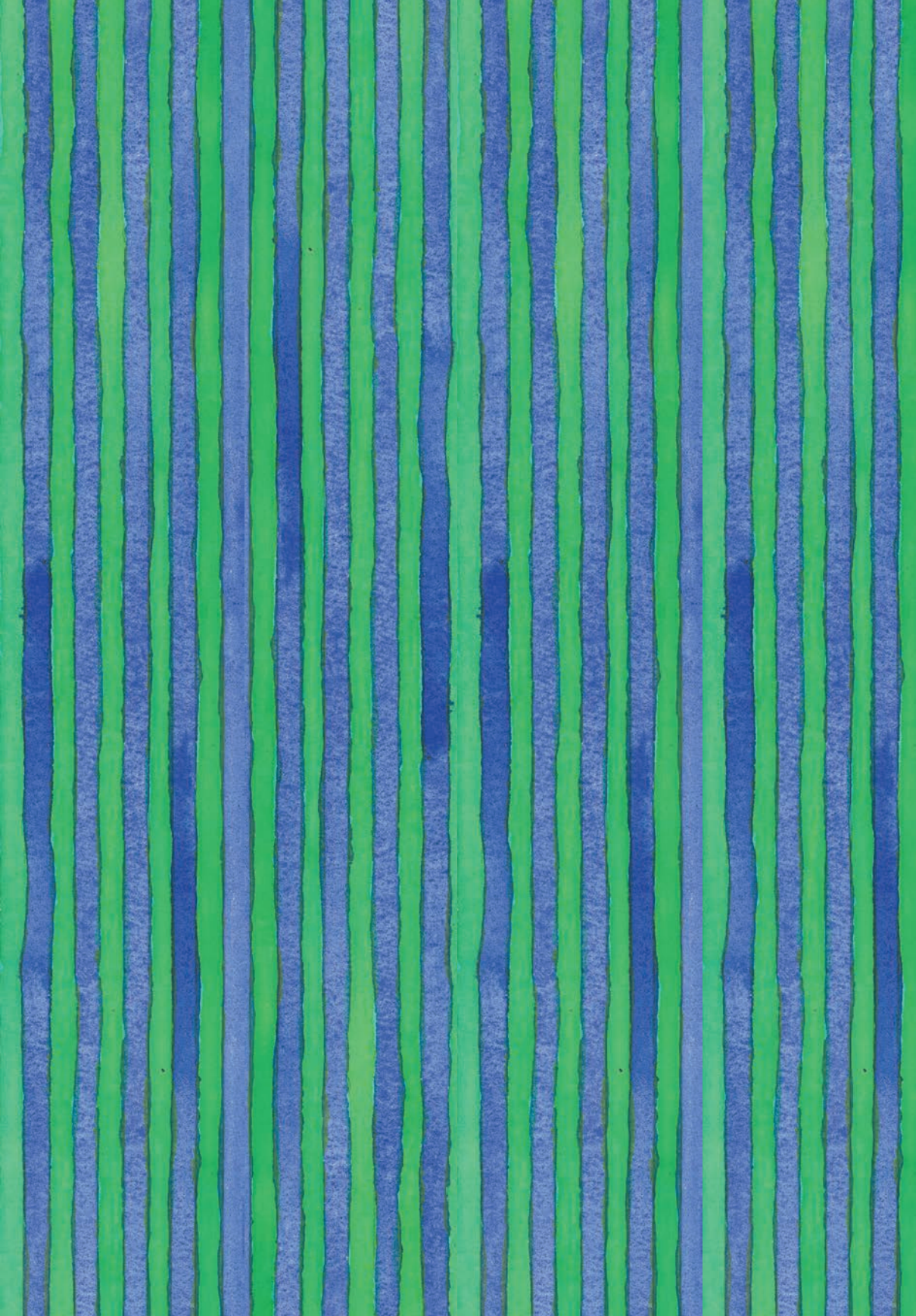




**\_020** styl'editions

PRINTED IN ITALY  
MARZO / MARCH

ART DIRECTION / GRAPHIC DESIGN **GUMDESIGN**



# styl'editions

VIA VALLE D'AOSTA 38  
41049 SASSUOLO \_ MO  
T +39 0536 997154  
INFO@STYLEDITIONS.IT  
WWW.STYLEDITIONS.IT

---

