

quilt.



MOSAICO⁺

QUILT CONCEPT	03
QUILT INSPIRATION	04
QUILT TECH INFO	42

quilt.
Studio Irvine

- + **TRADITION**
- + **PATCHWORK**
- + **STITCHING**
- + **FREEDOM OF
COMPOSITION**
- + **DÉJÀ-VU**

— “Il lavoro del patchwork fa parte di una tradizione antica del fatto a mano in cui l’insieme degli elementi crea un gioco geometrico sempre unico. Sfogliando un vecchio libro inglese di patchwork ho scoperto il quilt: una trapunta che unisce i patchwork attraverso una cucitura che è essa stessa decoro.”

“Patchwork belongs to an age-old hand-crafted tradition, in which the combined pieces always create a unique geometrical pattern. Looking through an old English book on patchwork I discovered the art of quilting, in which patchwork pieces are combined by stitching which is decorative in its own right.”

Marialaura Rossiello

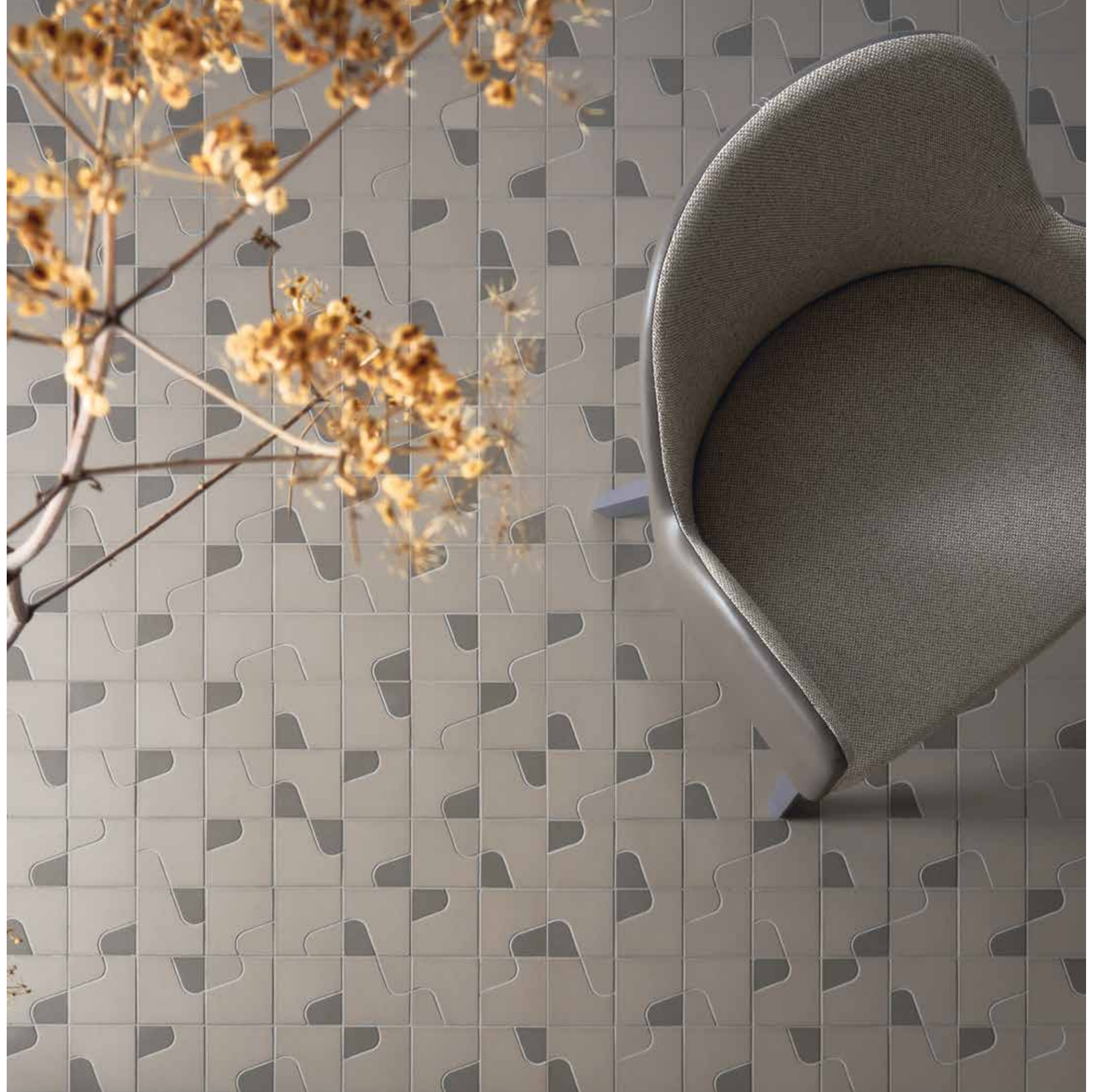
+
> Quilt Mud TV.031Q
v Quilt Mud TV.031Q
Quilt Mud Slate TV.033AQ





+ > **Quilt Mud TV.031Q**

+
v **Quilt Mud TV.031Q**
Quilt Mud Slate TV.033AQ



_In Quilt i lisci, i raw
e i colorati possono
essere utilizzati
assieme, miscelandone
le percentuali come in
un'opera fatta a mano.

*Quilt smooth, raw and
colored tiles can be
mixed and matched in
different percentages,
just like a hand-made
patchwork.*

> Quilt Clay TV.021Q
Quilt Clay Mud TV.023AQ
v Quilt Clay Raw TV.022Q



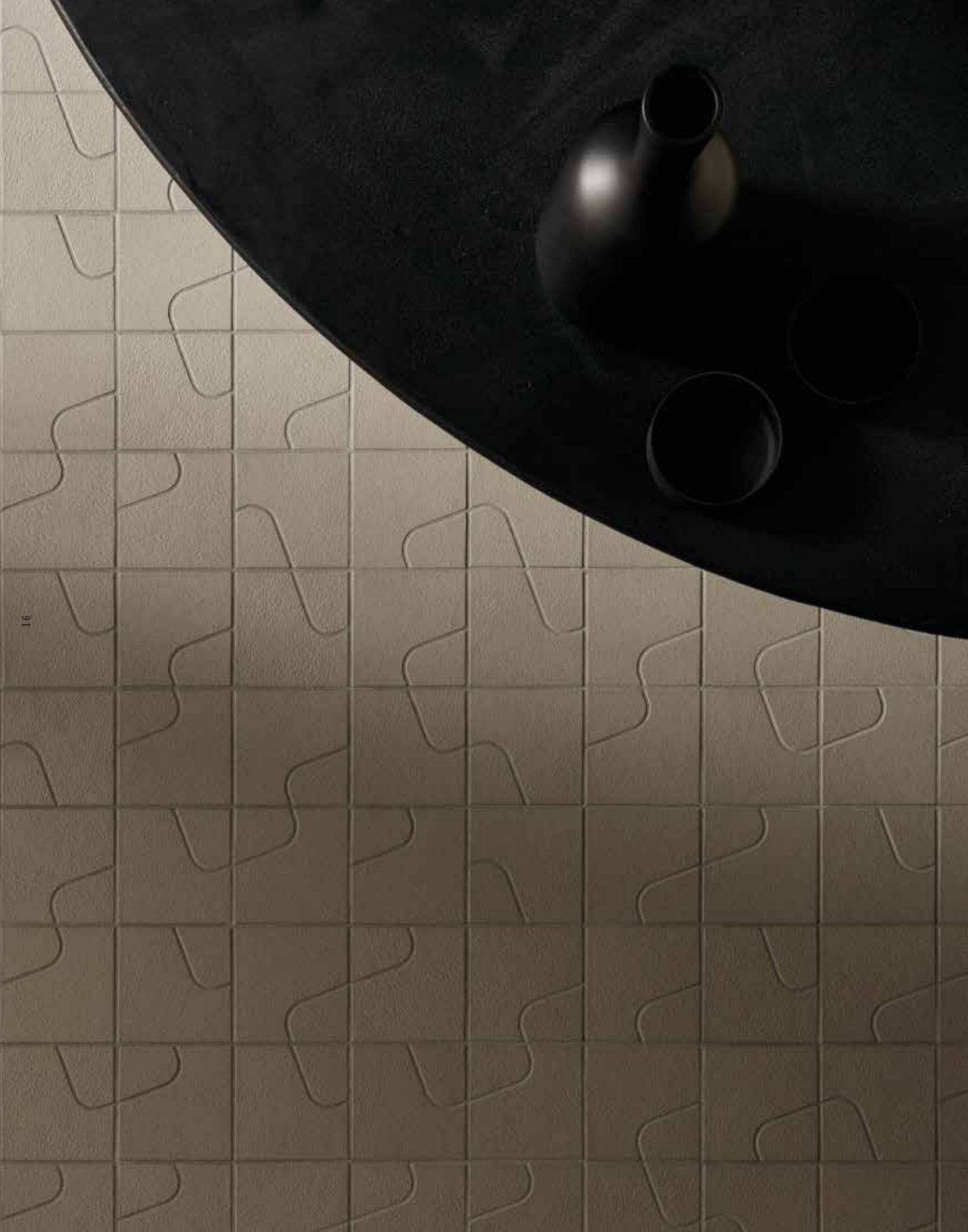


_Quilt è un mosaico in grès in cui i tasselli possono essere posati regolarmente ricreando la forma geometrica, o random, creando una posa irregolare che richiama le antiche pavimentazioni in seminato.

Quilt is a stoneware mosaic in which the modules can be installed uniformly, for a geometrical effect, or at random, in an uneven layout that recalls antique Venetian Seminato pavings.

- + > **Quilt Clay** TV.021Q
- Quilt Clay Mud** TV.023AQ
- v **Quilt Clay Raw** TV.022Q





- + > **Quilt Clay** TV.021Q
- Quilt Clay Mud** TV.023AQ
- v **Quilt Clay Raw** TV.022Q



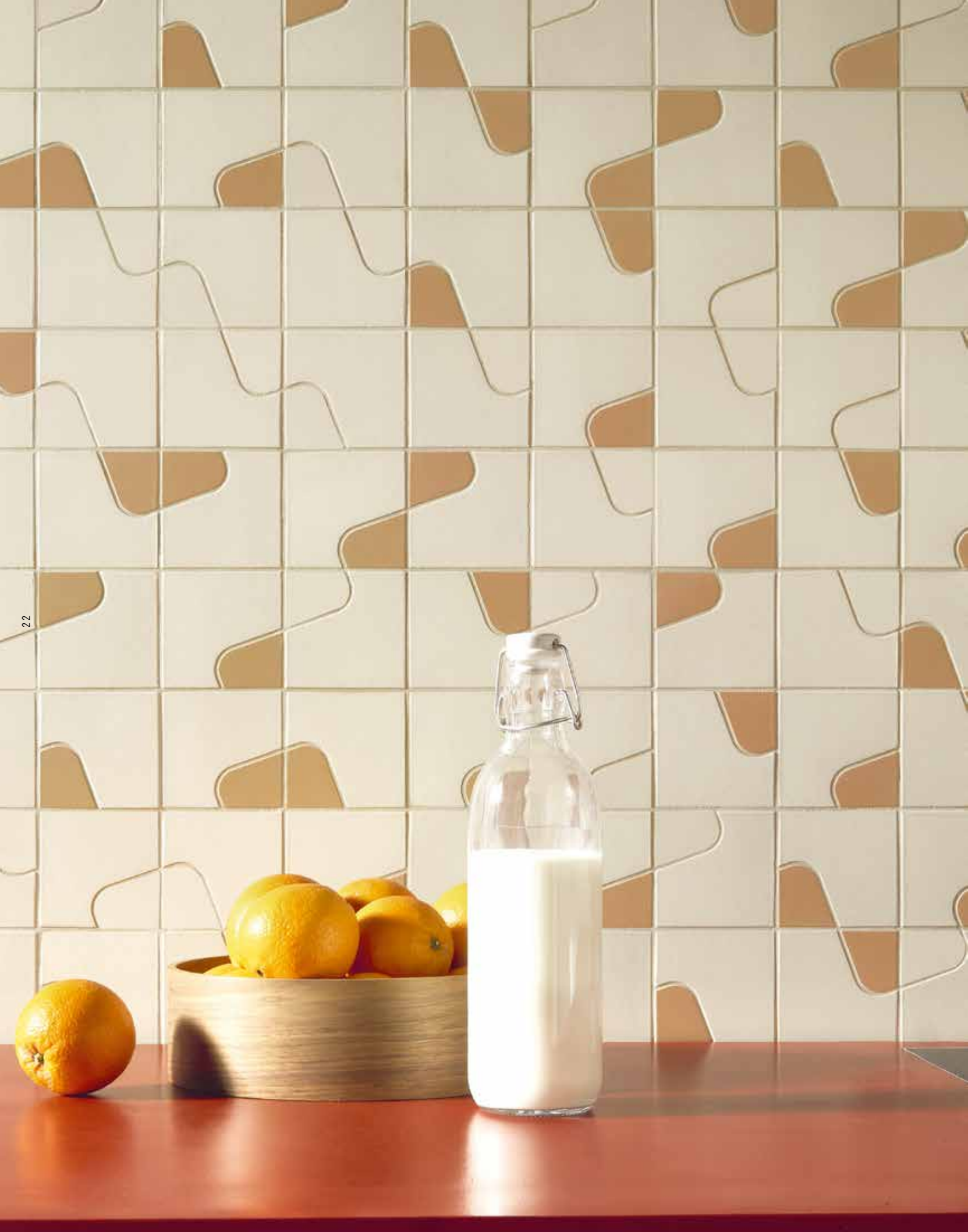
+
> Quilt Clay TV.021Q
Quilt Clay Mud TV.023AQ
v Quilt Clay Raw TV.022Q

_Quilt è un progetto ricco di possibilità applicative. Un piccolo quadrato, 3 colorazioni base disponibili in due varianti, liscia e raw, con uno spicchio separato tramite un'incisione che può rimanere ton-sur-ton o colorato a contrasto.

Quilt is a project full of application possibilities. A small square, 3 basic colors available in 2 variants, smooth and raw, with a segment separated by an incision that can remain tone-on-tone or colored in contrast.



+
> Quilt Chalk TV.011Q
Quilt Chalk Cameo TV.013CQ



+
> **Quilt Chalk TV.011Q**
Quilt Chalk Cameo TV.013CQ



+ **Quilt Chalk TV.011Q**
+ **Quilt Chalk Ochre TV.013AQ**
v **Quilt Chalk Raw TV.012Q**



+ **Quilt Chalk TV.011Q**



_La classica tessera del mosaico, con Quilt aumenta la sua dimensione per creare effetti visivi contemporanei di volta in volta personalizzabili proprio come un'opera fatta a mano. Le diverse proposte di colore e texture aumentano tali possibilità.

With Quilt, the traditional mosaic chip is expanded in size to create contemporary visual effects which can be personalised every time, just like a hand-stitched piece. The different colours and textures available enhance this potential.

+
> Quilt Chalk TV.011Q
Quilt Chalk Ochre TV.013AQ





_La fuga come cucitura
realizza il decoro.

*The joint plays the
same role as the
decorative stitching.*

- + > **Quilt** Chalk Ochre TV.013AQ
- v **Quilt** Chalk TV.011Q
- Quilt** Chalk Ochre TV.013AQ
- Quilt** Chalk Sugar Paper TV.013BQ
- Quilt** Chalk Cameo TV.013CQ





- + **Quilt Chalk TV.011Q**
- ✓ **Quilt Chalk Ochre TV.013AQ**
- Quilt Chalk Sugar Paper TV.013BQ**
- Quilt Chalk Cameo TV.013CQ**





+
v Quilt Chalk TV.011Q
Quilt Chalk Ochre TV.013AQ
Quilt Chalk Sugar Paper TV.013BQ
Quilt Chalk Cameo TV.013CQ



+
> **Quilt Chalk Ochre TV.013AQ**

MATERIA | MATERIAL

Gres porcellanato | *Porcelain stoneware*

Quilt nasce da un quadrato 94x94 mm in grès porcellanato a tutta massa inciso in maniera da separare visivamente, una volta stuccato, uno spicchio dal resto della materia. Quilt si sviluppa su tre toni base, ognuno disponibile nella variante liscia e nella variante strutturata (RAW). La gamma si arricchisce con alcune varianti in cui lo spicchio assume colorazioni diverse.

I quadrati possono essere posati in maniera regolare per creare una sequenza di figure geometriche, o in maniera irregolare, ricordando un seminato contemporaneo.

Nella posa irregolare suggeriamo di utilizzare al 50% Quilt a tinta unita e al 50% la versione con spicchi colorati*. Quilt è adatto all'uso a pavimento e rivestimento per interni e esterni per immersione (piscine).

Quilt is produced as a 94x94 mm square of through-body porcelain stoneware scored so that a segment can be broken off from the rest of the material after grouting.

Quilt is available in three base shades, and each colour is available in smooth and structured (raw) variants. The range includes variants in which the detachable segment is in different colours.

The squares can be installed in a regular pattern to create a sequence of geometrical figures, or unevenly in a contemporary form of Venetian Seminato. In random layouts, we recommend use of 50% whole-colour Quilt and 50% coloured segment version. Quilt is suitable for indoor and outdoor floor, wall coverings and pavings and immersion (swimming pools).*

* Il prodotto deve essere posato mantenendo una fuga di 3 mm tra i moduli con i distanziali forniti all'interno della confezione. Mosaico+ suggerisce la stuccatura con stucco cementizio o con stucco epossidico a grana grossa a seconda della destinazione d'uso del materiale. Per ulteriori informazioni si prega di consultare l'ufficio tecnico.

The product must be installed with a 3 mm joint between modules, with the aid of the spacers supplied in the pack. Depending on the destination of use, for Quilt we suggest a polymer modified cementitious grout or a coarse-grained epoxy grout. For further information please contact us.

INFORMAZIONI TECNICHE | TECH INFO



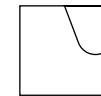
* Ultracolor Plus e Kerapoxy CQ sono prodotti Mapei. Per informazioni tecniche e commerciali contattare Mapei S.p.A o visitare il sito www.mapei.it.

Ultracolor Plus and Kerapoxy CQ are Mapei products. For technical and sales information, please contact Mapei S.p.A. or visit www.mapei.it.

IMBALLI | PACKAGING

Misure Foglio mm inches Sheet Size mm inches	Fogli Scatola Sheets Box	m ² Sq ft Scatola Sq. Sq ft Box	Kg lbs Scatola Kg lbs Box	Scatole Pallet Box Pallet	m ² Sq ft Pallet Sq. Sq ft Pallet	Kg lbs Pallet Kg lbs Pallet
94x94x8 mm 3 ^{45/64} "x3 ^{45/64} "x 1/4"	73	0,64 6,89	~ 11,735 25,87	60	38,40 413,33	~ 704,10 1.552,20

FORMATI | SIZES



94x94x8 mm
3^{45/64}"x3^{45/64}"x 1/4"

COLORI | COLORS

NEUTRAL



Chalk
TV.011Q
Ultracolor Plus 137
Kerapoxy CQ 130



Chalk Raw
TV.012Q
Ultracolor Plus 137
Kerapoxy CQ 130



Chalk Ochre
TV.013AQ
Ultracolor Plus 137
Kerapoxy CQ 130



Chalk Sugar Paper
TV.013BQ
Ultracolor Plus 137
Kerapoxy CQ 130



Chalk Cameo
TV.013CQ
Ultracolor Plus 137
Kerapoxy CQ 130



Clay
TV.021Q
Ultracolor Plus 112
Kerapoxy CQ 111



Clay Raw
TV.022Q
Ultracolor Plus 112
Kerapoxy CQ 111



Clay Mud
TV.023AQ
Ultracolor Plus 112
Kerapoxy CQ 111



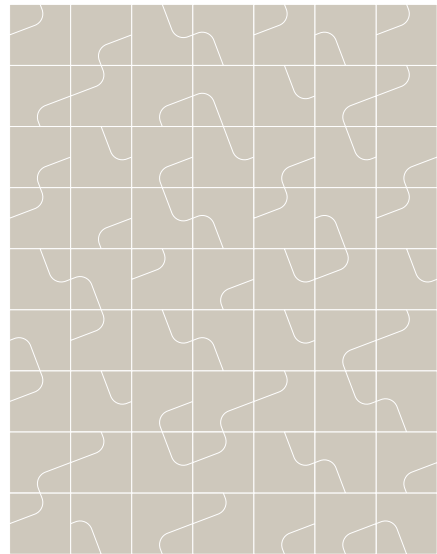
Mud
TV.031Q
Ultracolor Plus 113
Kerapoxy CQ 113



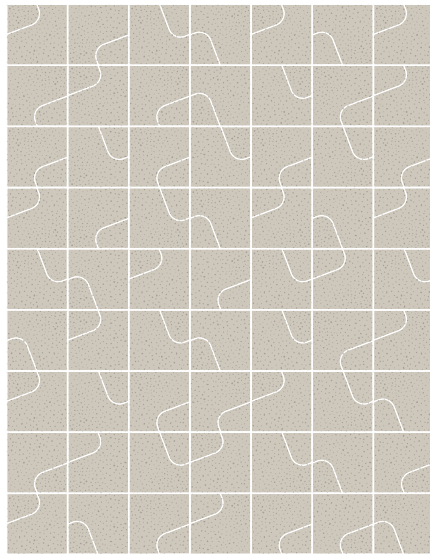
Mud Raw
TV.032Q
Ultracolor Plus 113
Kerapoxy CQ 113



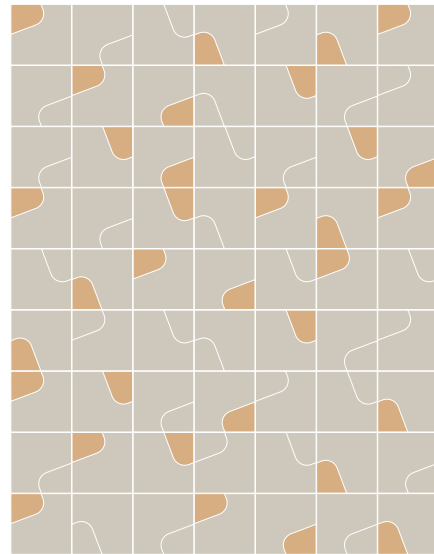
Mud Slate
TV.033AQ
Ultracolor Plus 113
Kerapoxy CQ 113



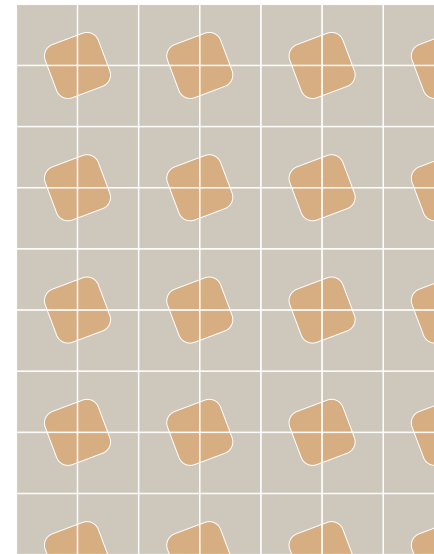
A Chalk (100%)



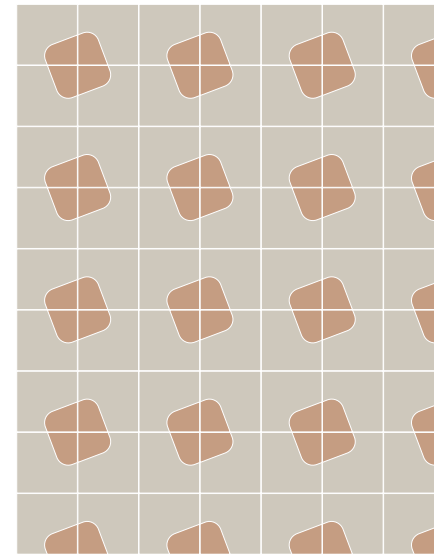
B Chalk Raw (100%)



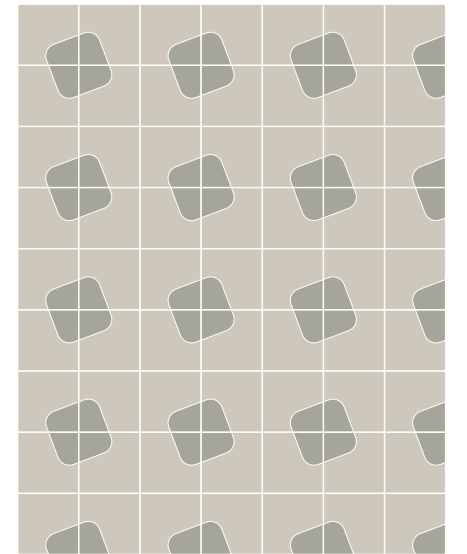
C Chalk (50%)
Chalk Ochre (50%)



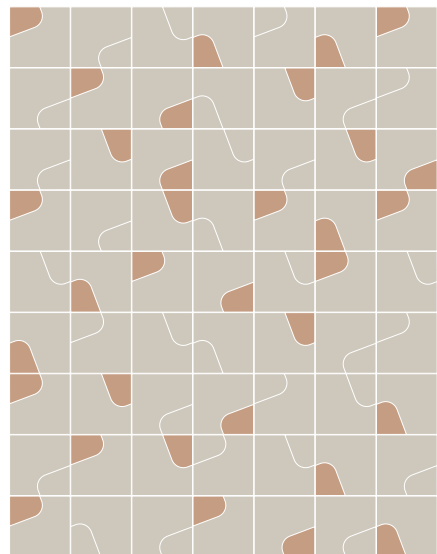
G Chalk Ochre (100%)



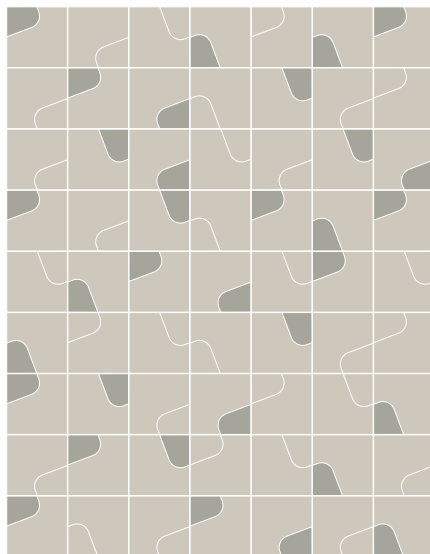
H Chalk Cameo (100%)



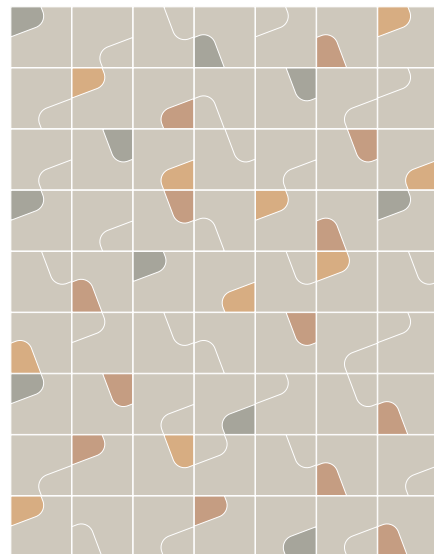
I Chalk Sugar Paper (100%)



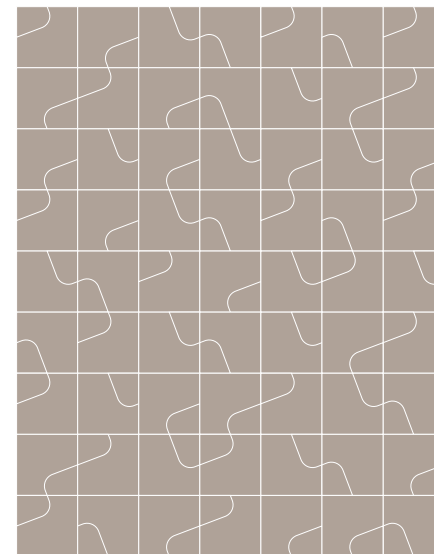
D Chalk (50%)
Chalk Cameo (50%)



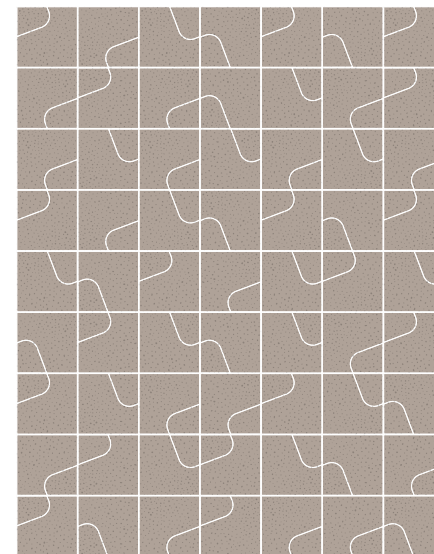
E Chalk (50%)
Chalk Sugar Paper (50%)



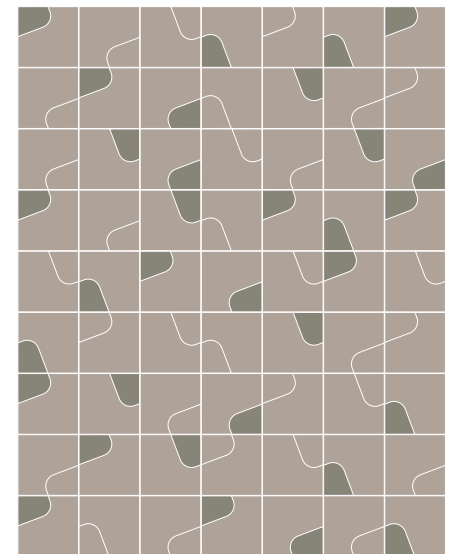
F Chalk (50%)
Chalk Ochre (16,66%)
Chalk Cameo (16,66%)
Chalk Sugar Paper (16,66%)



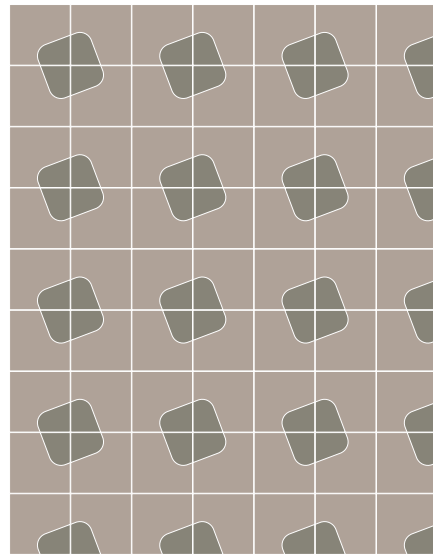
L Clay (100%)



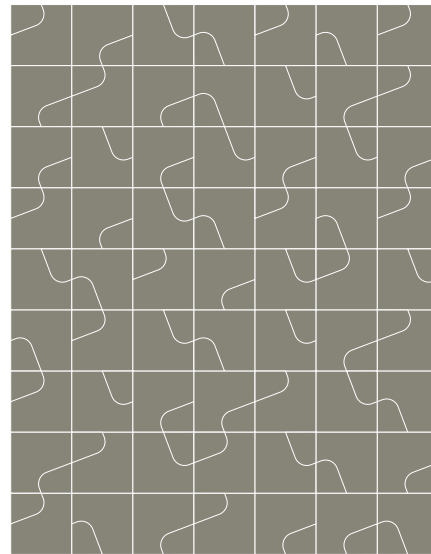
M Clay Raw (100%)



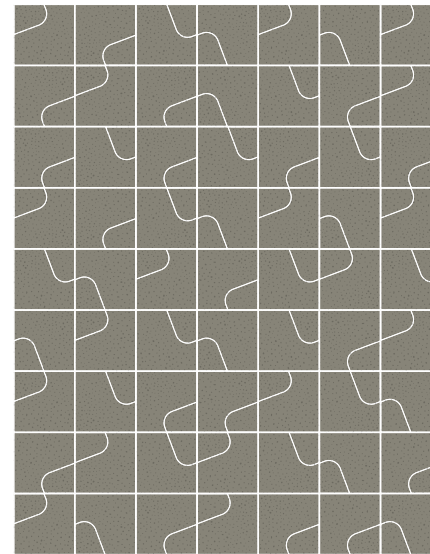
N Clay (50%)
Clay Mud (50%)



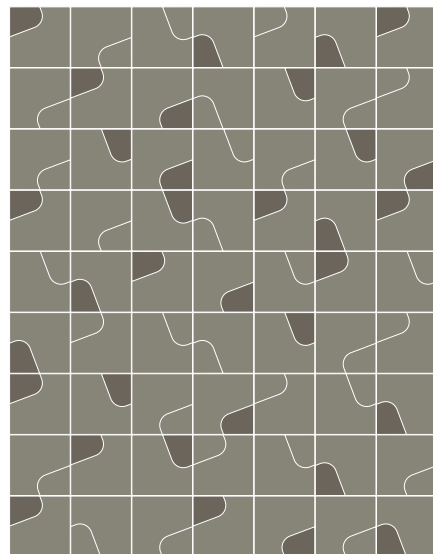
O Clay Mud (100%)



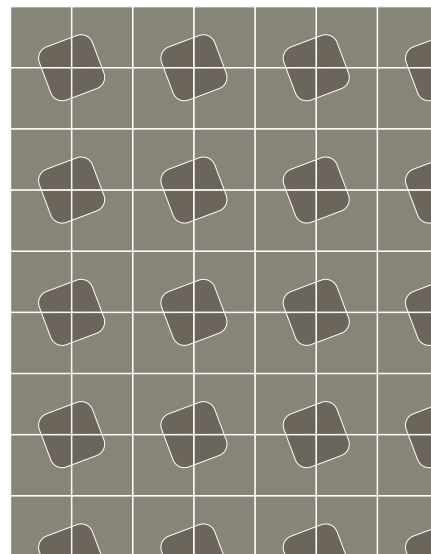
P Mud (100%)



Q Mud Raw (100%)



R Mud (50%)
Mud Slate (50%)



S Mud Slate (100%)

quilt.
Studio Irvine

MARIALAURA ROSSIELLO
STUDIO IRVINE



Studio Irvine è uno studio di design con sede a Milano gestito dall'architetto Marialaura Rossiello Irvine. Fondato nel 1988 dal designer britannico James Irvine (1958-2013), lo studio rimane fedele al suo approccio progettuale e al suo metodo in una combinazione di ironia e precisione.

Basato sull'idea di design ispirata dall'attenzione all'etica, al "fattore umano" e all'interazione personale, Marialaura Rossiello ha una visione in costante evoluzione, radicata nei classici della scuola di design italiana ma con una visione internazionale più ampia. Per alcuni anni ha collaborato con marchi di design italiani e si è abituata a considerare il prodotto nell'ambito di un processo aziendale globale. Nel 2011 è diventata partner dello Studio Irvine, dove i prodotti industriali sono stati il cuore pulsante del design.

Oggi il suo lavoro è distintamente interdisciplinare con una grande curiosità verso tutti i tipi e dimensioni di progetti di design: design di prodotti, interni e strategici, con clienti come Muji, Yamakawa, Thonet, Offecct, Amorim, Matteo Brioni, Baleri Italia e altri..

Studio Irvine is a design studio based in Milan and run by the architect Marialaura Rossiello Irvine. Founded in 1988 by British designer James Irvine (1958-2013), the studio remains faithful to his design approach and method in a combination of irony and precision.

Based on the idea of design inspired by attention to ethics, the 'human factor' and personal interaction, Marialaura Rossiello is instilled with a vision in constant evolution, rooted in the classics of the Italian design school but with a broader international outlook. For a number of years, she collaborated with Italian design brands, and grew accustomed to consider the product within a comprehensive corporate process. In 2011 she became partner of Studio Irvine, where industrial products were the throbbing heart of design.

Today her work is distinctively cross-disciplinary with a great curiosity towards all types and scales of design projects: product, interior and strategic design, with clients such as Muji, Yamakawa, Thonet, Offecct, Amorim, Matteo Brioni, Baleri Italia, and others.

marketing direction
Stefano Nencioni

creative direction
Massimo Nadalini

graphic design
Marketing Mosaico+
Punto Digital

photo
Punto Immagine

Con la stampa di questo catalogo abbiamo cercato di avvicinarci il più possibile alla realtà cromatica delle tessere dei mosaici; i campioni stampati hanno tuttavia valore solamente indicativo.

When printing this catalogue, every effort has been made to reproduce the real colors of the mosaic chips; however, printed samples are guideline only.

